



Free Questions for 75940X by dumpshq

Shared by Ayala on 24-05-2024

For More Free Questions and Preparation Resources

Check the Links on Last Page

Question 1

Question Type: MultipleChoice

An Avaya Orchestrator administrator is asked to check the CPU usage for the last 24 hours of one of the ESXi Hosts, as it has been performing erratically.

How can the administrator go about doing this?

Options:

- A- By clicking on the Compute Group's Service State line.
- B- By navigating to Quick View -- All Host Problems.
- C- By going to the Performance Graphs of the CPU Usage Service for the host.
- D- By selecting the VM Group's Service State line.

Answer:

A

Explanation:

Question 2

Question Type: MultipleChoice

Refer to the exhibit.

Slot	Device Description	Serial NO	IP Address	Protocols
32	<input type="text"/>	<input type="text"/>	<input type="text"/> IP Address <input type="button" value="+"/>	SNMP v2 <input type="button" value="v"/> Port <input type="text"/> Community string <input type="button" value="X"/> <input type="button" value="+"/>
31	<input type="text"/>	<input type="text"/>	<input type="text"/> IP Address <input type="button" value="+"/>	SNMP v2 <input type="button" value="v"/> Port <input type="text"/> Community string <input type="button" value="X"/> <input type="button" value="+"/>
30	<input type="text"/>	<input type="text"/>	<input type="text"/> IP Address <input type="button" value="+"/>	SNMP v2 <input type="button" value="v"/> Port <input type="text"/> Community string <input type="button" value="X"/> <input type="button" value="+"/>
29	<input type="text"/>	<input type="text"/>	<input type="text"/> IP Address <input type="button" value="+"/>	SNMP v2 <input type="button" value="v"/> Port <input type="text"/> Community string <input type="button" value="X"/> <input type="button" value="+"/>
28	<input type="text"/>	<input type="text"/>	<input type="text"/> IP Address <input type="button" value="+"/>	SNMP v2 <input type="button" value="v"/> Port <input type="text"/> Community string <input type="button" value="X"/> <input type="button" value="+"/>

An administrator is adding new equipment to the ACP 4200 in the Avaya Orchestrator Configuration Wizard. How do the Device Description and Serial Number fields get populated in the Avaya Orchestrator

Configuration Wizard?

Options:

- A- These are optional fields that do not need to be populated.
- B- These are automatically detected by clicking on the Detect Hardware button.
- C- These are manually entered by the administrator.
- D- These are imported from the ACP Configurator Tool Excel spreadsheet.

Answer:

C

Explanation:

<https://downloads.avaya.com/css/P8/documents/101061680> (50)

Question 3

Question Type: MultipleChoice

An administrator needs to access Avaya Orchestrator.

How does an administrator log into the management interface of Avaya Orchestrator?

Options:

- A-** By using a browser to login to System Manager, then clicking on the Avaya Orchestrator link.
- B-** By using a browser to login to Avaya Orchestrator's FQDN or IP address.
- C-** By downloading and using the System Manager Administrator client.
- D-** By downloading and using the Avaya Orchestrator Administrator client.

Answer:

B

Explanation:

<https://downloads.avaya.com/css/P8/documents/101061680>

Question 4

Question Type: MultipleChoice

How would an administrator display the IP addresses of the VSP switches of the ACP 4200 within the Avaya Orchestrator Home Dashboard?

Options:

- A-** By right-clicking on the Dashboard menu item and downloading the network summary report.
- B-** By right-clicking on the Admin menu item and downloading the network summary report.
- C-** By right-clicking on the Report menu item and downloading the network summary report.
- D-** By hovering the mouse pointer over the Up status indicator within the Network dashlet.

Answer:

B

Question 5

Question Type: MultipleChoice

Which two circumstances would require the Avaya Orchestrator ACP Configuration Wizard to be run in the field? (Choose two.)

Options:

- A- When a new G450 Gateway is added to the ACP.
- B- When a new configuration file for the ACP's VSP Switches is deployed.
- C- When a new Virtual Machine is added to the ACP.
- D- When a new ESXi Host is added to the ACP.

Answer:

B, D

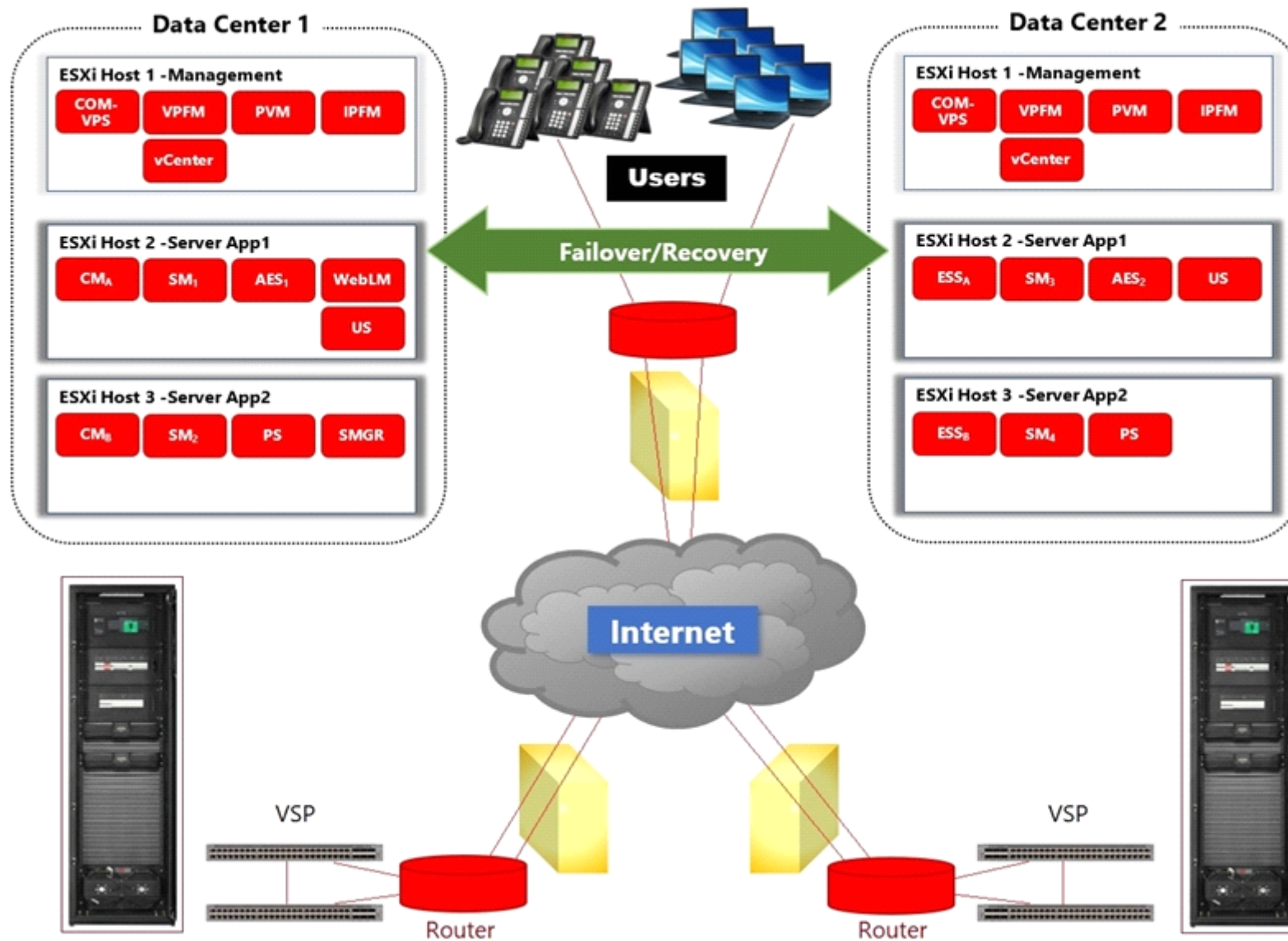
Explanation:

<https://downloads.avaya.com/css/P8/documents/101061680>

Question 6

Question Type: MultipleChoice

Refer to the exhibit.



In the deployment shown in the exhibit, how is High Availability achieved across the two Data Centers?

Options:

- A- By ensuring that the L2 VLANs are extended across to both Data Centers.
- B- By managing both Data Centers using the same vCenter Server and using vMotion and DRS.
- C- By using Virtualization Provisioning Service (VPS) to automate the provisioning of the network hardware and vSwitches across the two Data Centers.
- D- By using Avaya Aura Application High Availability features.

Answer:

C

Explanation:

<https://downloads.avaya.com/css/P8/documents/100182353>

Question 7

Question Type: MultipleChoice

With ACP 4200, what is mandatory to ensure Avaya Aura High Availability across the two Data Centers?

Options:

- A-** A single vCenter Server that manages both Data Centers.
- B-** Network connectivity to and in between the two Data Centers.
- C-** Identical compute servers in both Data Centers.
- D-** The same VLANs in both Data Centers.

Answer:

A

Explanation:

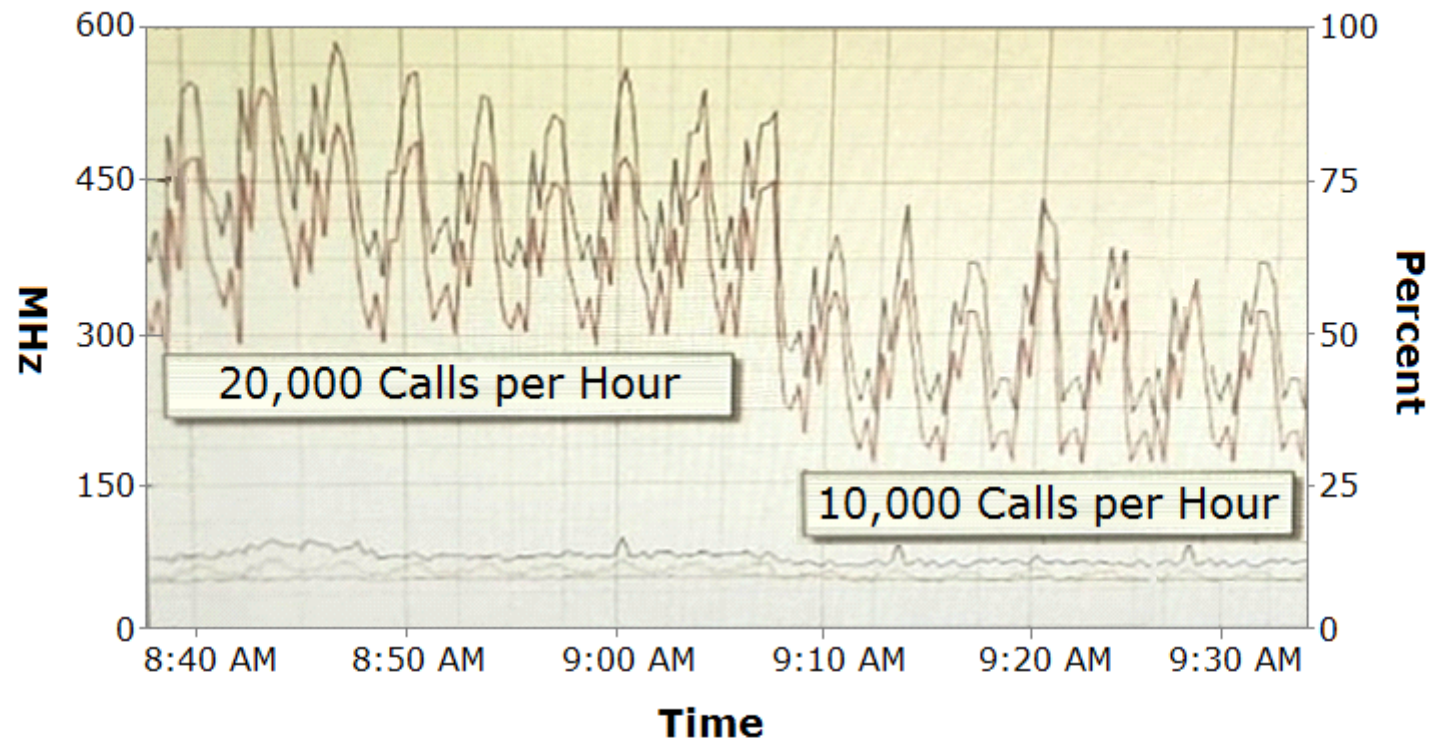
<https://downloads.avaya.com/css/P8/documents/101054952> (9)

Question 8






Question Type: MultipleChoice

Refer to the exhibit.

CPU/Real-time, 2/15/2013 8:37:49 AM - 2/15/2013 9:37:49 AM - cpodCM1



Performance Chart Legend

Key	Object	Measurement	Rollup	Units
	0	Usage in MHz	average	MHz
	1	Usage in MHz	average	MHz
	cpodCM1	Usage	average	Percent
	cpodCM1	Usage in MHz	average	MHz
	2	Usage in MHz	average	MHz

The CPU performance of Communication Manager (CM) shows a significant difference depending on the call rates.

Which statement about making configuration changes is true?

Options:

- A-** Increasing the number of Virtual CPUs allocated to CM might help to reduce this difference.
- B-** Ensuring that a secondary CM is available to allow for load-balancing might help to reduce this difference.
- C-** Migrating the CM Virtual Machine to another ESXi host that is less busy might help to reduce this difference.
- D-** Reducing this difference is not necessary because this is expected behavior.

Answer:

B

Question 9

Question Type: MultipleChoice

A new ESXi host has been added to the ACP 4200. However, unlike existing ESXi hosts within the ACP 4200, the new host cannot be monitored or detected by Avaya Orchestrator.

What is causing this problem?

Options:

- A- The new host has not been correctly configured to support vMotion.
- B- The new host has not been added to Avaya Orchestrator.
- C- The new host has not been licensed yet.
- D- The new host has not been configured for Auto Detection.

Answer:

B

Question 10

Question Type: MultipleChoice

Refer to the exhibit.

AVAYA Orchestrator

▼ Quick View

- Home Dashboard
- All Service Problems
- All Host Problems

▼ Details

- Service Status
- Host Status

▼ Graphs

- Graph Explorer

▼ Incident Management

- Latest Alerts
- Acknowledgements
- Scheduled Downtime
- Mass Acknowledge
- Recurring Downtime
- Notifications

An administrator navigates to the Avaya Orchestrator link shown in the exhibit. What would the Administrator be able to monitor here?

Options:

- A-** A list of Services with status of Warning or Critical.
- B-** A list of Services with status of OK.
- C-** A list of Services regardless of status.
- D-** A list of Services which have additional details.

Answer:

D

Explanation:

<https://downloads.avaya.com/css/P8/documents/101061680>

Question 11

Question Type: MultipleChoice

Refer to the exhibit.

	A	B	C	D	E	F	G	H	I
2	Build Code	Assembled Units	From Device RMU/Port	Connects to Unit	To Switch RMU/Port				
1452	2D E3/S/G/GS	Gateway - 1	E5	VSP4K1	P1	1 - P1	G4501 - E5	10	Gray
1454	2D E3/S/G/GS	VSP 4800 - 2	P3	VSP4K1	P3	1 - P3	4k2 - P3	10	Gray
1455	2D E3/S/G/GS	VSP 4800 - 2	P4	VSP4K1	P4	1 - P4	4k2 - P4	10	Gray
1456	2D E3/S/G/GS	VSP 4800 - 2	P5	VSP4K1	P5	1 - P5	4k2 - P5	10	Gray
1457	2D E3/S/G/GS	VSP 4800 - 2	P6	VSP4K1	P6	1 - P6	4k2 - P6	10	Gray
1458	2D E3/S/G/GS	VSP 4800 - 2	P7	VSP4K1	P7	1 - P7	4k2 - P7	10	Gray
1459	2D E3/S/G/GS	VSP 4800 - 2	P8	VSP4K1	P8	1 - P8	4k2 - P8	10	Gray
1460	2D E3/S/G/GS	VSP 4800 - 2	P6	VSP4K1	P9	1 - P9	4k2 - P9	10	Gray
1461	2D E3/S/G/GS	VSP 4800 - 2	P10	VSP4K1	P10	1 - P10	4k2 - P10	10	Gray
1462	2D E3/S/G/GS	Server ACR - 1	N2	VSP4K1	P18	1 - P18	SVR01 - N2	15	Gray
1463	2D E3/S/G/GS	Server ACR - 2	N2	VSP4K1	P19	1 - P19	SVR02 - N2	15	Gray
1469	2D E3/S/G/GS	Server ACR - 1	N0	VSP4K1	P26	1 - P26	SVR01 - N0	15	Black
1470	2D E3/S/G/GS	Server ACR - 2	N0	VSP4K1	P27	1 - P27	SVR02 - N0	15	Black
1476	2D E3/S/G/GS	Server ACR - 1	IMM	VSP4K1	P35	1 - P35	SVR01 - IMM	15	Black
1482	2D E3/S/G/GS	EMC Storage	SPA LAN	VSP4K1	P43	1 - P43	VNX - SPA LAN	15	Black
1485	2D E3/S/G/GS	EMC Storage	SPA P0	VSP4K1	P50	1 - P50	VNX - SPA P0	5M	Aqua
1486	2D E3/S/G/GS	Gateway - 1	E6	VSP4K2	P1	2 - P1	G4501 - E6	10	Gray
1488	2D E3/S/G/GS	VSP 4800 - 1	P3	VSP4K2	P3	2 - P3	4k1 - P3	10	Gray
1489	2D E3/S/G/GS	VSP 4800 - 1	P4	VSP4K2	P4	2 - P4	4k1 - P4	10	Gray
<div style="display: flex; justify-content: space-between; border: 1px solid black; padding: 2px;"> ◀ ▶ ... Switch Wiring Power Cord Wiring Serial Numbers Software Versions Licenses Calc Customer Questionnaire Network Data </div>									

An Administrator notices that a Service Status Warning is being received by Avaya Orchestrator indicating that port 27 on VSP 4850-1 is down.

Based on the contents of the Customer and Network Lifecycle Workbook in the exhibit, which equipment is connected to this port?

Options:

- A- VSP4K1, port 27
- B- Server/ACR-2, Interface NO
- C- Server/ACR-1, Interface NO
- D- VSP4K1, Port 26

Answer:

A

Question 12

Question Type: MultipleChoice

With ACP 4200, what is mandatory to ensure Avaya Aura High Availability across the two Data Centers?

Options:

- A-** A single vCenter Server that manages both Data Centers.
- B-** Network connectivity to and in between the two Data Centers.
- C-** Identical compute servers in both Data Centers.
- D-** The same VLANs in both Data Centers.

Answer:

A

Explanation:

<https://downloads.avaya.com/css/P8/documents/101054952> (9)

To Get Premium Files for 75940X Visit

<https://www.p2pexams.com/products/75940x>

For More Free Questions Visit

<https://www.p2pexams.com/avaya/pdf/75940x>

