



Free Questions for HPE6-A69 by certsCare

Shared by Barron on 24-05-2024

For More Free Questions and Preparation Resources

Check the Links on Last Page

Question 1

Question Type: MultipleChoice

Which statement is true about NAE scripts'?

Options:

- A- The System Resource Monitor is the only script Installed on the system by default.
- B- The System Resource Monitor and Health Monitor a/e the only scripts installed on the system by default
- C- No script is installed on the system by default.
- D- The Health Monitor is the only script installed on the system by default.

Answer:

A

Question 2

Question Type: MultipleChoice

Which MAC address is valid for use as a VSX System-MAC address?

Options:

A- AB:00:04:00:FF:00

B- 0A:00:00.00.00

C- FF:00:00:00:00:00

D- 01:00:5E40:10.01

Answer:

B

Question 3

Question Type: MultipleChoice

Which statement is true regarding remote mirroring?

Options:

- A- The same source/destination address can be used in multiple sessions.
- B- Per session multiple destination addresses can be configured
- C- The ArubaOS-CX switch supports a maximum of two mirroring sessions
- D- When mirroring destination is tunnel, a DSCP value can be set on the tunnel

Answer:

B

Question 4

Question Type: MultipleChoice

An administrator wants to create an ACL.

Permit traffic from 192.168.10, 65 through 192.168.10.94

Permit traffic from 192 168 10 104 through 192 16810.119

deny all other ip traffic

Which configuration is required to accomplish the administrator's goals?

A)

```
deny ip 192.168.10.95 255.255.255.255 any
deny ip 192.168.10.96 255.255.255.224 any
permit ip 192.168.10.104 255.255.255.248 any
permit ip 192.168.10.112 255.255.255.248 any
permit ip 192.168.10.64 255.255.255.192 any
```

B)

```
permit ip 192.168.10.104 255.255.255.248 any
permit ip 192.168.10.112 255.255.255.248 any
permit ip 192.168.10.64 255.255.255.192 any
deny ip 192.168.10.95 255.255.255.255 any
deny ip 192.168.10.96 255.255.255.224 any
```

C)

```
deny ip 192.168.10.95 255.255.255.255 any
permit ip 192.168.10.104 255.255.255.248 any
deny ip 192.168.10.96 255.255.255.224 any
permit ip 192.168.10.112 255.255.255.248 any
permit ip 192.168.10.64 255.255.255.192 any
```

D)

```
deny ip 192.168.10.95 255.255.255.255 any
permit ip 192.168.10.104 255.255.255.248 any
permit ip 192.168.10.112 255.255.255.248 any
deny ip 192.168.10.96 255.255.255.224 any
permit ip 192.168.10.64 255.255.255.192 any
```

Options:

A- Option A

B- Option B

C- Option C

D- Option D

Answer:

A

Question 5

Question Type: MultipleChoice

Refer to the exhibit.

```
switch(config)# qos trust cos
switch(config)# qos cos-map 1 local-priority 1
switch(config)# qos queue-profile Q1
switch(config-queue)# map queue 0 local-priority 0
switch(config-queue)# map queue 1 local-priority 1
switch(config-queue)# map queue 1 local-priority 2
switch(config-queue)# map queue 2 local-priority 3
switch(config-queue)# map queue 3 local-priority 4
switch(config-queue)# map queue 4 local-priority 5
switch(config-queue)# map queue 5 local-priority 6
switch(config-queue)# map queue 5 local-priority 7
switch(config-queue)# qos schedule-profile S1
switch(config-schedule)# drrr queue 0 weight 5
switch(config-schedule)# drrr queue 1 weight 10
switch(config-schedule)# drrr queue 2 weight 15
switch(config-schedule)# drrr queue 3 weight 20
switch(config-schedule)# drrr queue 4 weight 25
switch(config-schedule)# drrr queue 5 weight 50
switch(config-schedule)# apply qos queue-profile Q1 schedule-profile S1
```

Which statement is true?

Options:

- A-** Q1 and S1 are applied to all interfaces that do not have a QoS override applied
- B-** To be effective, both Q1 and S1 still need to be applied to interfaces
- C-** No default queues are changed
- D-** Q1 and S1 are applied to all interfaces.

Answer:

C

Question 6

Question Type: DragDrop

Match the BGP path selection criteria attributes (Each option may be used once, more than once, or not at all)

	Answer Area	Attributes	Path
AS path length			First/Highest priority
MED			Second priority
Answer: Weight			Third priority
Local Preference			Fourth/Lowest priority

Question 7

Question Type: MultipleChoice

Which statement is true regarding IP-SLA?

Options:

- A- ArubaOS-CX supports Doth SLA configuration through CU and by agents through the NAE.
- B- ArubaOS-CX supports forever tests
- C- ArubaOS-CX supports on-demand as well as forever tests.
- D- The default and minimum probe interval for voip SLA is 180 seconds

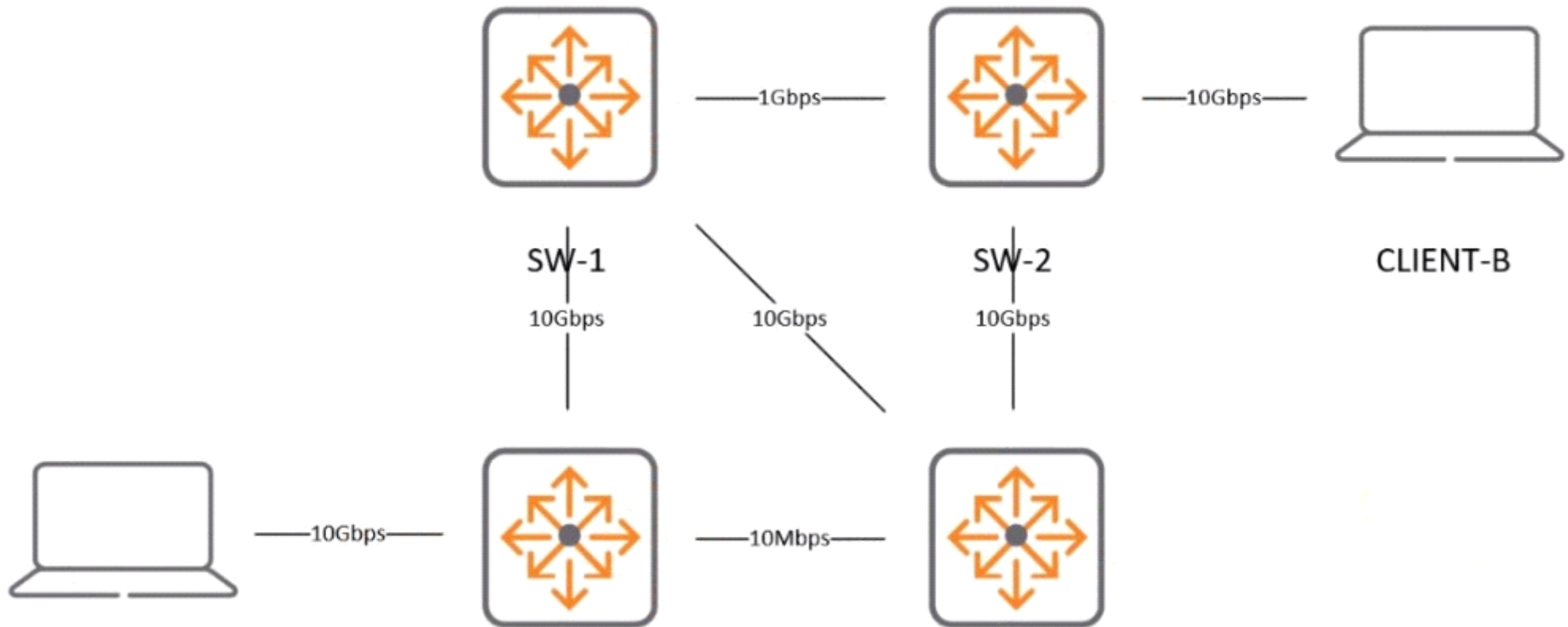
Answer:

B

Question 8

Question Type: MultipleChoice

A customer would like to utilize some ArubaOS-CX 6300M switches to perform OSPF routing.



All ports are routed, and ECMP is enabled, with other default parameters for OSPF. What will be the result of traffic sent from CLIENT-A to CUENT-B?

Options:

A- Traffic will be SW3 -> SW-4 -> SW-2.

- B- Traffic will be SW3 -> SW-1 -> sw-2.
- C- Traffic will be SW3 -> SW-1 -> sw-4 -> SW-2
- D- Traffic will be SW3 -> SW-1 -> Sw-2 & SW3 -> SW-4 -> SW-2

Answer:

C

Question 9

Question Type: DragDrop

Match the reported status to the Aruba 8325 issue (Each option may Be used once more than once, or not at all)

Answer Area	
STATUS	ISSUE
<input type="text"/>	Move the 1GBase-T transceiver to a supported port.
<input type="text"/>	Define the correct interface-group speed setting.
<input type="text"/>	Replace the unsupported Aruba transceiver with a supported revision.

Unknown interface
Incompatible interface
Group speed mismatch

Question 10

Question Type: MultipleChoice

An administrator has identified a denial of service attack that is stressing the management processor on the switch. Which actions can be applied to CoPP to mitigate the issue? (Select two.)

Options:

- A- Set the processing priority
- B- Create a policy that matches the payload of GRE traffic.
- C- Regulate traffic from the OOBM Ethernet port
- D- Apply multiple active polices for the classes of traffic

Answer:

C, D

Question 11

Question Type: MultipleChoice

An administrator is utilizing the orchestration capabilities of NetEdit. What are the two plan types that can be created" (Select two.)

Configuration management plan

Options:

A- Firmware plan

B- Firmware plan

C- Deployment plan

D- Configuration plan

Answer:

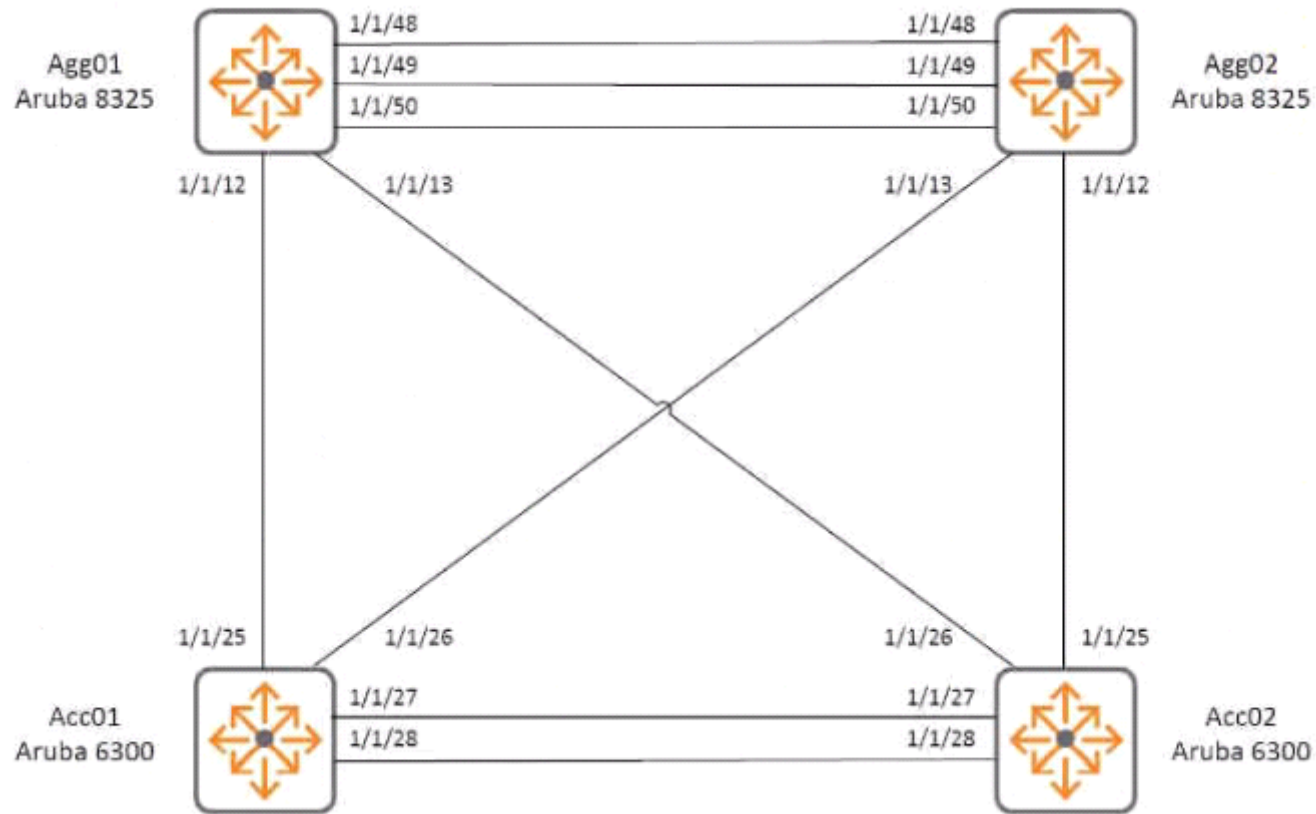
A, B

Question 12

Question Type: MultipleChoice

(Scenarios may contain multiple errors which may or may not impact the solution)

Refer to the Exhibit.



An engineer has attempted to configure two pairs of switches in the referenced configuration. It is required to implement

Multi-Chassis Link Aggregation for each pair of switches.

The ports of the Aruba 8325 switches used for Agg01 and Agg02 are populated as follows:

1/1/12 10G SFP+ LC SR 300m MMF Transceiver
1/1/13 10G SFP+ LC SR 300m MMF Transceiver
1/1/48 1GBaseT 100m Cat5e Transceiver
1/1/49 40G QSFP+ 15m Active Optical Cable
1/1/50 40G QSFP+ 15m Active Optical Cable

The configuration includes:

```
!  
!Version ArubaOS-CX GL.10.04.2000  
!export-password: default  
hostname Agg01  
profile L3-agg  
no usb  
vrf KA  
ntp server 10.77.77.77  
ntp vrf mgmt  
interface mgmt  
    no shutdown  
    ip static 10.177.177.70/24  
    default-gateway 10.177.177.128  
system interface-group 2 speed 10g  
system interface-group 4 speed 10g  
interface lag 1  
    no shutdown  
    no routing  
    vlan trunk native 1  
    vlan trunk allowed 700-701  
    lacp mode active  
interface lag 2  
interface 1/1/50  
    no shutdown  
    mtu 9198  
    lag 256  
vsx  
    system-mac 02:01:00:00:20:00  
    inter-switch-link lag 256  
    role primary  
    keepalive peer 192.168.20.2 source 192.168.20.1 vrf KA  
    linkup-delay-timer 600  
    vsx-sync aaa acl-log-timer bfd-global bgp copp-policy dhcp-relay dhcp-server dhcp-  
snooping dns icmp-tcp lldp loop-protect-global mac-lockout mclag-interfaces neighbor ospf  
qos-global route-map sflow-global snmp  
ssh stp-global time vsx-global  
ip dns server-address 10.25.110.250 vrf mgmt  
https-server rest access-mode read-write  
https-server vrf mgmt
```


There is an error message stating "mismatched group speed" What should you add to the configuration to correct the error?

Options:

- A- 'system Interface-group 1 speed 10g'
- B- 'allow-unsupported-transceiver'
- C- 'speed 10-full' under interfaces 1/1/12 and 1/1/13
- D- 'speed 40-full' under interfaces 1/1/49 and 1/1/50

Answer:

C

To Get Premium Files for HPE6-A69 Visit

<https://www.p2pexams.com/products/hpe6-a69>

For More Free Questions Visit

<https://www.p2pexams.com/hp/pdf/hpe6-a69>

