



**Free Questions for 300-515 by dumpshq**

**Shared by Davidson on 22-07-2024**

**For More Free Questions and Preparation Resources**

**Check the Links on Last Page**

# Question 1

---

**Question Type:** MultipleChoice

---

An engineer is investigating an MPLS LDP issue. Which command should an engineer use on a Cisco IOS XE device to display the contents of the LFIB?

## Options:

---

- A- show mpls forwarding-table
- B- show mpls ldp neighbors
- C- show mpls ldp labels
- D- show mpls ldp bindings

## Answer:

---

A

## Explanation:

---

<https://www.cisco.com/c/en/us/td/docs/ios-xml/ios/mpls/command/mp-cr-book/mp-s2.html>

## Question 2

---

**Question Type:** MultipleChoice

---

An engineer is investigating an EVPN traffic flow issue. Which type of traffic should the engineer allow in an EVPN Tree Service in order to fix this issue?

### Options:

---

- A- known unicast from a leaf to another leaf
- B- unknown unicast from a leaf to another leaf
- C- multicast from a leaf to another leaf
- D- known unicast from a root to another root

### Answer:

---

D

### Explanation:

---

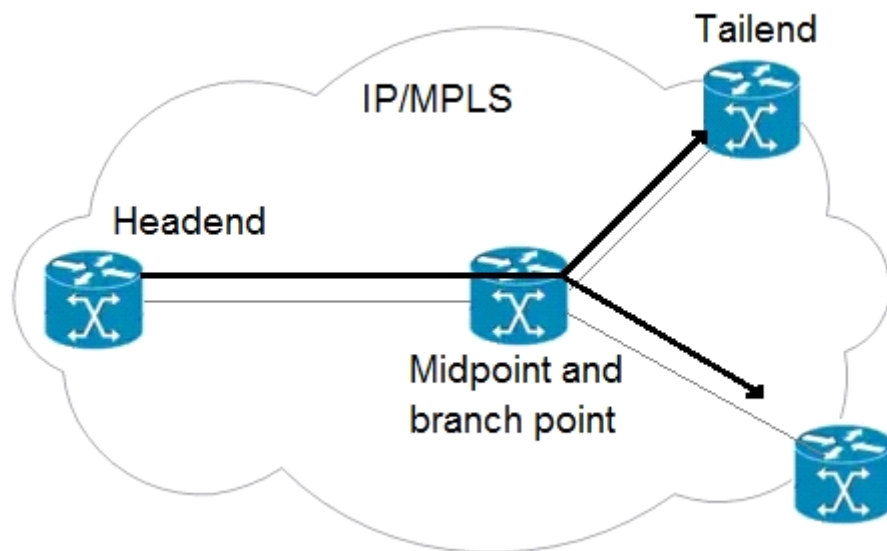
## Question 3

---

**Question Type:** MultipleChoice

---

Refer to the exhibit.



An engineer is implementing an MPLS P2MP TE solution. Which type of router can serve as the midpoint router and the tailend router in this P2MP TE network implementation?

**Options:**

---

A- headend

B- source

C- transit

D- bud

**Answer:**

---

D

**Explanation:**

---

[https://www.cisco.com/c/en/us/td/docs/routers/asr920/configuration/guide/mps/mp-te-path-setup-xe-3s-asr920-book/mp-te-path-setup-xe-3s-asr920-book\\_chapter\\_01.html](https://www.cisco.com/c/en/us/td/docs/routers/asr920/configuration/guide/mps/mp-te-path-setup-xe-3s-asr920-book/mp-te-path-setup-xe-3s-asr920-book_chapter_01.html)

## Question 4

---

**Question Type:** MultipleChoice

---

In an Ethernet Virtual Circuit environment, which restriction do bridge domains have when STP is running?

**Options:**

---

- A- The STP mode must be RSTP or PVST+
- B- Bridge domains must be mapped to a different VLAN.
- C- The STP mode must be MSTP
- D- Bridge domains must belong to different MST instances.

**Answer:**

---

C

**Explanation:**

---

[https://www.cisco.com/c/en/us/td/docs/routers/asr920/configuration/guide/ce/b\\_ce\\_xe-313s-asr920-book/b\\_ce\\_xe-313s-asr920-book\\_chapter\\_01.html#reference\\_770349446ED24E83821EF701DDC46BFD](https://www.cisco.com/c/en/us/td/docs/routers/asr920/configuration/guide/ce/b_ce_xe-313s-asr920-book/b_ce_xe-313s-asr920-book_chapter_01.html#reference_770349446ED24E83821EF701DDC46BFD)

## Question 5

---

**Question Type: MultipleChoice**

---

Which two frames can be configured on an Ethernet flow point? (Choose two.)

**Options:**

---

- A- of a specific VLAN
- B- with different type of service values
- C- with identical type of service value
- D- with different class of service values
- E- with no tags

**Answer:**

---

A, E

**Explanation:**

---

<https://www.cisco.com/c/en/us/td/docs/ios-xml/ios/cether/configuration/xe-3s/asr903/16-5-1/b-ce-xe-16-5-asr900/trunk-efp-support.html>

## Question 6

---

Question Type: MultipleChoice

---

Refer to the exhibit.

<pre>PE1 ip vrf celvpn   rd 111:1   route-target export 111:1   route-target import 222:2  interface FastEthernet0/0/0   ip vrf forwarding celvpn   ip address 192.168.0.1 255.255.255.0  router ospf 1 vrf celvpn   network 192.168.0.0 0.0.0.255 area 1</pre>	<pre>CE1 interface FastEthernet0/0/0   ip address 192.168.0.2 255.255.255.0  interface FastEthernet0/0/1   ip address 192.168.1.2   255.255.255.252  router ospf 100   network 192.168.0.0 0.0.0.255 area1  router bgp 65600   neighbor 192.168.1.1 remote-as 65600</pre>
---	---

If the two devices are operating normally, which two conclusions can you draw from this configuration? (Choose two.)

Options:

---



- A- CE1 must use OSPF to establish a neighbor relationship with PE1.
- B- PE1 labels the routes it learns from CE1 with the route-target 222:2 and shares them with its VPNv4 peers.
- C- PE1 labels the routes it learns from CE1 with the route-target 111:1 and shares them with its VPNv4 peers.
- D- The PE-CE routes between the devices are being exchanged by OSPF
- E- CE1 is supporting CSC.

**Answer:**

---

A, D

## Question 7

---

**Question Type:** MultipleChoice

---

Refer to the exhibit.

<pre> PE1 ip vrf CE1  rd 101:1  route-target export 100:1  route-target import 200:2 </pre>	<pre> PE2 ip vrf CE2  rd 202:2  route-target export 200:2  route-target import 100:1 </pre>
<pre> PE3 ip vrf CE3  rd 303:3  route-target export 300:3  route-target import 400:4 </pre>	<pre> PE4 ip vrf CE4  rd 404:4  route-target export 400:4  route-target import 300:3 </pre>

A network engineer has been called to configure the four PE devices in order to enable full communication among the four CE devices connected to them. While starting to configure, he experienced a connectivity issue. Which two tasks should the engineer perform in order to begin the process correctly? (Choose two.)

### Options:

---

- A-** Configure PE3 to export route-targets 100:1 and 200:2.
- B-** Configure PE3 to import route-targets 100:1 and 200:2.
- C-** Configure PE4 to import route-targets 101:1 and 202:2.
- D-** Configure PE2 to export route-targets 300:3 and 400:4.
- E-** Configure PE1 to import route-targets 300:3 and 400:4.

**Answer:**

---

A, B

## Question 8

---

**Question Type:** MultipleChoice

---

Which two statements describe primary differences between MPLS Layer 2 and Layer 3 VPNs? (Choose two.)

**Options:**

---

- A-** Layer 2 VPNs use IPsec tunneling, but Layer 3 VPNs use L2TPv3 tunneling.
- B-** Layer 2 VPNs use AToM, but Layer 3 VPNs use MPLS/BGP.
- C-** Layer 2 VPNs use BGP, but Layer 3 VPNs use VPLS.
- D-** Layer 2 VPNs use L2TPv3 tunneling, but Layer 3 VPNs use GRE tunneling.
- E-** Layer 2 VPNs use IPsec tunneling, but Layer 3 VPNs use pseudowires to provide tunneling.

**Answer:**

---

B, D

## Question 9

---

**Question Type:** MultipleChoice

---

What is the primary function of a VRF on a router?

### Options:

---

- A-** It enables the router to support multiple separate routing tables, which allows the device to handle overlapping IP addresses.
- B-** It enables a router to run BGP and a distance vector routing protocol at the same time, which allows it to serve as a VPN endpoint between remote sites.
- C-** It enables a router to configure VLANs locally, which provides segregation between networks.
- D-** It enables the router to provide faster switching through the network by using labels to identify the input and output interfaces for neighbor routers.

### Answer:

---

A

## Question 10

---

**Question Type: MultipleChoice**

---

Which utility can you use to validate an LSP in an MPLS environment?

**Options:**

---

A- uRPF

B- MPLS LSP ping

C- logging

D- RSVP

**Answer:**

---

B

## Question 11

---

**Question Type: MultipleChoice**

---

Which two frames can be configured on an Ethernet flow point? (Choose two.)

### Options:

---

- A- of a specific VLAN
- B- with different type of service values
- C- with identical type of service value
- D- with different class of service values
- E- with no tags

### Answer:

---

A, E

### Explanation:

---

<https://www.cisco.com/c/en/us/td/docs/ios-xml/ios/cether/configuration/xe-3s/asr903/16-5-1/b-ce-xe-16-5-asr900/trunk-efp-support.html>

## Question 12

---

**Question Type:** MultipleChoice

---

An engineer is investigating an EVPN traffic flow issue. Which type of traffic should the engineer allow in an EVPN Tree Service in order to fix this issue?

**Options:**

---

- A- known unicast from a leaf to another leaf
- B- unknown unicast from a leaf to another leaf
- C- multicast from a leaf to another leaf
- D- known unicast from a root to another root

**Answer:**

---

D

**Explanation:**

---

<https://tools.ietf.org/html/draft-ietf-bess-evpn-etree-14>

**To Get Premium Files for 300-515 Visit**

**<https://www.p2pexams.com/products/300-515>**

**For More Free Questions Visit**

**<https://www.p2pexams.com/cisco/pdf/300-515>**

