



Free Questions for 300-630 by certscare

Shared by Sampson on 24-05-2024

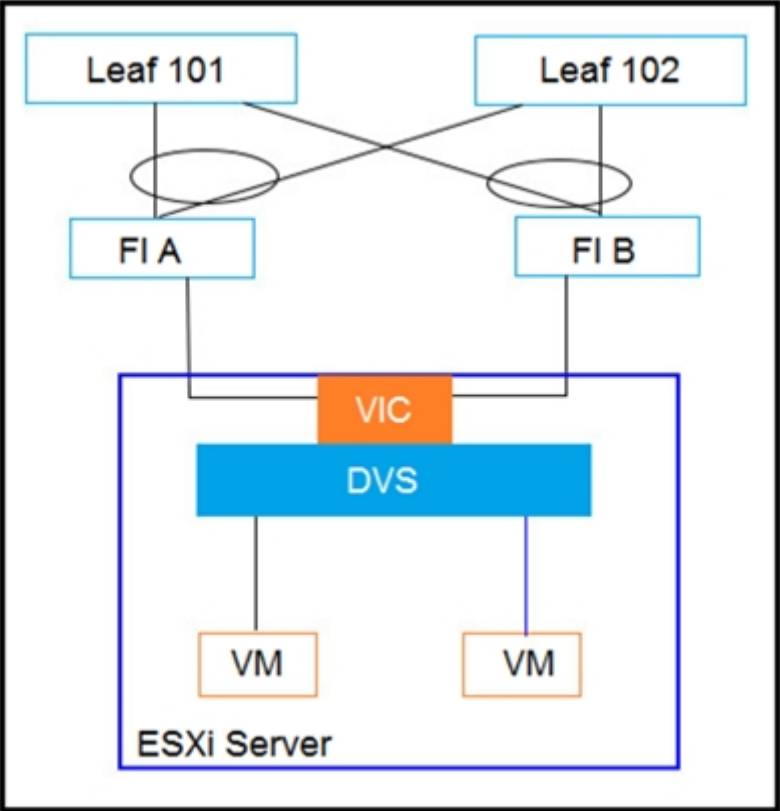
For More Free Questions and Preparation Resources

Check the Links on Last Page

Question 1

Question Type: MultipleChoice

Refer to the exhibit.



Between Cisco UCS FIs and Cisco ACI leaf switches, CDP is disabled, the LLDP is enabled, and LACP is in Active mode. Which two discovery protocols and load-balancing mechanism combinations can be implemented for the DVS? (Choose two.)

Options:

- A-** CDP enabled, LLDP disabled, and LACP Active
- B-** CDP disabled, LLDP enabled, and MAC Pinning
- C-** CDP enabled, LLDP disabled, and MAC Pinning
- D-** CDP enabled, LLDP enabled, and LACP Active
- E-** CDP enabled, LLDP disabled, and LACP Passive
- F-** CDP disabled, LLDP enabled, and LACP Passive

Answer:

B, E

Question 2

Question Type: DragDrop

Drag and drop the tenant implementation designs from the left onto the outcomes of the design when a greenfield Cisco ACI fabric is deployed on the right.

Answer Area

Answer:
VRF configured in common tenant; BDs and EPGs configured in dedicated tenants.

One organization without RBAC requirements owns all of the configuration.

Question 3
VRF and BDs configured in common tenant; EPGs configured in user tenants.

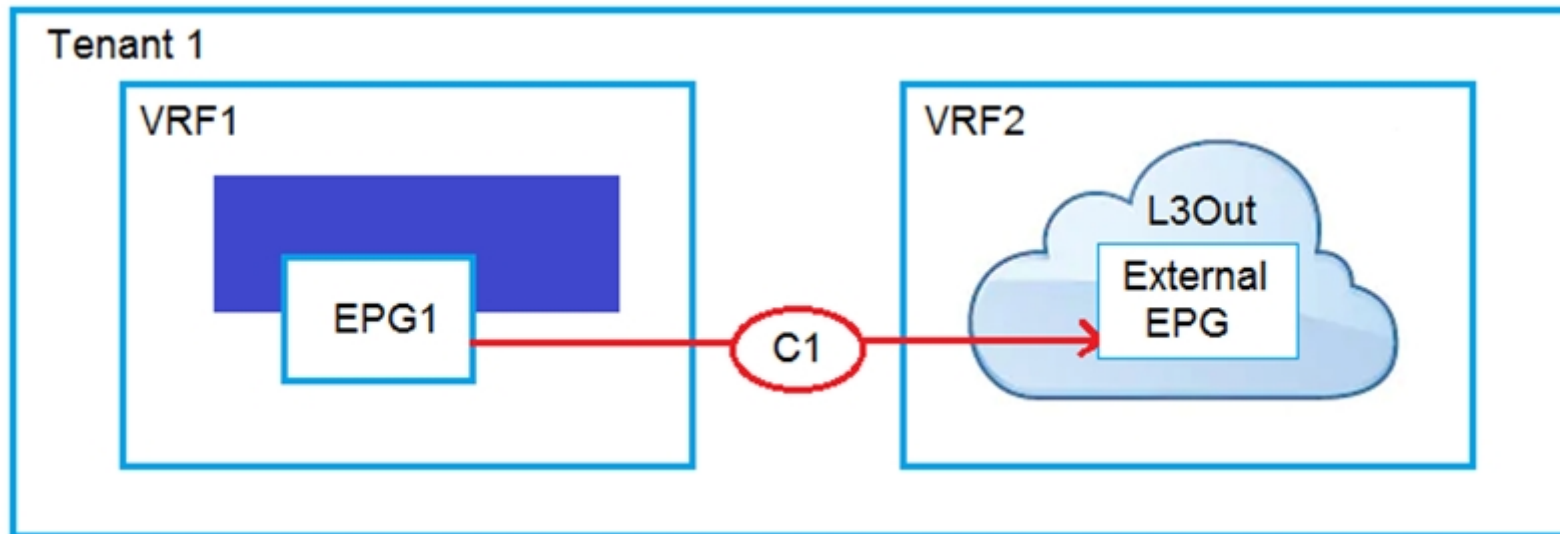
Different organizations can have overlapping subnets.

Question Type: MultipleChoice
VRF, BD, and EPG configured in common tenant.
Refer to the exhibit.

Organizations use different tenants and share the same subnets.

VRF, BD, and EPG configured in user tenants.

Each organization has access only to dedicated resources, tied into RBAC rules.



An engineer must have communication between EPG1 in VRF1 and External EPG in VRF2. Which three actions should be taken for the defined subnets in the L3Out External EPG to accomplish this goal? (Choose three.)

Options:

- A- Enable Shared Route Control Subnet
- B- Enable External Subnets for External EPG
- C- Enable Export Route Control Subnet
- D- Enable Shared Security Import Subnet
- E- Enable Aggregate Shared Routes

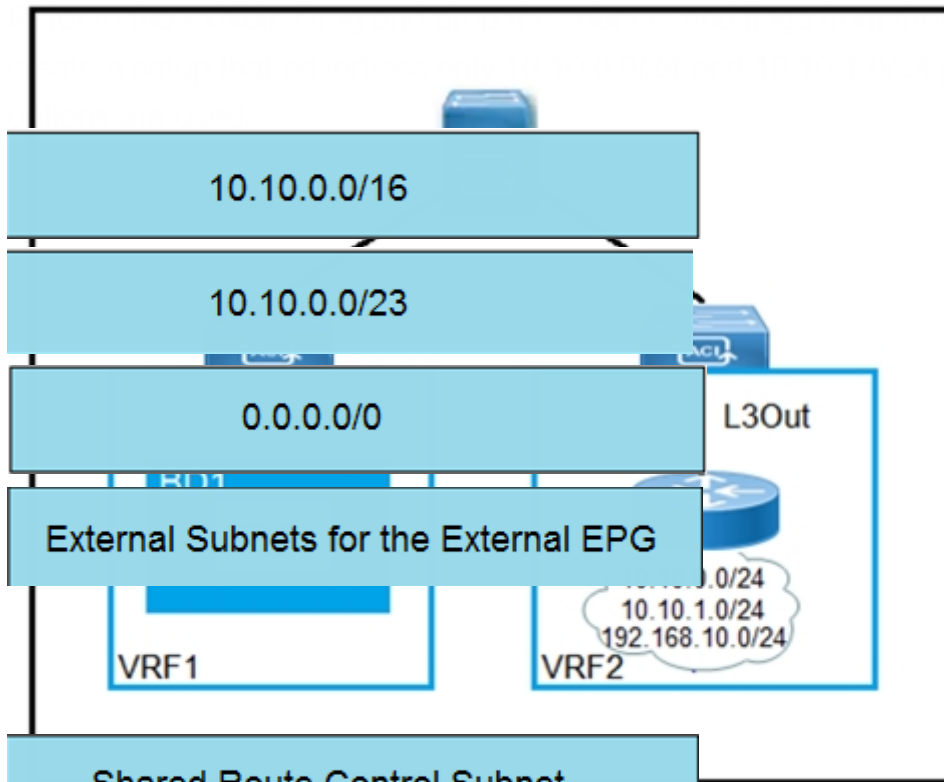
F- Enable Import Route Control Subnet

Answer:

C, D, F

Question 4

Question Type: DragDrop



t into the External Network Instance Profile policies on the right to
 fixes in VRF1 and establishes connectivity between VRFs. Not all

- Shared Route Control Subnet
- Import Route Control Subnet
- Shared Security Import Subnet
- Aggregate Export
- Aggregate Import
- Aggregate Shared

Answer Area

Answer:

10.10.0.0/16

10.10.0.0/23

IP Address

IP Address

Question 5

Question Type: Multiple Choice

Scope

Scope 1

Scope 2

Scope 3

When configuring External Subnets for the External EPGs stretched to establish intra-VRF communication between two EPGs that are deployed in different sites and different bridge domains? (Choose two.)

Export Route Control Subnet

Options:
A- contract

B- tenant
Import Route Control Subnet

C- application profile

D- bridge domain
Shared Security Import Subnet

E- EPG

Aggregate Export

Aggregate Import

Aggregate Shared

Aggregate

Aggregate

Answer:

D, E

Question 6

Question Type: MultipleChoice

Which two actions should be taken to ensure a scalable solution when multiple EPGs in a VRF require unrestricted communication?
(Choose two.)

Options:

- A-** Configure a taboo contract between the EPGs that require unrestricted communication between each other.
- B-** Enable Preferred Group Member under the EPG Collection for VRF section.
- C-** Set the VRF policy control enforcement preference to Unenforced.
- D-** Set the EPGs that require unrestricted communication between each other as preferred group members.
- E-** Set the EPGs that require policy enforcement between each other as preferred group members.

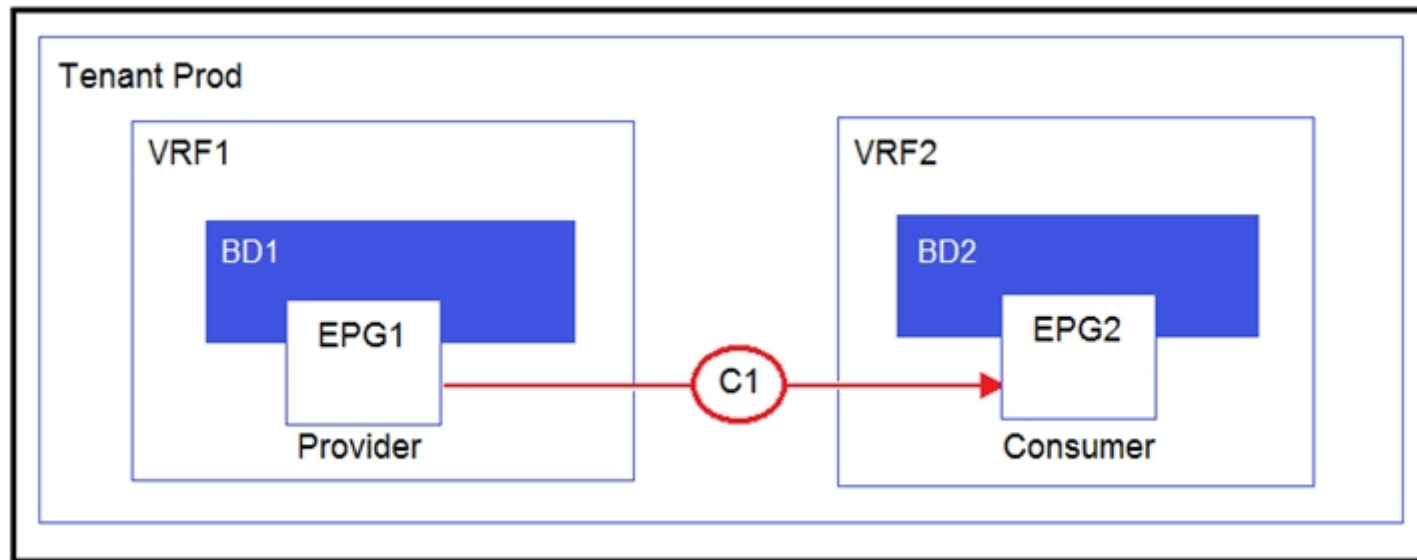
Answer:

C, D

Question 7

Question Type: MultipleChoice

Refer to the exhibit.



Which two configurations enable inter-VRF communication? (Choose two.)

Options:

- A- Set the subnet scope to Shared Between VRFs
- B- Enable Advertise Externally under the subnet scope
- C- Change the contract scope to Tenant
- D- Change the subject scope to VRF
- E- Export the contract and import as a contract interface

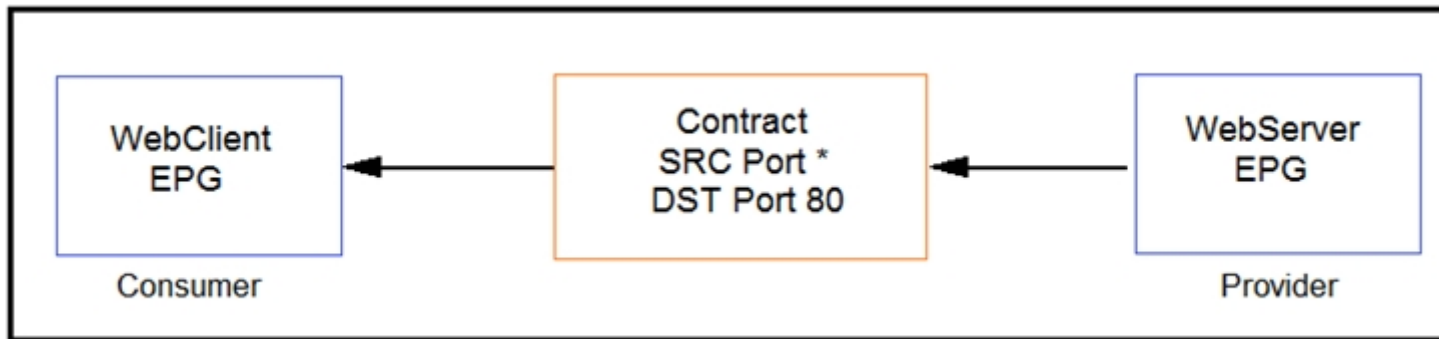
Answer:

B, E

Question 8

Question Type: MultipleChoice

Refer to the exhibit.



Which combination of flags in the Cisco ACI contract allows a client in WebClient EPG to establish an HTTP connection toward a server in WebServer EPG?

Options:

- A- Apply Both Direction ENABLED and Reverse Port Filter ENABLED
- B- Apply Both Direction DISABLED and Reverse Port Filter DISABLED
- C- Apply Both Direction DISABLED and Reverse Port Filter ENABLED
- D- Apply Both Direction ENABLED and Reverse Port Filter DISABLED

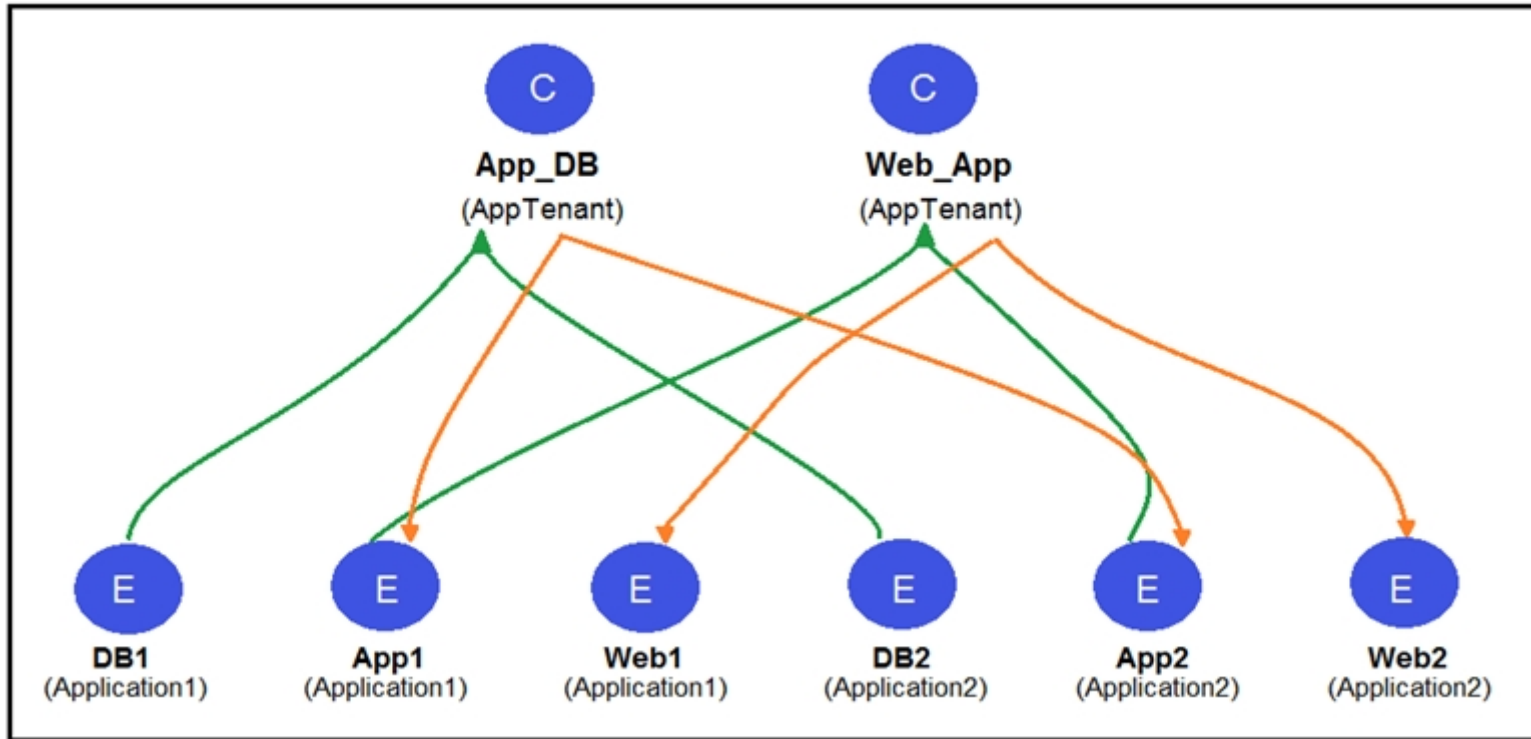
Answer:

C

Question 9

Question Type: MultipleChoice

Refer to the exhibit.



Two application profiles are configured in the same tenant and different VRFs. Which contract scope is configured to allow communication between the two application profiles?

Options:

A- global

B- VRF

C- application

D- tenant

Answer:

D

Question 10

Question Type: MultipleChoice

Refer to the exhibits.

Filter - SSH

[Policy](#) [Faults](#) [History](#)

Properties

Name: SSH

Alias:

Description: optional

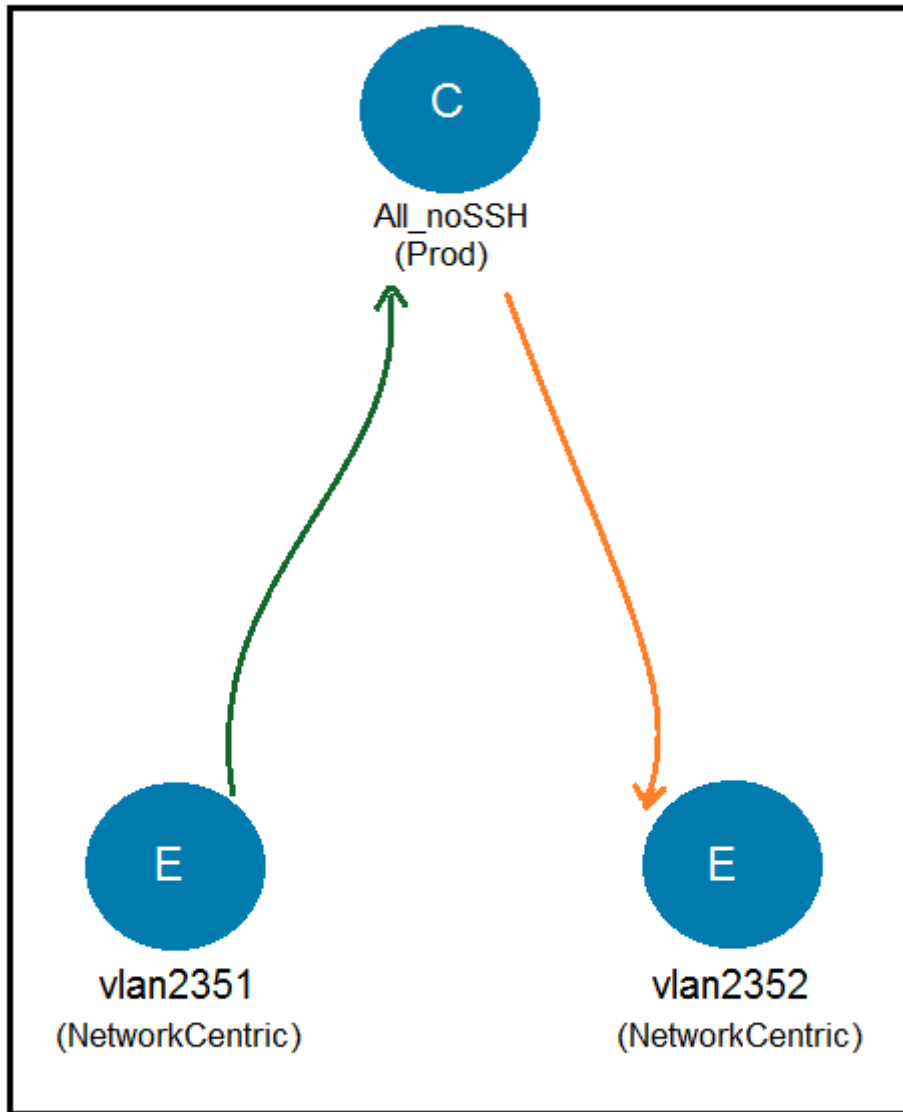
Tags:

enter tags separated by comma

Global Alias:

Entries:

Name	Alias	EtherType	ARP Flag	IP Protocol	Match Only Fragme	Stateful	Source Port/Range		Destination Port/Range	
							From	To	From	To
ssh		IP		tcp	False	False	unspecified	unspecified	22	22



Which subject must be configured for the All_noSSH contract to allow all IP traffic except SSH between the two EPGs?

A.

Apply Both Directions: false
Reverse Filter Ports:

Filters:

Name	Action	Priority
common/ip	permit	default level
Prod/SSH	Deny	highest priority

B.

Apply Both Directions: false
Reverse Filter Ports:

Filters:

Name	Action	Priority
common/ip	permit	default level
Prod/SSH	Deny	lowest priority

C.

Apply Both Directions: true
Reverse Filter Ports:

Filters: [Redacted]

Name	Tenant	Action	Priority
SSH	Prod	Deny	highest priority
ip	common	permit	default level

D.

Apply Both Directions: true
Reverse Filter Ports:

Filters: [Redacted]

Name	Tenant	Action	Priority
SSH	Prod	Deny	lowest priority
ip	common	permit	default level

Options:

A- Option A

B- Option B

C- Option C

D- Option D

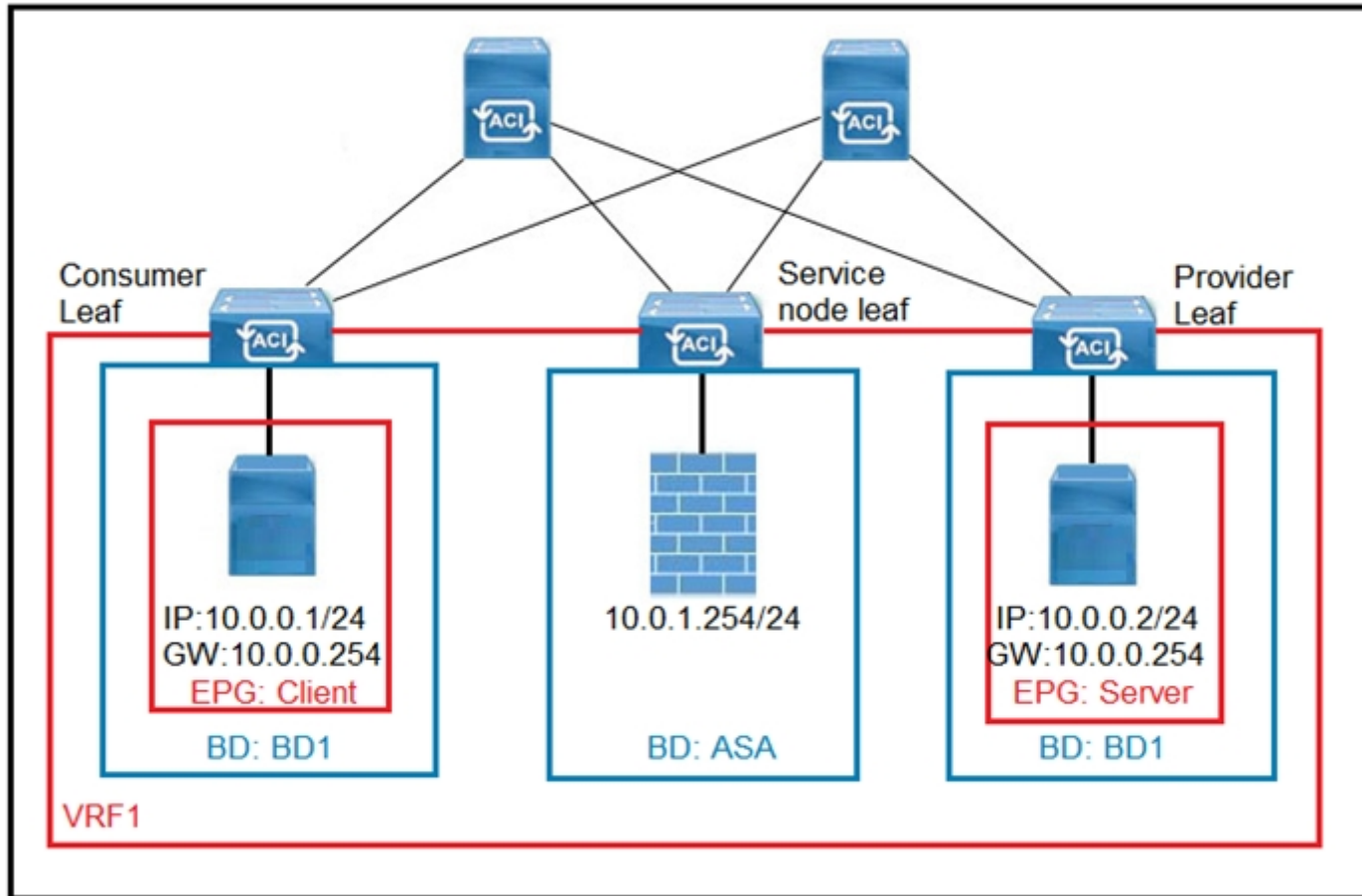
Answer:

D

Question 11

Question Type: MultipleChoice

Refer to the exhibit.



What must be configured in the service graph to redirect HTTP traffic between the EPG client and EPG server to go through the Cisco ASA firewall?

Options:

- A- contract filter to allow ARP and HTTP
- B- precise filter to allow only HTTP traffic
- C- contract with no filter
- D- permit-all contract filter

Answer:

A

To Get Premium Files for 300-630 Visit

<https://www.p2pexams.com/products/300-630>

For More Free Questions Visit

<https://www.p2pexams.com/cisco/pdf/300-630>

