



**Free Questions for 300-820 by [braindumpscollection](#)**

**Shared by Bass on 22-07-2024**

**For More Free Questions and Preparation Resources**

**[Check the Links on Last Page](#)**

## Question 1

---

**Question Type:** MultipleChoice

---

Which two licenses are required for the B2B feature to work? (Choose two.)

### Options:

---

- A- Traversal Server
- B- TURN Relays
- C- Rich Media Sessions
- D- Advanced Networking
- E- Device Provisioning

### Answer:

---

A, C

## Question 2

---

**Question Type:** MultipleChoice

---

Which step is required when configuring cloud and hybrid deployments for Cisco Jabber?

**Options:**

---

- A- Add the Jabber user to Cisco Unity Connection.
- B- Add the Jabber user to Expressway-E.
- C- Add the Jabber user to Expressway-C.
- D- Add Jabber Users to the Cisco Webex Administration Tool.

**Answer:**

---

D

## Question 3

---

**Question Type:** MultipleChoice

---

Refer to the exhibit.

`(\d{3}) (\d{3}) (\d{3}) (\d{3})`

Which two numbers match the regular expression? (Choose two.)

**Options:**

---

A- d20d16d20d22

B- 2091652010224

C- 209165200225

D- d209d165d200d224

E- 209165200224

**Answer:**

---

C, E

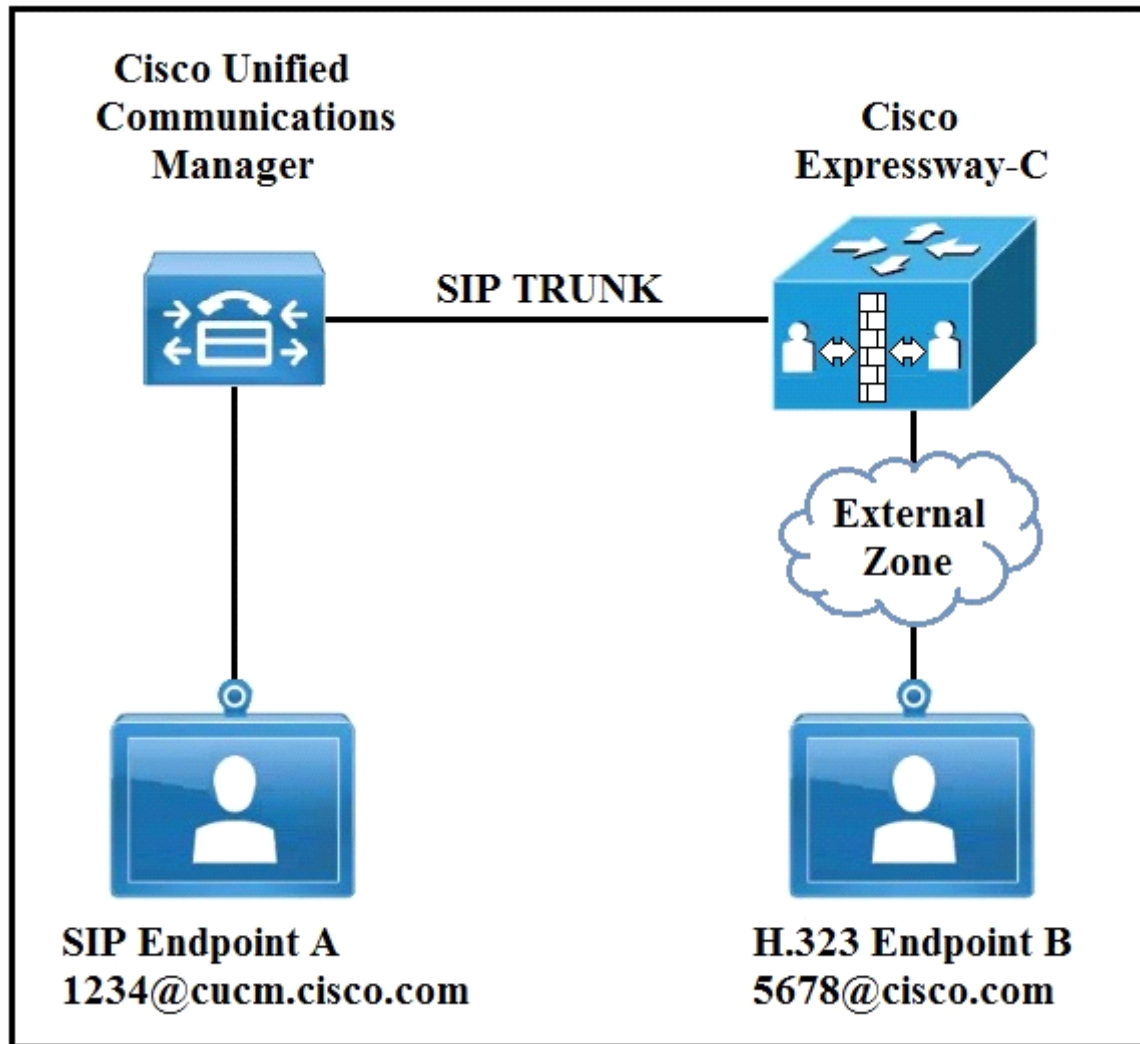
## Question 4

---

**Question Type:** MultipleChoice

---

Refer to the exhibit.



In an environment SIP devices are registered to CUCM and H.323 devices to VCS. What would be required to enable these calls to setup correctly?

**Options:**

---

- A- Create a presearch transform.
- B- Change the domain of SIP endpoint A to cisco.com.
- C- Disable SIP in the external zone.
- D- Change the interworking mode to On.

**Answer:**

---

D

## Question 5

---

**Question Type: MultipleChoice**

---

Where are voice calls handled in a Cisco Jabber hybrid cloud-based deployment with Cisco Webex Platform Service?

**Options:**

---

- A-** Voice calls use Webex Calling platform for call control and use hybrid media nodes for local conferencing.
- B-** Voice calls use local media nodes to keep traffic internal for internal traffic and use Webex Calling for external calls.
- C-** Voice call use Cisco Unified Communications Manager for local calls and Webex Calling for external calls.
- D-** Voice calls use local Cisco Unified Communications Manager for all calls.

**Answer:**

---

D

## Question 6

---

**Question Type: MultipleChoice**

---

A company has enabled ICE to optimize call flows and improve video quality between their Cisco Collaboration endpoints internally and externally.

For which reason would you see activity on the TURN server when a call is established between two external endpoints?

**Options:**

---

- A- The video call is using encryption, which is not supported by ICE with CUCM 12.5
- B- ICE cannot reduce the packet loss on the link
- C- A STUN cannot punch holes in the firewall
- D- The video call is using 4K resolution, which is not supported by ICE with CUCM 12.5

**Answer:**

---

A

## Question 7

---

**Question Type:** MultipleChoice

---

What is the Cisco-recommended key length in bits for a Cisco Expressway certificate?

**Options:**

---

- A- 1024
- B- 2048
- C- 4096



D- 8192

**Answer:**

---

C

## Question 8

---

**Question Type: MultipleChoice**

---

In a Mobile and Remote Access deployment, where must communications be encrypted with TLS?

**Options:**

---

- A- Cisco Expressway-E and endpoints outside the enterprise
- B- Cisco Expressway-C, Cisco Unified Communications Manager, and IM&P
- C- Cisco Expressway-C, Cisco Expressway-E, and Cisco Unified Communications Manager
- D- Cisco Expressway-C, Cisco Expressway-E, and endpoints outside the enterprise

**Answer:**

---

A

**To Get Premium Files for 300-820 Visit**

**<https://www.p2pexams.com/products/300-820>**

**For More Free Questions Visit**

**<https://www.p2pexams.com/cisco/pdf/300-820>**

