



**Free Questions for 400-007 by dumpssheet**

**Shared by Warren on 22-07-2024**

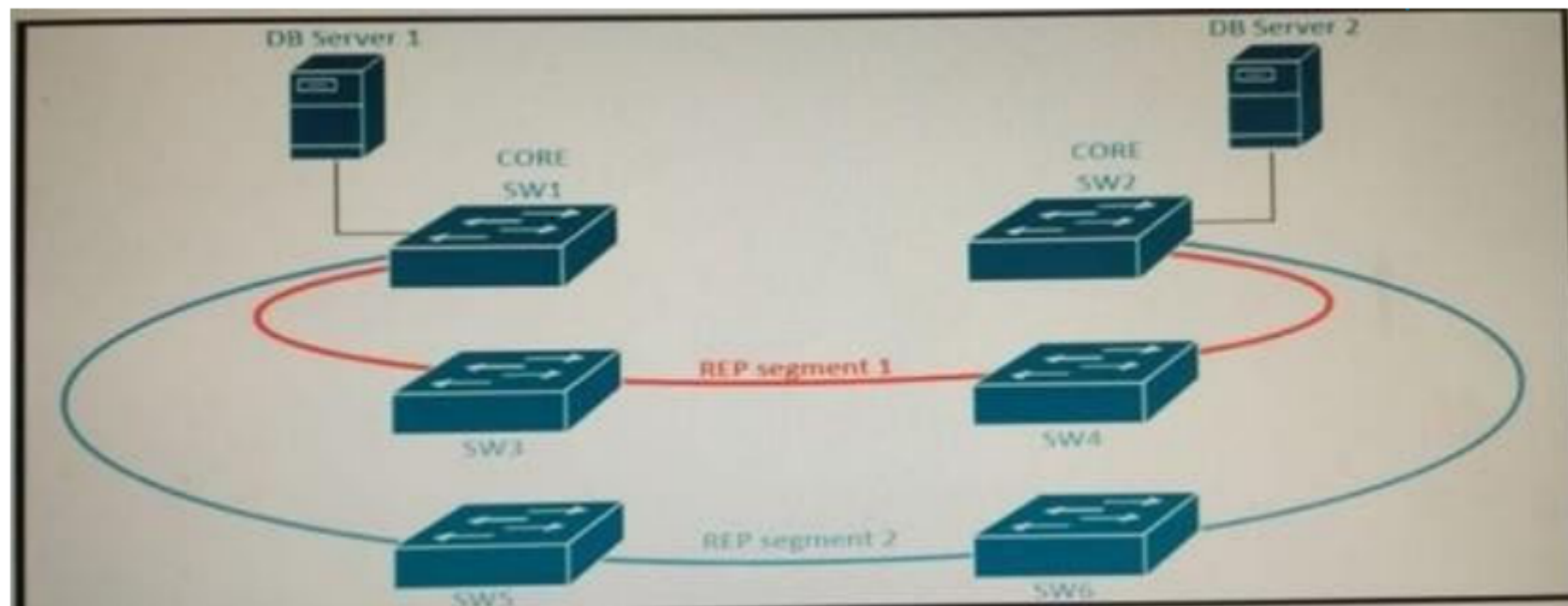
**For More Free Questions and Preparation Resources**

**Check the Links on Last Page**

# Question 1

Question Type: MultipleChoice

Refer to the exhibit.



A new high availability DB sever cluster is installed in the network.

These two servers require high bandwidth and low latency Layer 2 connectivity for database replication.

Which solution supports these requirements?

**Options:**

---

- A- Add two new links between SW1 and SW2 configured as LACP trunk with STP
- B- Add secondary links to REP segments 1 and 2
- C- Add two new links between SW1 and SW2 configured as REP segment 3
- D- Add two new links between SW1 and SW2 configured as REP segments 1 and 2 respectively

**Answer:**

---

C

## Question 2

---

**Question Type: MultipleChoice**

---

You want to split an Ethernet domain in two.

Which parameter must be unique in this design to keep the two domains separated?

**Options:**

---

- A- VTP domain
- B- VTP password
- C- STP type
- D- VLAN ID

**Answer:**

---

D

## Question 3

---

**Question Type:** MultipleChoice

---

Which two design solutions ensure sub 50 msec of the convergence time after a link failure in the network?

(Choose two)

**Options:**

---

A- BFD

- B-** Ti-LFA
- C-** minimal BGP scan time
- D-** MPLS-FRR
- E-** IGP fast hello

**Answer:**

---

B, D

## Question 4

---

**Question Type:** MultipleChoice

---

Which encoding format does cisco ios XE software support for NETCONF?

**Options:**

---

- A-** It supports HTML encoding for NETCONF
- B-** It supports YAML encoding for NETCONF
- C-** It supports XML encoding for NETCONF

**D-** It supports JSON encoding for NETCONF

**Answer:**

---

C

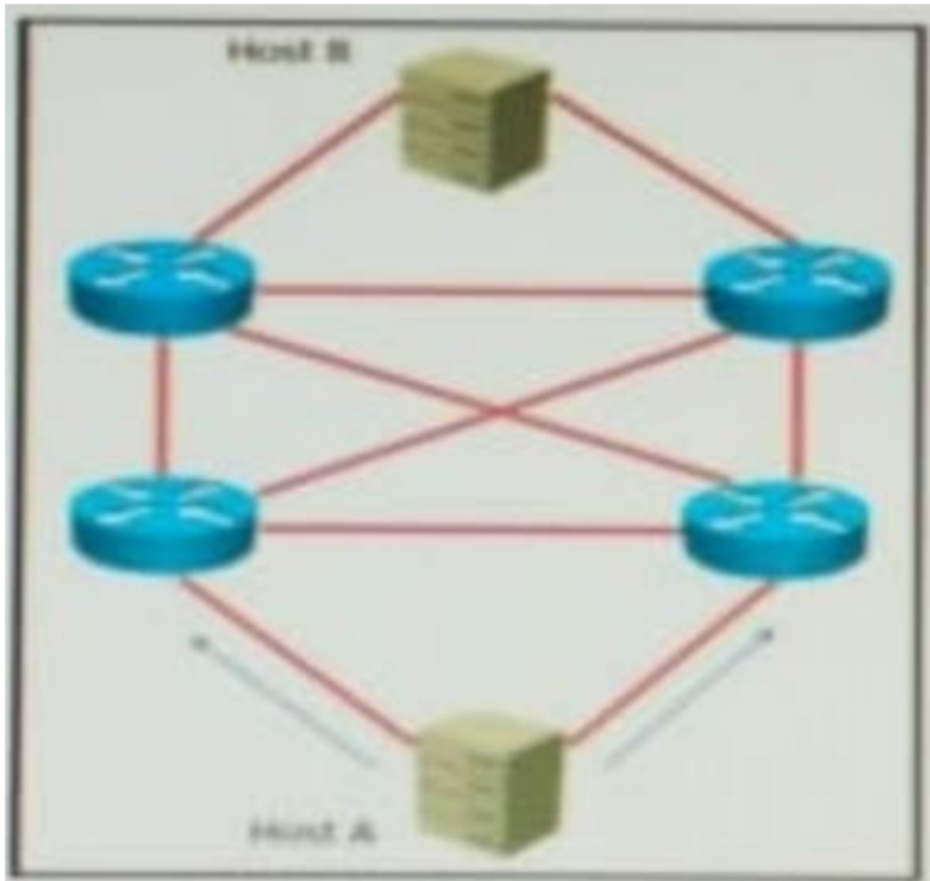
## Question 5

---

**Question Type: MultipleChoice**

---

QUESTION 69 Refer to the exhibit. All links are P2P Layer 3. A high availability application is synchronizing data between host A and host B. To increase chance of delivery the same data is sent twice from host A on two different NICs toward the two NICs on host B.



Which solution must be deployed in the network to ensure that any failure in the network does not trigger data loss on host B?

**Options:**

---

**A-** EIGRP with feasible successors

**B-** BFD

**C-** IP Fast Reroute

**D-** Static routes

**Answer:**

---

A

## Question 6

---

**Question Type:** MultipleChoice

---

Which protocol does an SD-Access wireless Access Point use for its fabric data plane?

**Options:**

---

**A-** GRE

**B-** MPLS

**C-** VXLAN



D- LISP

E- CAPWAP

**Answer:**

---

C

## Question 7

---

**Question Type: MultipleChoice**

---

You are a network designer and you must ensure that the network you design is secure. How do you plan to prevent infected devices on your network from sourcing random DDoS attacks using forged source address?

**Options:**

---

A- ACL based forwarding

B- unicast RPF loose mode

C- unicast RPF strict mode

D- ACL filtering by destination

**Answer:**

---

C

## Question 8

---

**Question Type: MultipleChoice**

---

Which design benefit of PortFast is true?

**Options:**

---

- A-** PortFast does not generate a spanning tree topology change when a station on a port is connected or disconnected
- B-** PortFast disables spanning tree on the port, which puts the port into the forwarding state immediately after it is connected
- C-** PortFast allows small, unmanaged switches to be plugged into ports of access switches without risking switch loops
- D-** PortFast detects one-way communications on the physical port, which prevents switch loops
- E-** PortFast prevents switch loops that are caused by a unidirectional point to point link condition on Rapid PVST+ and MST
- F-** PortFast prevents switched traffic from traversing suboptimal paths on the network

**Answer:**

---

A

## Question 9

---

**Question Type:** MultipleChoice

---

As part of a new network design documentation, you are required to explain the reason for choosing cisco FabricPath for Layer 2 loop avoidance.

Which two elements help Cisco FabricPath mitigate Layer 2 loops if they happen in the Layer 2 MP network?

(Choose two)

### Options:

---

**A-** MAC tunneling

**B-** IS-IS multipath

**C-** RPF check

**D-** TTL header

### Answer:

---

C, D

## Question 10

---

**Question Type:** MultipleChoice

---

Which three items do you recommend for control plane hardening of an infrastructure device? (Choose three.)

### Options:

---

- A- routing protocol authentication
- B- SNMPv3
- C- Control Plane Policing
- D- redundant AAA servers
- E- warning banners
- F- to enable unused services

### Answer:

---

A, B, C

## Question 11

---

**Question Type:** MultipleChoice

---

### Options:

- A- low bandwidth
- B- security
- C- scalability
- D- high latency

### Answer:

---

A

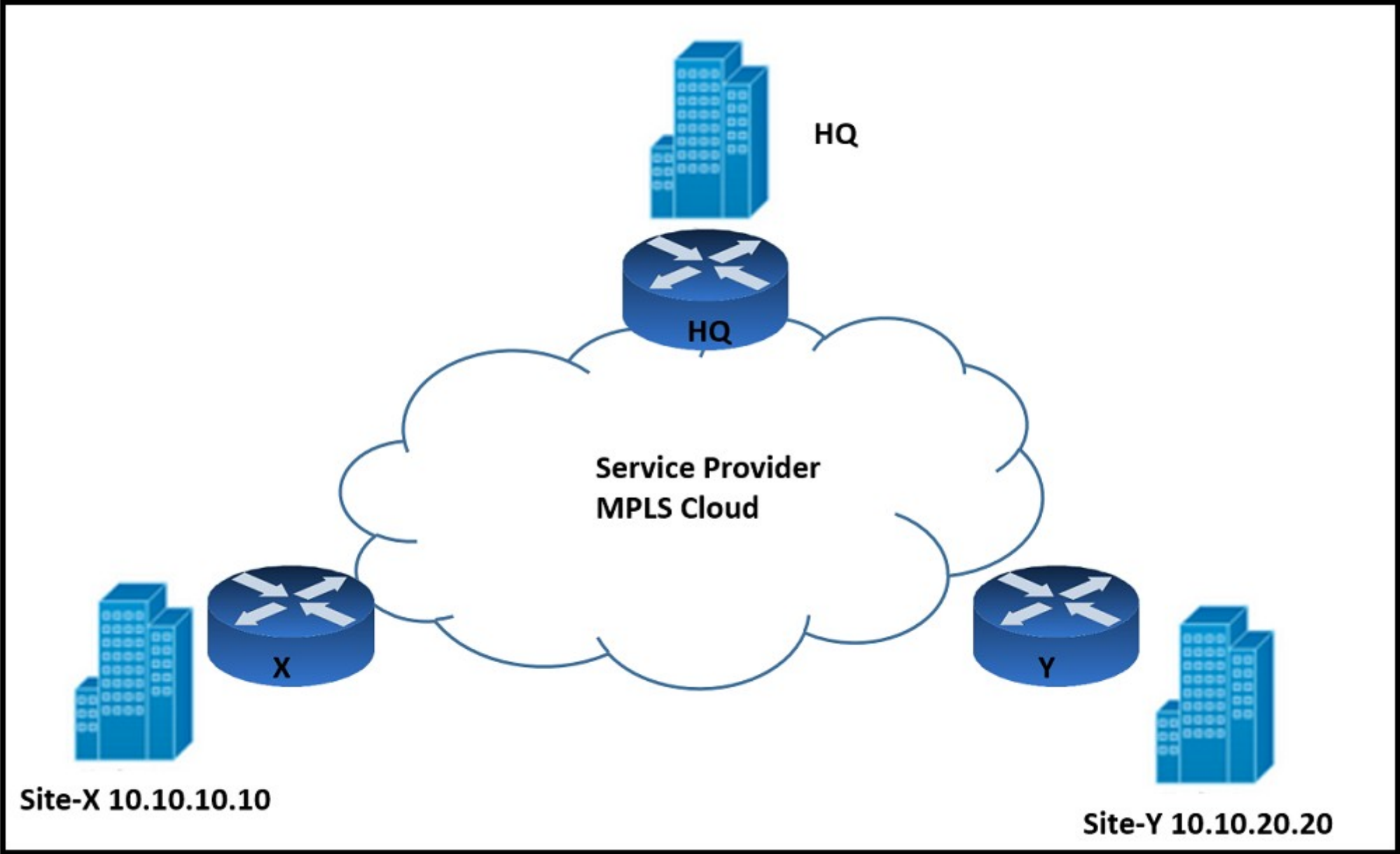
## Question 12

---

**Question Type:** MultipleChoice

---

Refer to the exhibit.



Refer to the exhibit. An architect must design an enterprise WAN that connects the headquarters with 22 branch offices. The number of remote sites is expected to triple in the next three years. The final solution must comply with these requirements:

Only the loopback address of each of the enterprise CE X and Y routers must be advertised to the interconnecting service provider cloud network.

The transport layer must carry the VPNv4 label and VPN payload over the MP-BGP control plane.

The transport layer must not be under service provider control.

Which enterprise WAN transport virtualization technique meets the requirements?

### Options:

---

A- EIGRP Over the Top

B- MPLS over BGP over multipoint GRE

C- DMVPN per VRF

D- point-to-point GRE per VRF

### Answer:

---

B

**To Get Premium Files for 400-007 Visit**

**<https://www.p2pexams.com/products/400-007>**

**For More Free Questions Visit**

**<https://www.p2pexams.com/cisco/pdf/400-007>**

