



**DUMPSHQ**

**Free Questions for HPE6-A80 by dumpshq**

**Shared by Bass on 24-05-2024**

**For More Free Questions and Preparation Resources**

**Check the Links on Last Page**

# Question 1

---

## Question Type: MultipleChoice

---

Refer to the exhibit.

A customer has an existing network with ArubaOS switches, Aruba 7205 controller, and 802.11ac APs. The customer needs a wired upgrade for their campus network and wireless upgrade with 802.11ax APs and would like to get all the functions of AP.

The customer has one building with 3 floors with the following wired devices,

- \* 200 VOIP phones

- \* 8 printers

- \* security cameras

The architect plans to propose 75 AP-535s.

The security cameras are a high definition pan-tilt-zoom with heaters for harsh environments that require more than 45 W to function,

Which exhibit shows an access switch that meets the customer needs?

A)

Quote View					
Filtered by Design Group (Design Group - (2))					
Line#	Part Number		Description	Manufacturer	Unit Price
- 1.0	JZ337A		Aruba AP-535 (US) Unified AP	Hewlett Packard Enter...	\$1,570.00
- 1.1	HG6E5E		Aruba 1Y FC NBD Exch AP 535 SVC [for JZ337A]	Hewlett Packard Enter...	\$66.00
- 1.2	JZ370A		AP-MNT-MP10-A AP mount bracket 10-pack A [split order]	Hewlett Packard Enter...	\$205.00
- 2.0	JZ337A		Aruba AP-535 (US) Unified AP	Hewlett Packard Enter...	\$1,570.00
- 2.1	HG6E5E		Aruba 1Y FC NBD Exch AP 535 SVC [for JZ337A]	Hewlett Packard Enter...	\$66.00
- 2.2	R3J15A		AP-MNT-A AP mount bracket individual A: suspended ceilin...	Hewlett Packard Enter...	\$30.00
- 3.0	JL665A		Aruba 6300F 48G CL4 PoE 4SFP56 Switch	Hewlett Packard Enter...	\$11,199.00
- 3.1	JL665A	ABA	INCLUDED: Power Cord - U.S. localization	Hewlett Packard Enter...	incl.
- 3.2	HR5U1E		HPE 1Y FC NBD Exch Aruba6300F 48 PoE SVC [for JL665A]	Hewlett Packard Enter...	\$559.00
- 3.3	H8XE6E		HPE Aruba 6xxxN8xxx Install Swt SVC [for JL665A]	Hewlett Packard Enter...	\$1,000.00
- 3.4	J9150D		Aruba 10G SFP+ LC SR 300m MMF Transceiver	Hewlett Packard Enter...	\$1,040.00

B)

Quotation - Composite View

Quote View

Quotation Bro... Filtered by Design Group (Design Group - (3))

Line#	Part Number	Description	Manufacturer	Unit Price
- 1.0	JL726A	Aruba 6200F 48G 4SFP+ Switch	Hewlett Packard Enter...	\$5,219.00
- 1.1	JL726A ABA	INCLUDED: Power Cord - U.S. localization	Hewlett Packard Enter...	incl.
- 1.2	HR1E2E	Aruba 1Y FC NBD Exch 6200F 48G SVC [for JL726A]	Hewlett Packard Enter...	\$214.00
- 1.3	H8XE6E	HPE Aruba 6xxxN8xxx Install Swt SVC [for JL726A]	Hewlett Packard Enter...	\$1,000.00
- 1.4	J9150D	Aruba 10G SFP+ LC SR 300m MMF Transceiver	Hewlett Packard Enter...	\$1,040.00
- 2.0	JZ337A	Aruba AP-535 (US) Unified AP	Hewlett Packard Enter...	\$1,570.00
- 2.1	HG6E5E	Aruba 1Y FC NBD Exch AP 535 SVC [for JZ337A]	Hewlett Packard Enter...	\$66.00
- 2.2	JZ370A	AP-MNT-MP10-A AP mount bracket 10-pack A [split order]	Hewlett Packard Enter...	\$205.00
- 3.0	JZ337A	Aruba AP-535 (US) Unified AP	Hewlett Packard Enter...	\$1,570.00
- 3.1	HG6E5E	Aruba 1Y FC NBD Exch AP 535 SVC [for JZ337A]	Hewlett Packard Enter...	\$66.00
- 3.2	R3J15A	AP-MNT-A AP mount bracket individual A: suspended ceilin...	Hewlett Packard Enter...	\$30.00
<b>Quote Total</b>				

C)

Quotation - Composite View

Quote View

Quotation Bro... Filtered by Design Group (Design Group - 1)

Line#	Part Number	Description	Manufacturer	Unit Price
- 1.0	JZ337A	Aruba AP-535 (US) Unified AP	Hewlett Packard Enter...	\$1,570.00
- 1.1	HG6E5E	Aruba 1Y FC NBD Exch AP 535 SVC [for JZ337A]	Hewlett Packard Enter...	\$66.00
- 1.2	JZ370A	AP-MNT-MP10-A AP mount bracket 10-pack A [split order]	Hewlett Packard Enter...	\$205.00
- 2.0	JZ337A	Aruba AP-535 (US) Unified AP	Hewlett Packard Enter...	\$1,570.00
- 2.1	HG6E5E	Aruba 1Y FC NBD Exch AP 535 SVC [for JZ337A]	Hewlett Packard Enter...	\$66.00
- 2.2	R3J15A	AP-MNT-A AP mount bracket individual A: suspended ceilin...	Hewlett Packard Enter...	\$30.00
- 3.0	JL659A	Aruba 6300M 48SR5 CL6 PoE 4SFP56 Switch	Hewlett Packard Enter...	\$15,499.00
- 3.1	HL6F6E	HPE 1Y FC NBD ExchAruba6300M48P SRPoESVC [for JL65...	Hewlett Packard Enter...	\$784.00
- 3.2	H8XE6E	HPE Aruba 6xxxN8xxx Install Swt SVC [for JL659A]	Hewlett Packard Enter...	\$1,000.00
- 3.3	JL086A	Aruba X372 54VDC 680W Power Supply	Hewlett Packard Enter...	\$749.00
- 3.4	JL086A	ABA INCLUDED: Power Cord - U.S. localization	Hewlett Packard Enter...	incl.
- 3.5	J9150D	Aruba 10G SFP+ LC SR 300m MMF Transceiver	Hewlett Packard Enter...	\$1,040.00
<b>Quote Total</b>				

D)



Quotation - Composite View

Quote View

Quotation Bro... Filtered by Design Group (Design Group)

Line#	Part Number	Description	Manufacturer	Unit Price
1.0	JL728A	Aruba 6200F 48G Class4 PoE 4SFP+ 740W Switch	Hewlett Packard Enter...	\$7,449.00
1.1	JL728A ABA	INCLUDED: Power Cord - U.S. localization	Hewlett Packard Enter...	incl.
1.2	HL2K8E	Aruba 1Y FC NBD Exch 6200F 48G 740POESVC [for JL728A]	Hewlett Packard Enter...	\$356.00
1.3	H8XE6E	HPE Aruba 6xxxN8xxx Install Swt SVC [for JL728A]	Hewlett Packard Enter...	\$1,000.00
1.4	J9150D	Aruba 10G SFP+ LC SR 300m MMF Transceiver	Hewlett Packard Enter...	\$1,040.00
2.0	JZ337A	Aruba AP-535 (US) Unified AP	Hewlett Packard Enter...	\$1,570.00
2.1	HG6E5E	Aruba 1Y FC NBD Exch AP 535 SVC [for JZ337A]	Hewlett Packard Enter...	\$66.00
2.2	JZ370A	AP-MNT-MP10-A AP mount bracket 10-pack A [split order]	Hewlett Packard Enter...	\$205.00
3.0	JZ337A	Aruba AP-535 (US) Unified AP	Hewlett Packard Enter...	\$1,570.00
3.1	HG6E5E	Aruba 1Y FC NBD Exch AP 535 SVC [for JZ337A]	Hewlett Packard Enter...	\$66.00
3.2	R3J15A	AP-MNT-A AP mount bracket individual A: suspended ceilin...	Hewlett Packard Enter...	\$30.00
<b>Quote Total</b>				

### Options:

- A- Option A
- B- Option B
- C- Option C
- D- Option D

**Answer:**

---

D

## Question 2

---

**Question Type:** MultipleChoice

---

What is one reason to deploy an Aruba CX switch when compared to an ArubaOS switch?

**Options:**

---

- A-** to obtain API-enabled programmability for greater automation
- B-** to support Aruba Dynamic Segmentation
- C-** to obtain higher wattage power modules for enhanced PoE+ support
- D-** to support Zero Touch provisioning (ZTP)

**Answer:**

---

C

## Question 3

---

**Question Type:** MultipleChoice

---

What is one additional benefit that Foundation Care gives beyond the included warranty in Aruba products?

### Options:

---

- A- Next Business Day Shipping
- B- unlimited 24x7 access to TAG and online support
- C- business hour phone support for hardware issues
- D- installation and getting started services

### Answer:

---

A

## Question 4

---

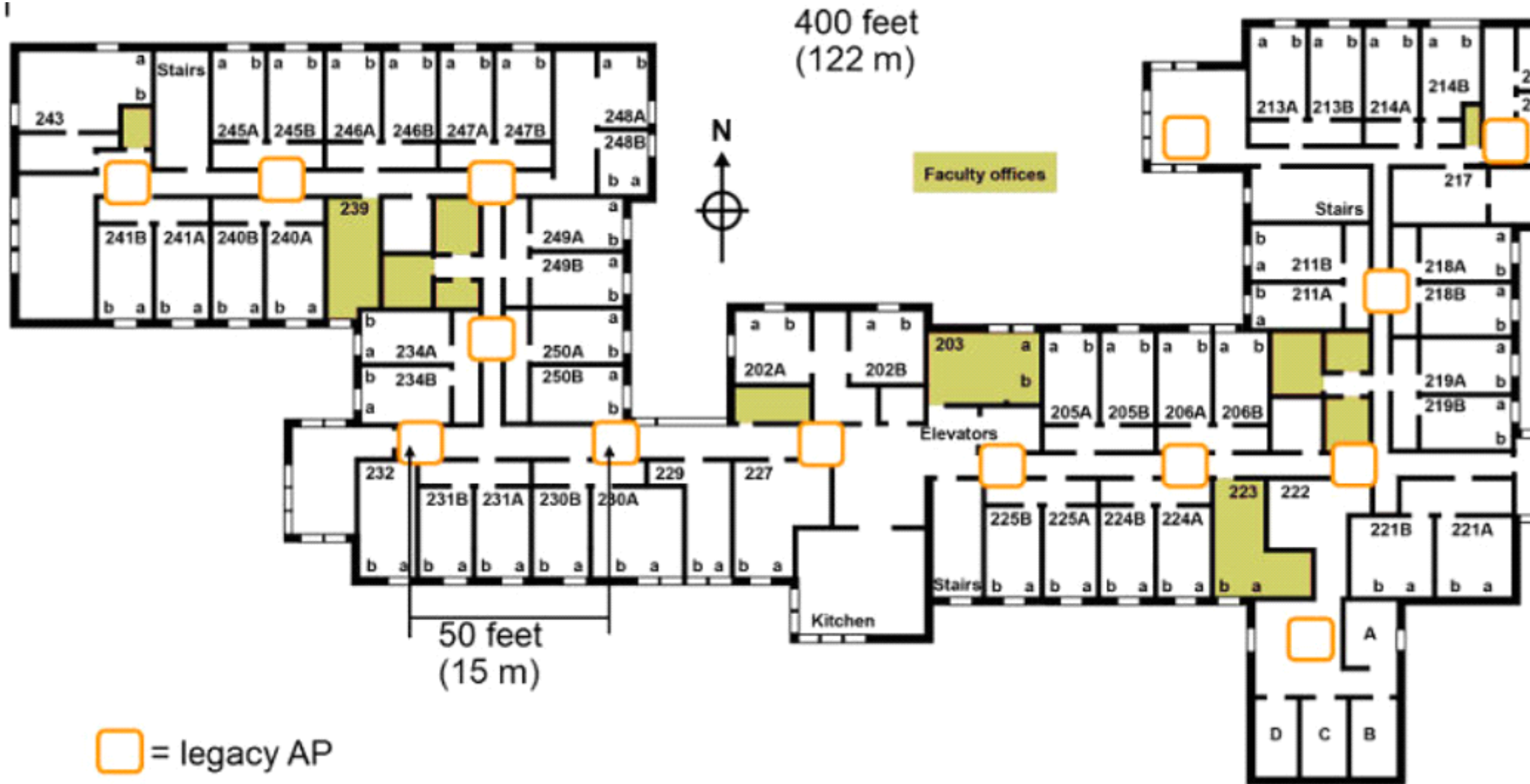
**Question Type:** MultipleChoice

---



Refer to the exhibit.

I



The exhibit shows the current AP deployment in a school. This customer indicates that the current wireless performance is inadequate and w B02.11ax.

For the new' solution, what should the network architect recommend?

**Options:**

---

- A- APs deployed in rooms with a density-based design
- B- APs deployed in similar locations, but with dual 5 GHz radios
- C- APS deployed in similar locations, but with higher gain antennas
- D- APs deployed in hallways with about twice the density

**Answer:**

---

D

## Question 5

---

**Question Type:** MultipleChoice

---

Refer to the exhibit.



# Port 1

Usage ▾

Sources ▾

Max

1000 M

666 M

333 M

0

333 M

666 M

1000 M

10:00

10:15

10:30

10:45

11:00

11:15

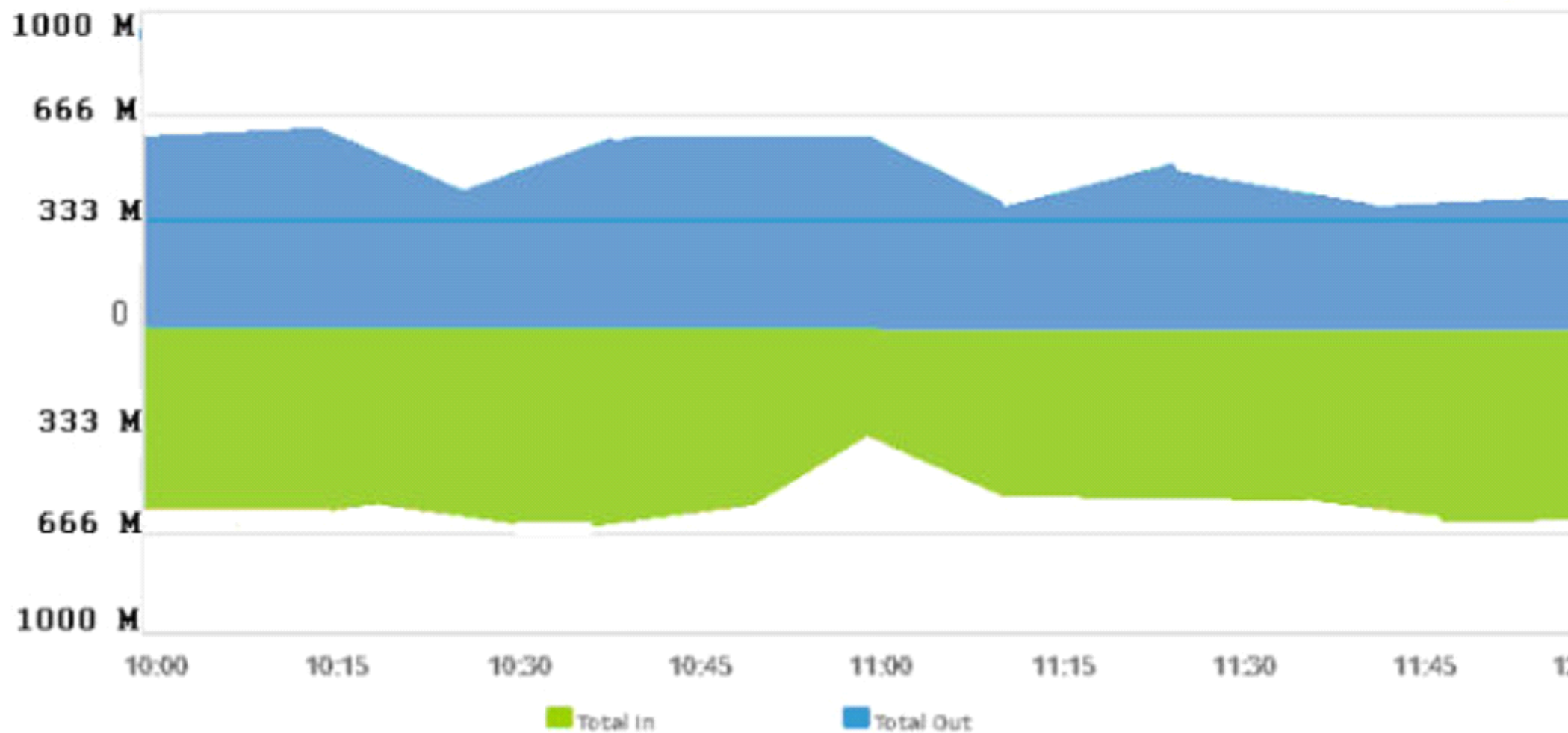
11:30

11:45

12:00

Total In

Total Out





# Port 2

Usage ▾

Sources ▾

Max

1000 M

666 M

333 M

0

333 M

666 M

1000 M

10:00

10:15

10:30

10:45

11:00

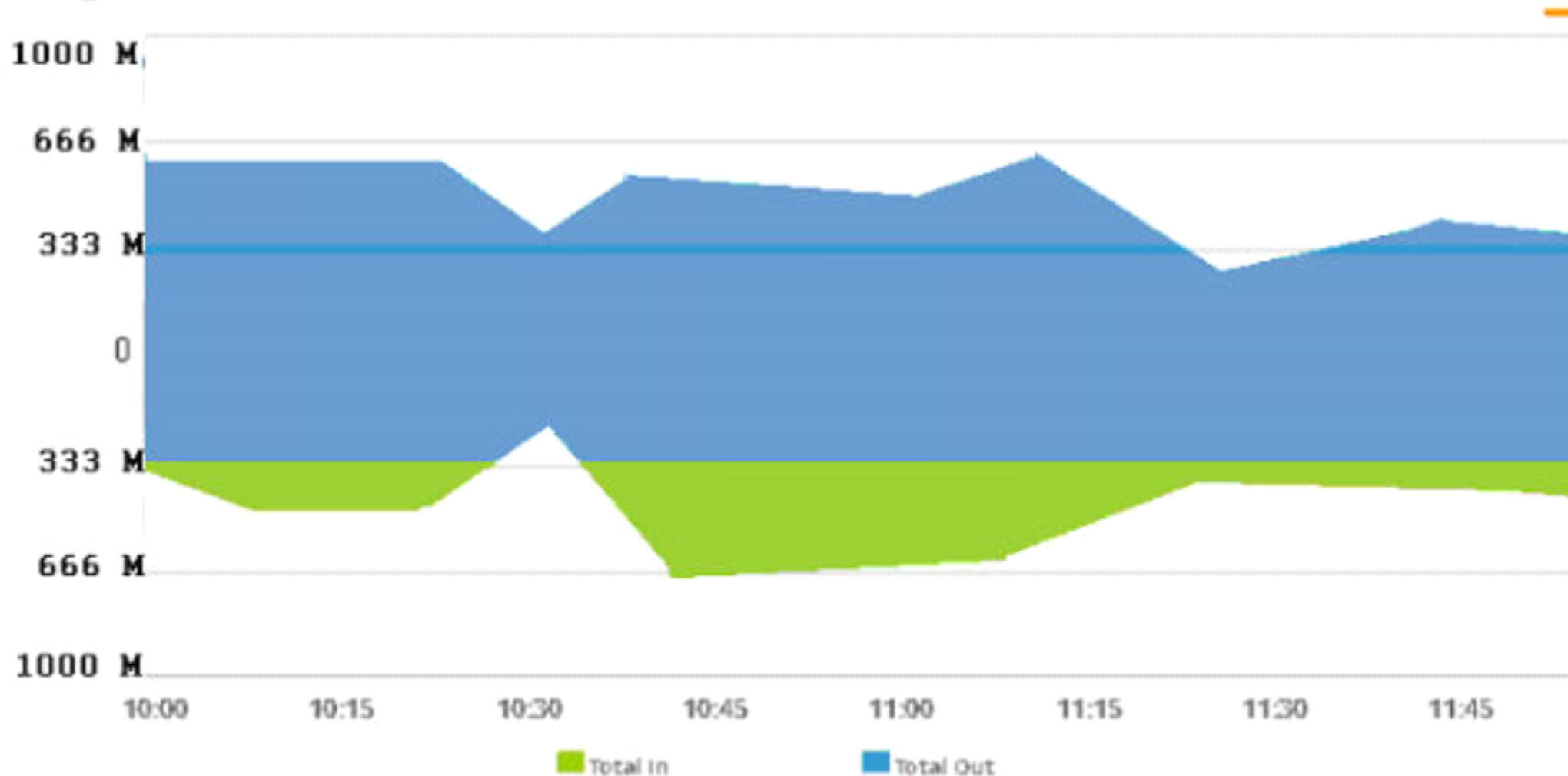
11:15

11:30

11:45

Total In

Total Out







# Port 3

Usage ▾

Sources ▾

Max

1000 M

666 M

333 M

0

333 M

666 M

1000 M

10:00

10:15

10:30

10:45

11:00

11:15

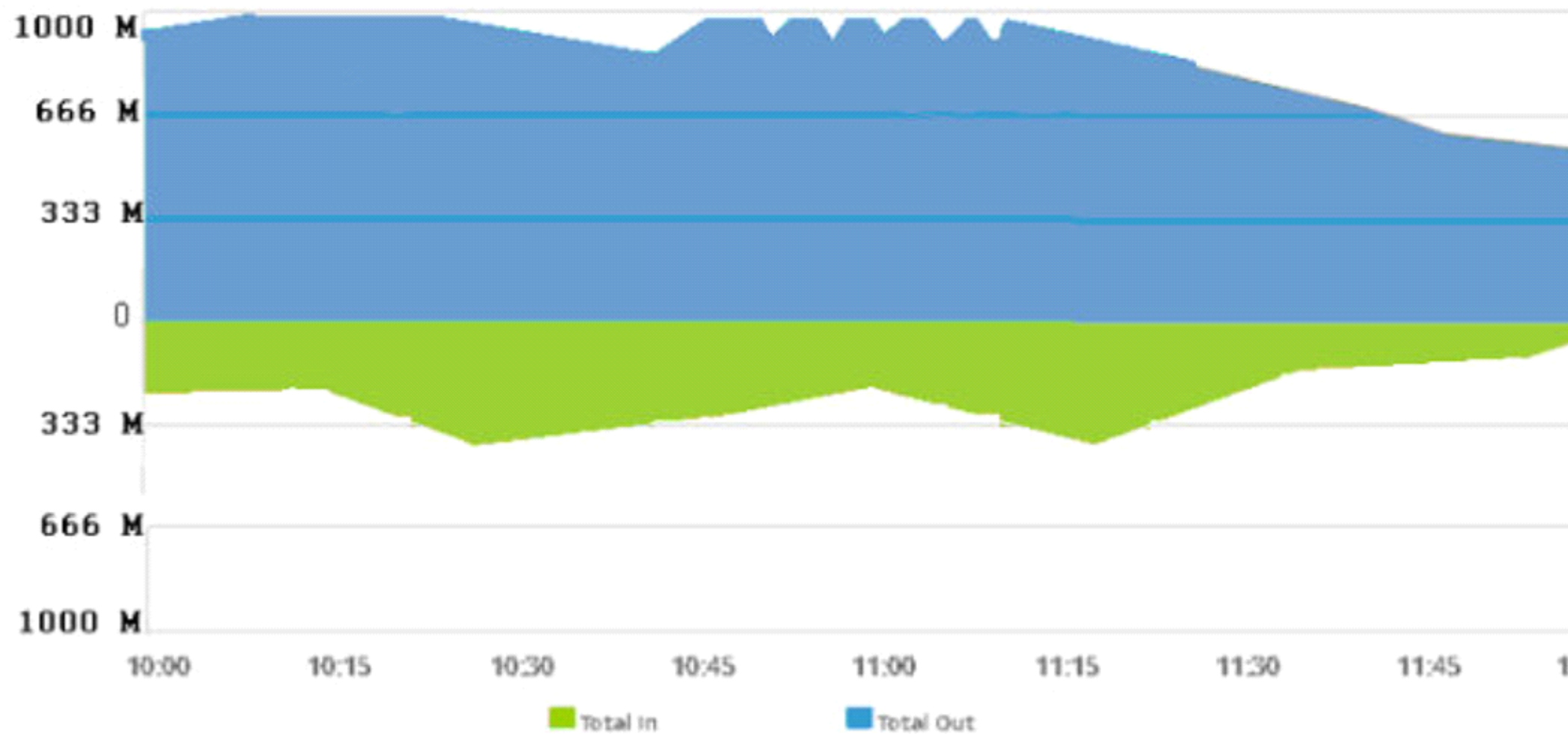
11:30

11:45

12:00

Total In

Total Out



A customer needs a wired network upgrade and has complained about performance issues. The architect collected information about traffic now on several switch ports in different locations across the network, and the results are shown in the exhibit. Each of these ports is a 1Gbps port.

What can the architect conclude?

**Options:**

---

- A-** All of the ports show serious congestion
- B-** Port 1 shows periods of congestion; other ports are not congested.
- C-** Port 3 shows periods of congestion; other ports are not congested.
- D-** None of these ports show any periods of congestion

**Answer:**

---

D

## Question 6

---

**Question Type:** MultipleChoice

---

A hospital needs a better way to track its inventory including wireless medical devices that are moved around the site a lot.

Which solution meets these needs?

**Options:**

---

- A- Aruba asset tags and beacons
- B- Aruba beacons, APs, and AirWave
- C- Aruba beacons and Meridian
- D- Aruba asset tags, APs; and Meridian

**Answer:**

---

C

## Question 7

---

**Question Type:** MultipleChoice

---

A hospital wireless network must support many different types of users and devices, including:

- \* Visitors who access the Internet
- \* Admin staff, who run applications such as scheduling
- \* Medical staff, who look up patient info on their tablets
- \* Patient monitoring devices, which must not lose any traffic
- \* Communicator badges, which support real-time voice to allow nurses and doctors to communicate

The hospital needs to ensure that the most vital and time-sensitive traffic is prioritized and that visitors do not interfere with hospital applications. The MC should mark traffic that passes through it for an appropriate priority.

Which plan meets the needs? (The plans describe firewall roles and rules but do not need to use correct syntax. Note that security roles are also not included.)

### **Options:**

---

- A-** Medical staff = Highest. Patient monitoring = Highest. Admin staff - High. Communicator = Normal. Visitors = Low.
- B-** Communicator = Highest. Patient monitoring = Highest. Medical staff = High. Admin staff = Normal: Visitors = Low.
- C-** Patient monitoring = Highest. Medical staff = Highest. communicators = High. Admin staff = High. Visitors = Normal.
- D-** Medical staff = Highest. Communicator = High. Patient monitoring = High. Admin = High. Visitors = Normal

**Answer:**

---

A

## **Question 8**

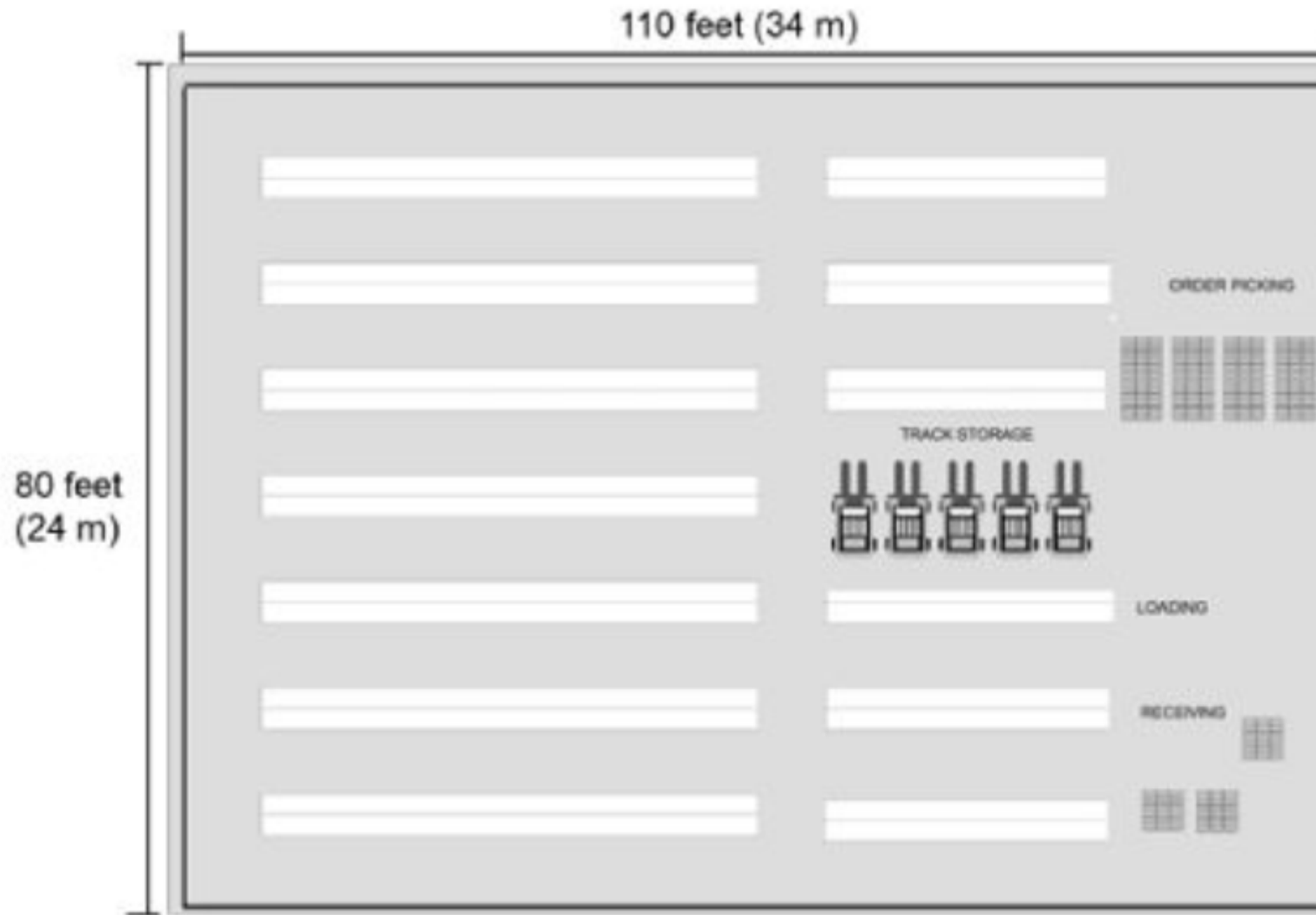
---

**Question Type: MultipleChoice**

---

Refer to the exhibit.





This warehouse has the dimensions shown in the exhibit. The warehouse is 20 feet (6 m) high up to a steel railing on the ceiling. The shelves are about 16 feet (5m) high, and they hold large containers filled with fluid and metal equipment.

The customer needs consistent wireless coverage throughout the warehouse, mostly to support the tablets that employees use to run Inventory tracking and other applications. The warehouse staff works in shifts of 20.

The architect has selected AP-515S. About how many APs should the architect propose?

**Options:**

---

A- about 13-16

B- about 23-32

C- about 6-8

D- about 6-4

**Answer:**

---

C

## Question 9

---

**Question Type: MultipleChoice**

---

An indoor sports stadium has 5.000 seats in two rings:

The stadium has a ceiling height of 72 feet (22 m).

There is a catwalk around the perimeter of the stadium that is 54 feet (13 m) from the floor.

There are two scoreboards at either end of the stadium

The construction of the stadium is concrete and steel.

The customer has indicated a preference for overhead coverage, and the wireless network should support 3500 concurrent clients. The architect plans to install the APs on the catwalk to service sections of the floor below

Which type of antennas are recommended for the APs that provide the overhead coverage?

**Options:**

---

A- downtilt

B- high gain directional

C- high gain omnidirectional

D- vagi

**Answer:**

---

B

**To Get Premium Files for HPE6-A80 Visit**

**<https://www.p2pexams.com/products/hpe6-a80>**

**For More Free Questions Visit**

**<https://www.p2pexams.com/hp/pdf/hpe6-a80>**

