



Free Questions for PEGAPCRSA80V1_2019 by ebraindumps

Shared by Hull on 15-04-2024

For More Free Questions and Preparation Resources

Check the Links on Last Page

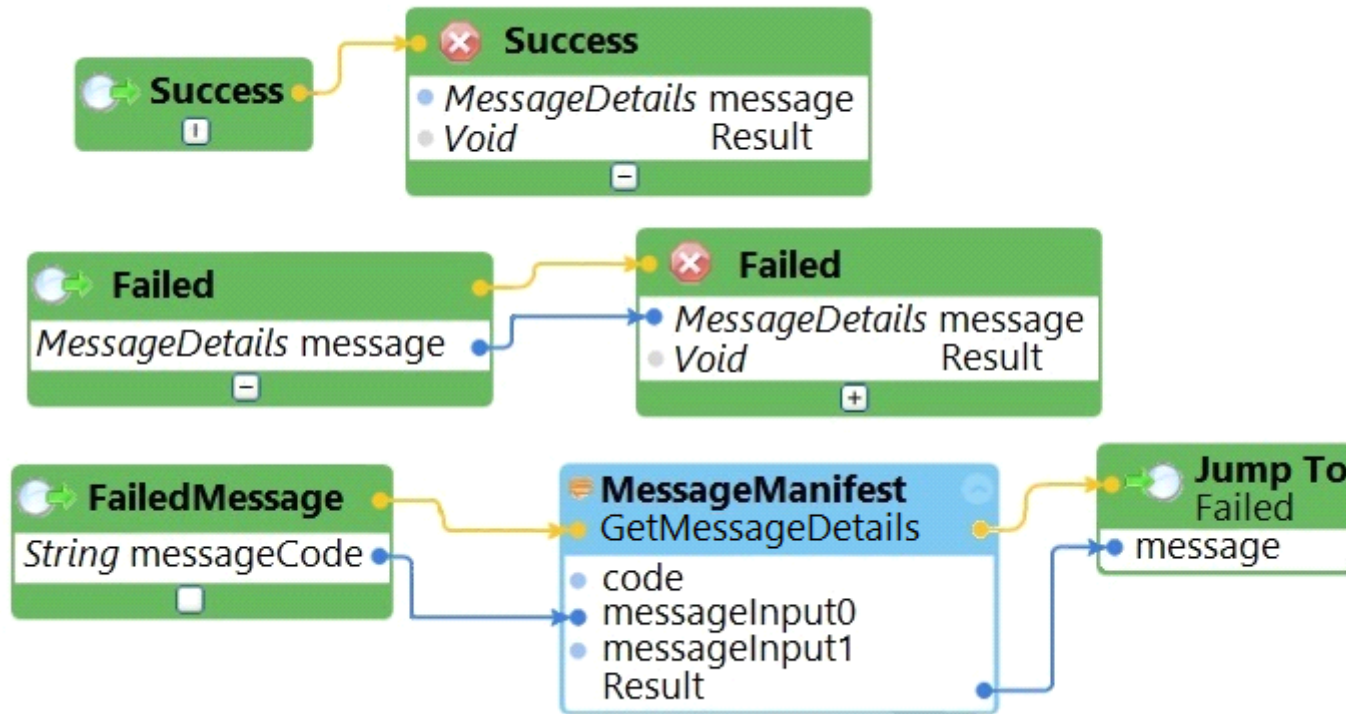
Question 1

Question Type: MultipleChoice

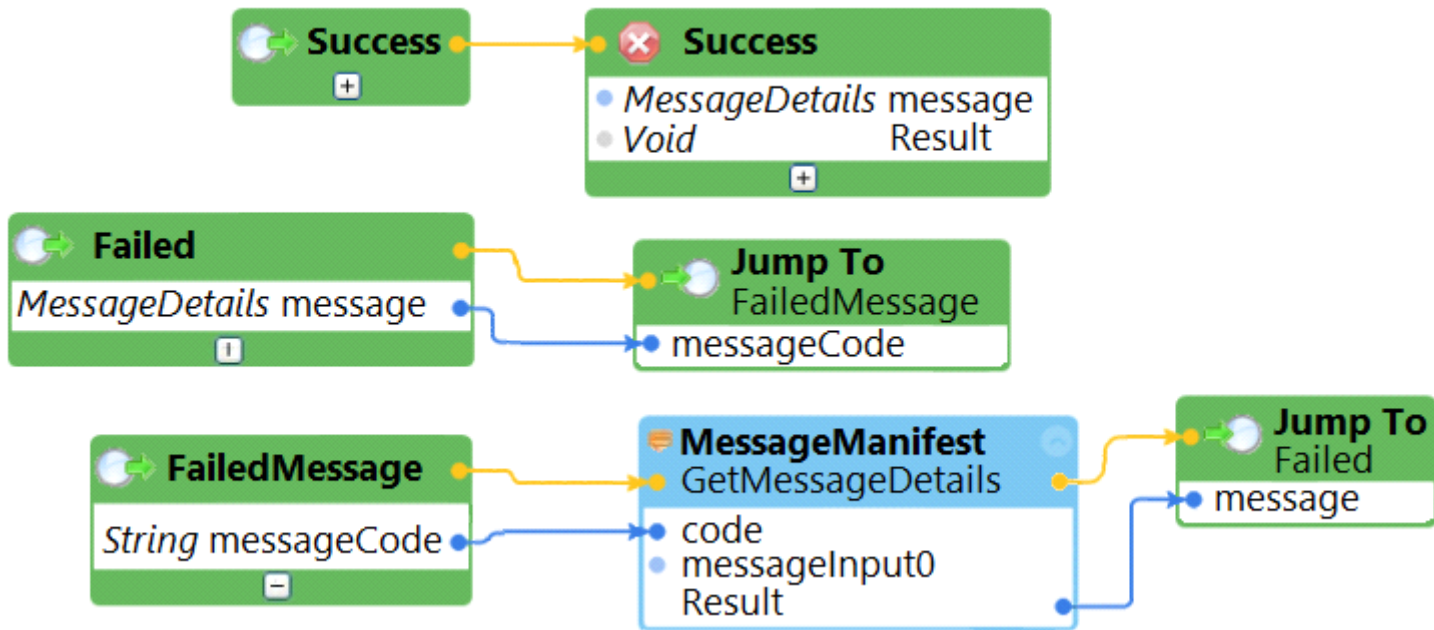
The business requirements states that the login automation creates a Success or Failed response when attempting to log in to the finance application. If a failure occurs, the automation should pass a message code with the Message Manifest before exiting the automation.

Which image represents the exit logic?

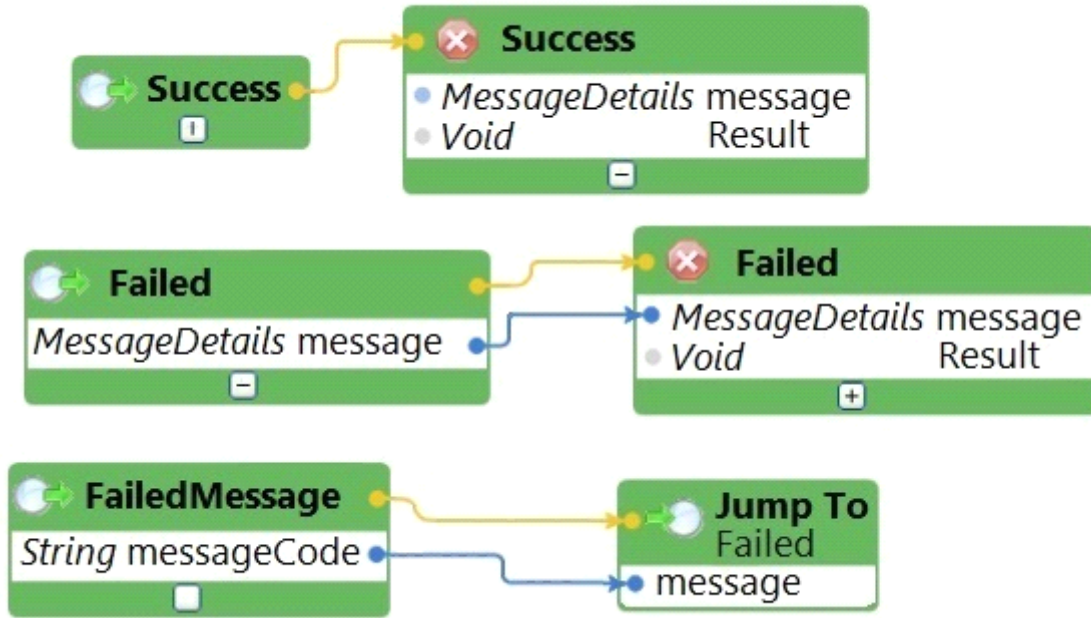
A



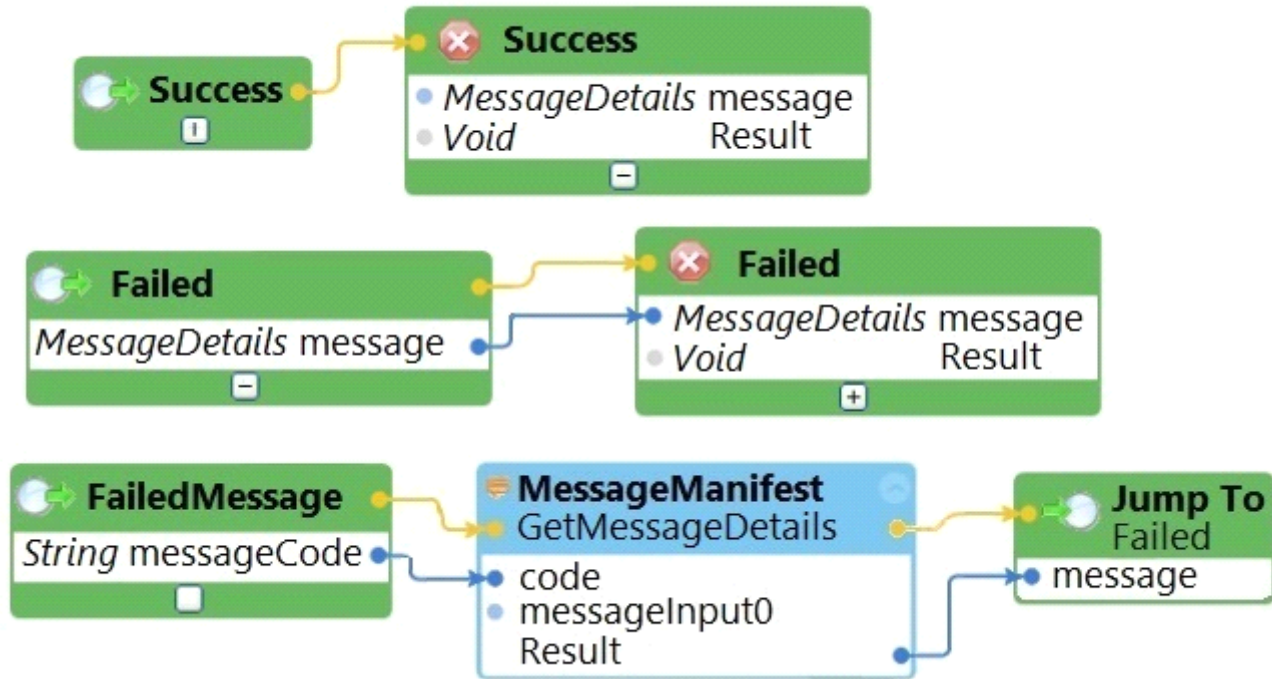
B



c



D



Options:

- A- Exhibit A
- B- Exhibit B
- C- Exhibit C
- D- Exhibit D

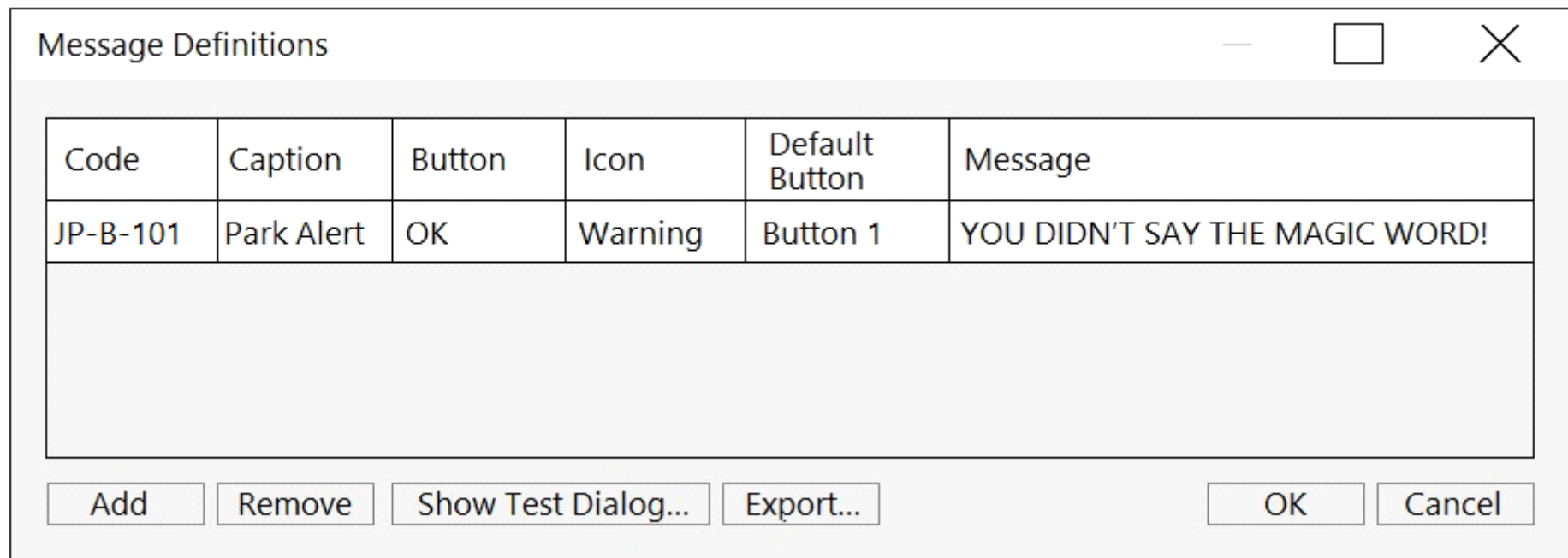
Answer:

C

Question 2

Question Type: MultipleChoice

The following image shows a Message Definitions configuration.

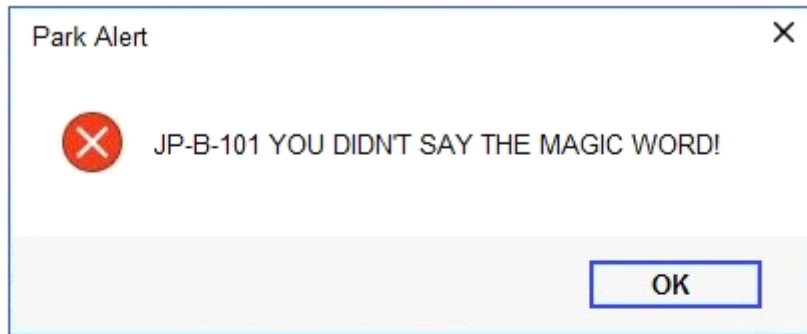


Code	Caption	Button	Icon	Default Button	Message
JP-B-101	Park Alert	OK	Warning	Button 1	YOU DIDN'T SAY THE MAGIC WORD!

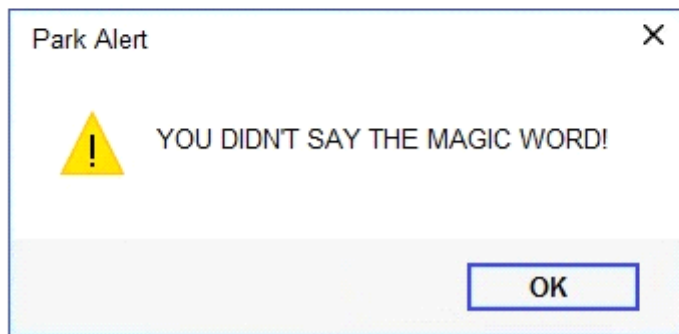
Buttons: Add, Remove, Show Test Dialog..., Export..., OK, Cancel

Which option is the correct representation of the message configuration settings?

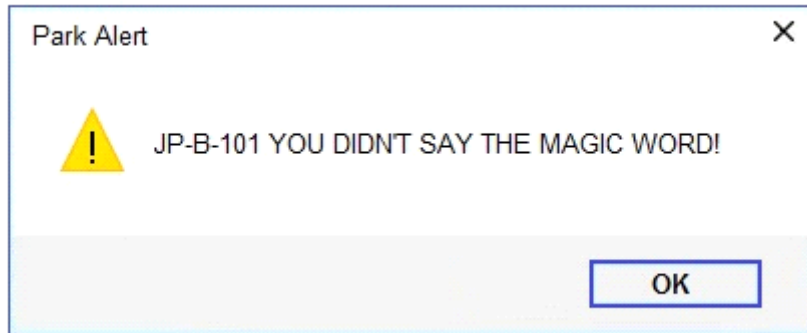
A



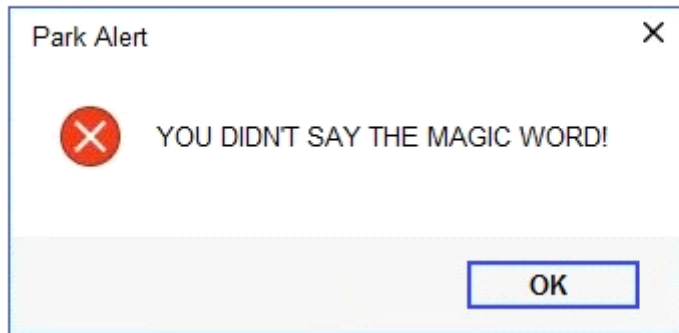
B



C



D



Options:

A- Exhibit A

B- Exhibit B

C- Exhibit C

D- Exhibit D

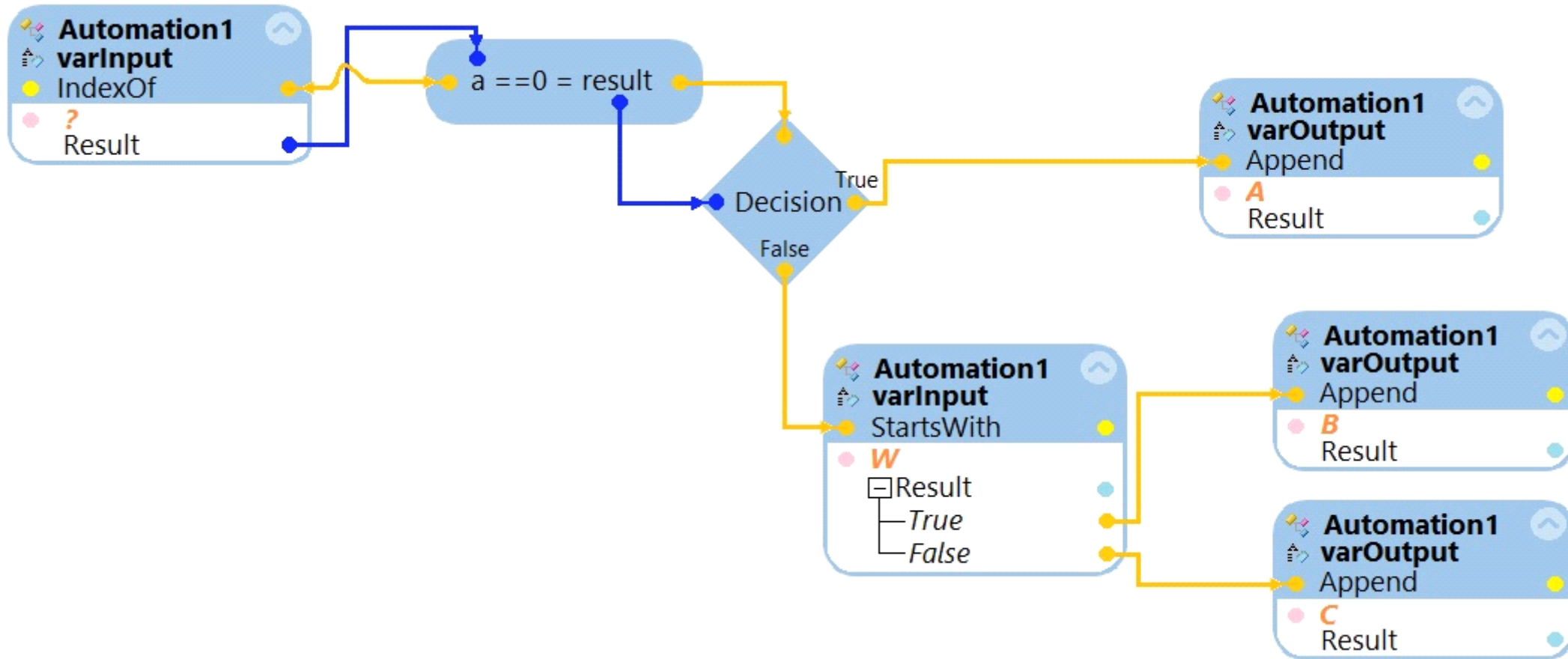
Answer:

B

Question 3

Question Type: MultipleChoice

The variable varInput is a String that holds the value What is the output?



What is the outcome of the above automation?

Options:

A- An exception is thrown.

- B- The variable varOutput ends with C.
- C- The variable varOutput ends with A.
- D- The variable varOutput ends with B.

Answer:

D

Question 4

Question Type: MultipleChoice

After setting up Start My Day, the end user makes some changes in the Manage Applications window to prioritize and manage the applications configured to launch using the Start My Day functionality.

Manage Applications:

	Application	Enabled	Type	Position	Size	Path
▶	ACMESearchSystem	<input checked="" type="checkbox"/>	Adapter	855,11	951,587	
	CRM	<input type="checkbox"/>	Adapter	15,487	850,475	C:\Program Files (x86
	Notepad++	<input checked="" type="checkbox"/>	Adapter	855,487	951,475	C:\Program Files (x86
	BankerInsight	<input checked="" type="checkbox"/>	Adapter	15,10	839,475	C:\Program Files (x86

Add...

Remove

Capture Screen Details

Which of the following applications does the user see on the desktop after using the Start My Day functionality?

Options:

- A- ACMESearchSystem, Notepad++, BankerInsight
- B- CRM, BankerInsight
- C- ACMESearchSystem, CRM, Notepad++, BankerInsight
- D- CRM, Notepad++, BankerInsight

Answer:

A

Question 5

Question Type: DragDrop

In the Answer Area, drag each use case on the left to the correct Toolbox item.

Answer Area

Use Case

Toolbox item

Answer:
Used to add custom log entries to the RuntimeLog.txt file and the Output window.

DiagnosticLog

Question 6

Used to allow two concurrent threads to communicate and to synchronize events.

LogController

Question Type: MultipleChoice

Holds a value which may be increased or decreased by calling a method.

Counter

Your log automation is failing and you cannot proceed because the Submit button is not enabled. After searching the HTML code, you discover that the Submit button is enabled only after the Password field experiences a key press.

Used to enable or disable diagnostic logging to the RuntimeLog.txt file.

Signal

Used to permit conditional execution based on the value of a variable.

Switch

A- On the Password field, add an Enabled property and set it to True.

B- On the Password field, add a RaiseEvent method with onkeypress.

C- On the Submit button, add a Disabled property and set it to True.

D- On the Submit button, add a RaiseEvent method with onkeypress.

Answer:

A

Question 7

Question Type: MultipleChoice

You have extracted a proxy for a data set and are using it to pass the data into a procedure automation input parameter. In the procedure automation, the data link from the input parameter is not connecting to the stringValue on a stringUtils method.

What two troubleshooting steps do you perform to correct the issue? (Choose two.)

Options:

- A-** Confirm the proxy data in a messageDialog.
- B-** Confirm the stringUtils method works.
- C-** Confirm the data type on the procedure automation input parameter.
- D-** Confirm the proxy's data type matches with the stringUtils method.

Answer:

A, C

To Get Premium Files for PEGAPCRSA80V1_2019 Visit

https://www.p2pexams.com/products/pegapcrsa80v1_2019

For More Free Questions Visit

<https://www.p2pexams.com/pegasystems/pdf/pegapcrsa80v1-2019>

