



Free Questions for [AAACE-PSP](#) by [go4braindumps](#)

Shared by [Russo](#) on [24-05-2024](#)

For More Free Questions and Preparation Resources

[Check the Links on Last Page](#)

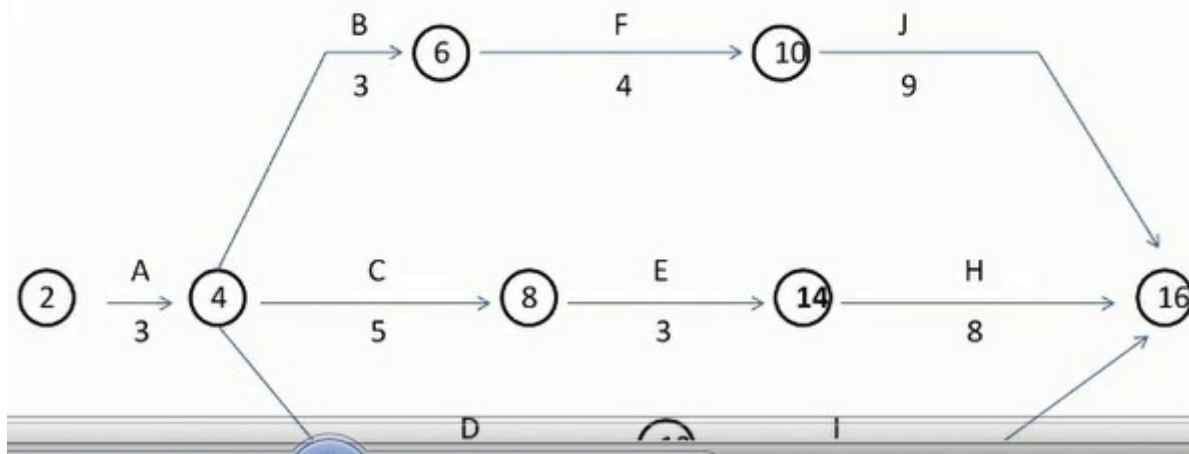
Question 1

Question Type: MultipleChoice

If Activity E's duration changes to 4 months, what is the overall duration of the project.

Refer to the following table and diagram to answer the following questions. Consider this to be the entire network. The diagram is incomplete. This table represents activities, predecessors and durations for a hazardous waste incineration facility:

Activity	Description	Predecessors	Duration (months)
A	Develop information for public hearings	-	3
B	Hold public hearings	A	3
C	Develop draft plans and specifications	A	5
D	Contact stakeholders and others	A	7
E	Obtain permits	B, C	3
F	Order equipment for facility	B	4
G	Procure and prepare land.	B	6
H	Construct facility	D, E, F & G	8
I	Approval of operating procedures	D	6
J	Install equipment, staff, faculty	F	9



Options:

A- 19 months.

B- 20 months.

C- 22 months.

D- 21 months.

Answer:

B

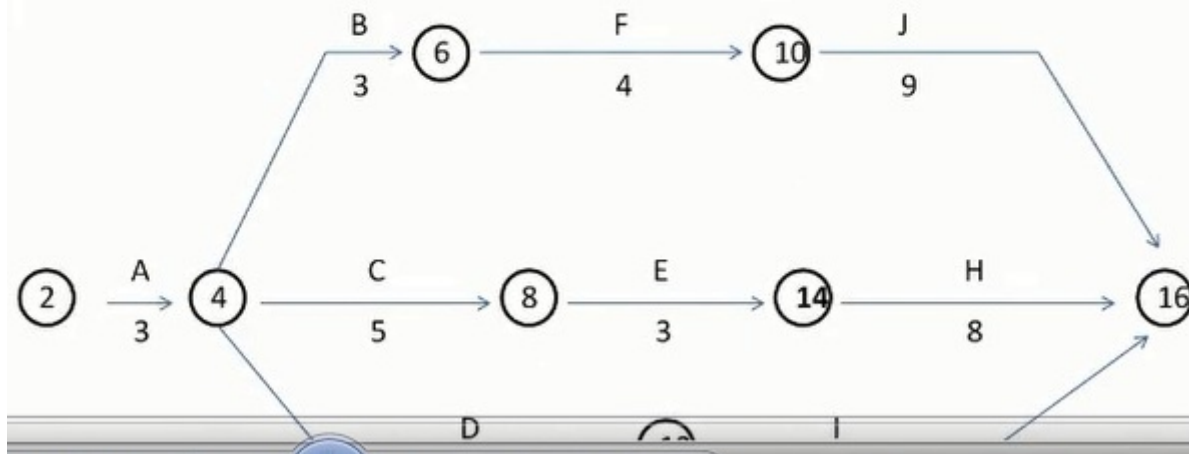
Question 2

Question Type: MultipleChoice

What is the free float for Activity F?

Refer to the following table and diagram to answer the following questions. Consider this to be the entire network. The diagram is incomplete. This table represents activities, predecessors and durations for a hazardous waste incineration facility:

Activity	Description	Predecessors	Duration (months)
A	Develop information for public hearings	-	3
B	Hold public hearings	A	3
C	Develop draft plans and specifications	A	5
D	Contact stakeholders and others	A	7
E	Obtain permits	B, C	3
F	Order equipment for facility	B	4
G	Procure and prepare land.	B	6
H	Construct facility	D, E, F & G	8
I	Approval of operating procedures	D	6
J	Install equipment, staff, faculty	F	9



Options:

A- 3 months.

B- 0 months.

C- 1 months.

D- 2 month.

Answer:

B

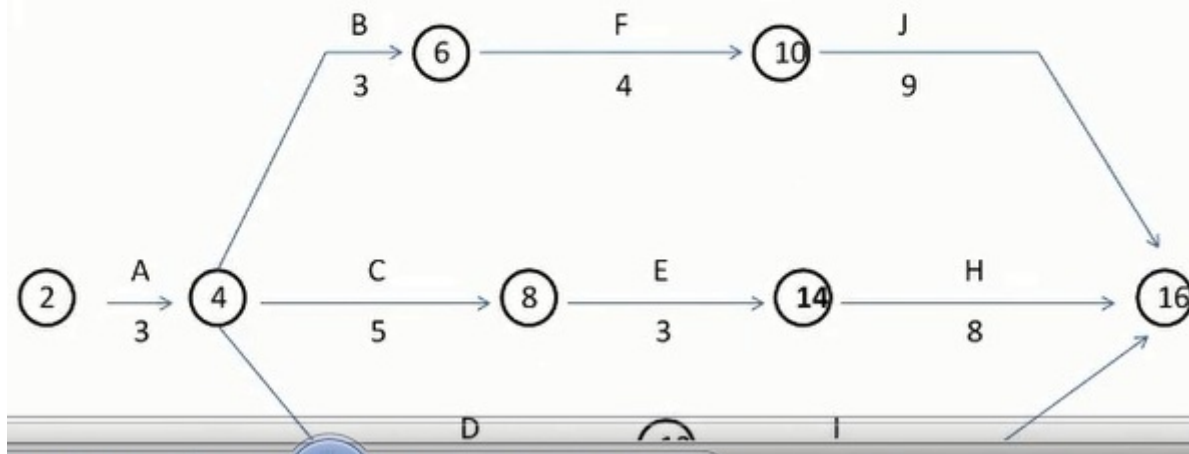
Question 3

Question Type: MultipleChoice

The activity with the most total float is:

Refer to the following table and diagram to answer the following questions. Consider this to be the entire network. The diagram is incomplete. This table represents activities, predecessors and durations for a hazardous waste incineration facility:

Activity	Description	Predecessors	Duration (months)
A	Develop information for public hearings	-	3
B	Hold public hearings	A	3
C	Develop draft plans and specifications	A	5
D	Contact stakeholders and others	A	7
E	Obtain permits	B, C	3
F	Order equipment for facility	B	4
G	Procure and prepare land.	B	6
H	Construct facility	D, E, F & G	8
I	Approval of operating procedures	D	6
J	Install equipment, staff, faculty	F	9



Options:

A- Activity I.

B- Activity C.

C- Activity F.

D- Activity D.

Answer:

A

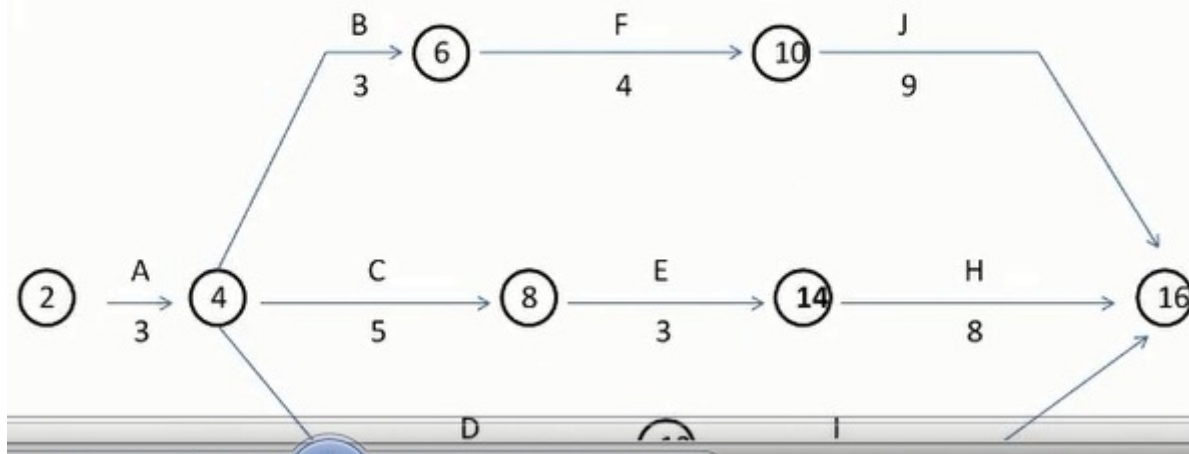
Question 4

Question Type: MultipleChoice

These are the activities on the critical path:

Refer to the following table and diagram to answer the following questions. Consider this to be the entire network. The diagram is incomplete. This table represents activities, predecessors and durations for a hazardous waste incineration facility:

Activity	Description	Predecessors	Duration (months)
A	Develop information for public hearings	-	3
B	Hold public hearings	A	3
C	Develop draft plans and specifications	A	5
D	Contact stakeholders and others	A	7
E	Obtain permits	B, C	3
F	Order equipment for facility	B	4
G	Procure and prepare land.	B	6
H	Construct facility	D, E, F & G	8
I	Approval of operating procedures	D	6
J	Install equipment, staff, faculty	F	9



Options:

A- A, D, & I.

B- A, C, E, & H.

C- A, B, G, & H.

D- A, B, F, & J

Answer:

C

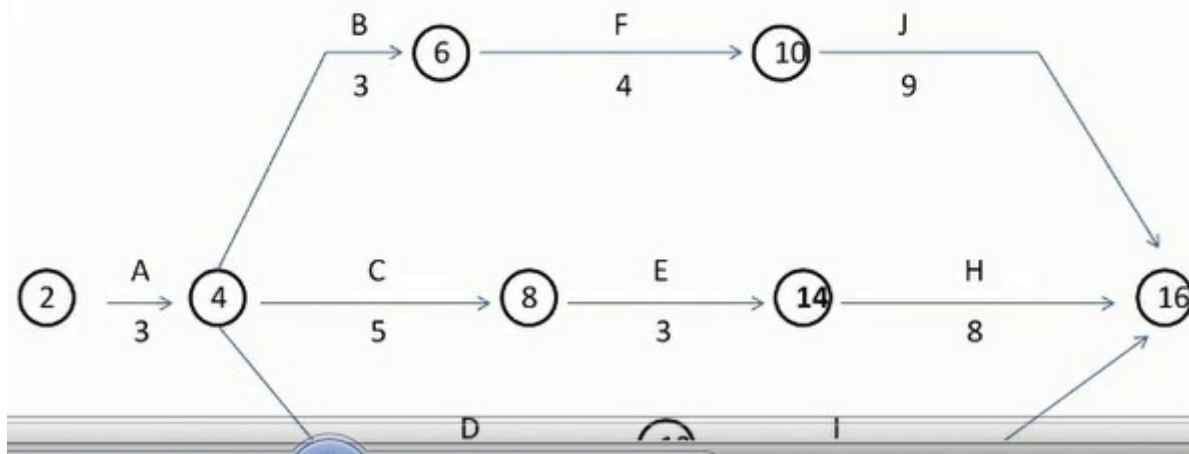
Question 5

Question Type: MultipleChoice

Identify the late finish to develop plans and specs.

Refer to the following table and diagram to answer the following questions. Consider this to be the entire network. The diagram is incomplete. This table represents activities, predecessors and durations for a hazardous waste incineration facility:

Activity	Description	Predecessors	Duration (months)
A	Develop information for public hearings	-	3
B	Hold public hearings	A	3
C	Develop draft plans and specifications	A	5
D	Contact stakeholders and others	A	7
E	Obtain permits	B, C	3
F	Order equipment for facility	B	4
G	Procure and prepare land.	B	6
H	Construct facility	D, E, F & G	8
I	Approval of operating procedures	D	6
J	Install equipment, staff, faculty	F	9



Options:

A- 9 months.

B- 10 months.

C- 8 months.

D- 7 months.

Answer:

A

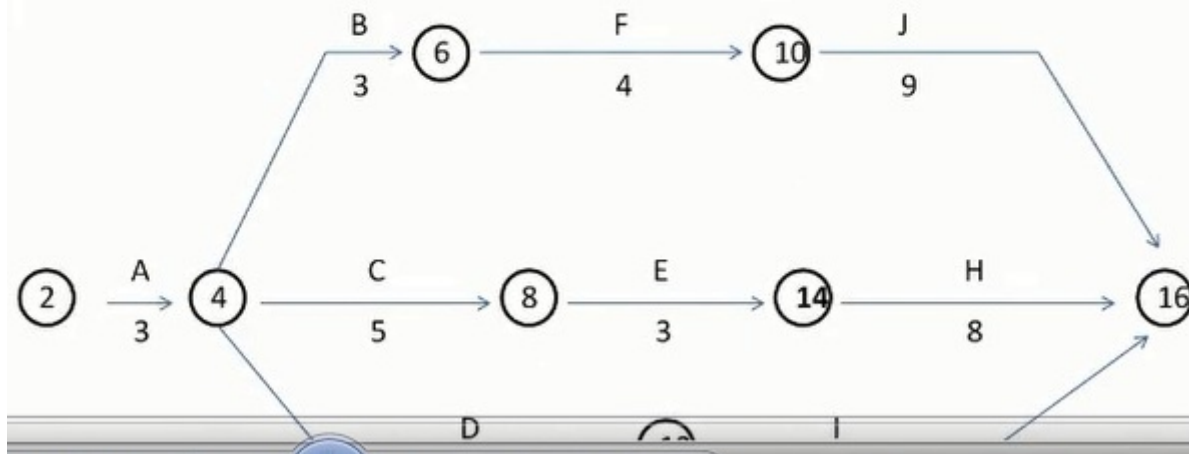
Question 6

Question Type: MultipleChoice

Identify the minimum project duration.

Refer to the following table and diagram to answer the following questions. Consider this to be the entire network. The diagram is incomplete. This table represents activities, predecessors and durations for a hazardous waste incineration facility:

Activity	Description	Predecessors	Duration (months)
A	Develop information for public hearings	-	3
B	Hold public hearings	A	3
C	Develop draft plans and specifications	A	5
D	Contact stakeholders and others	A	7
E	Obtain permits	B, C	3
F	Order equipment for facility	B	4
G	Procure and prepare land.	B	6
H	Construct facility	D, E, F & G	8
I	Approval of operating procedures	D	6
J	Install equipment, staff, faculty	F	9



Options:

A- 20 months.

B- 16 months.

C- 19 months.

D- 21 months.

Answer:

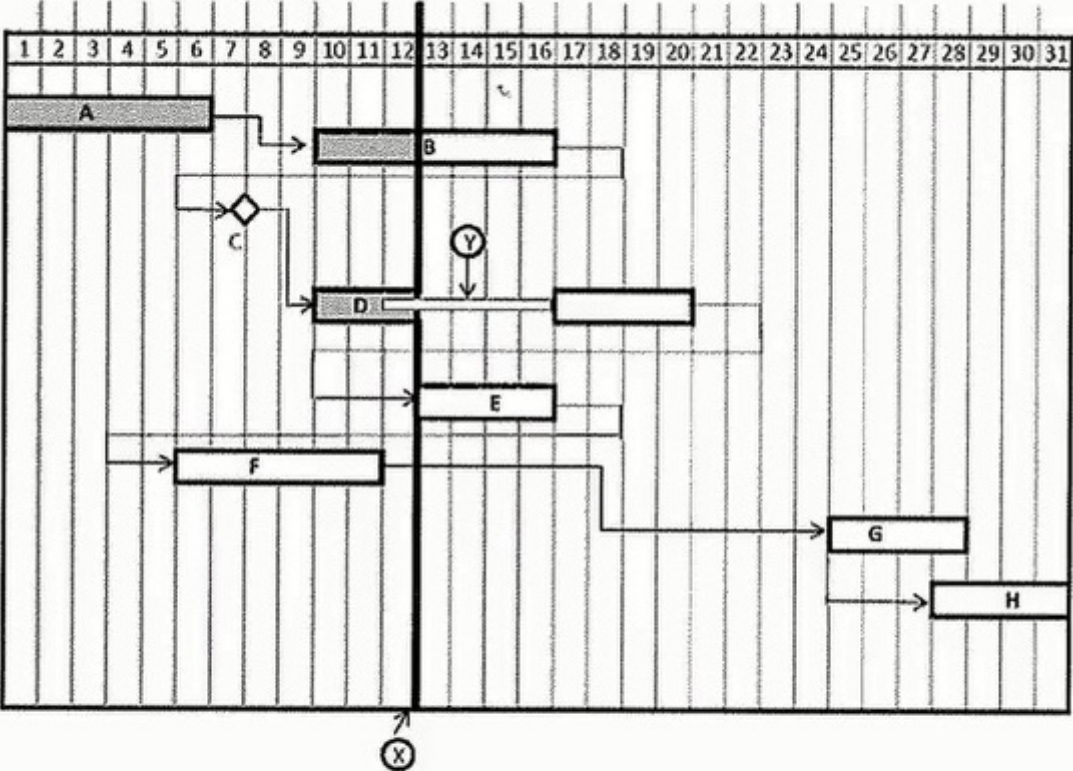
A

Question 7

Question Type: MultipleChoice

Which activity is drawn in the incorrect position?

Refer to the time-scaled network diagram and other information to answer the following questions. Please consider this to be the entire network.



	Original Duration
Activity A	5
Activity B	5
Activity C	0
Activity D	5
Activity E	4
Activity F	3
Activity G	4

Options:

A- Activity G.

B- Activity E.

C- Activity C.

D- Activity D.

Answer:

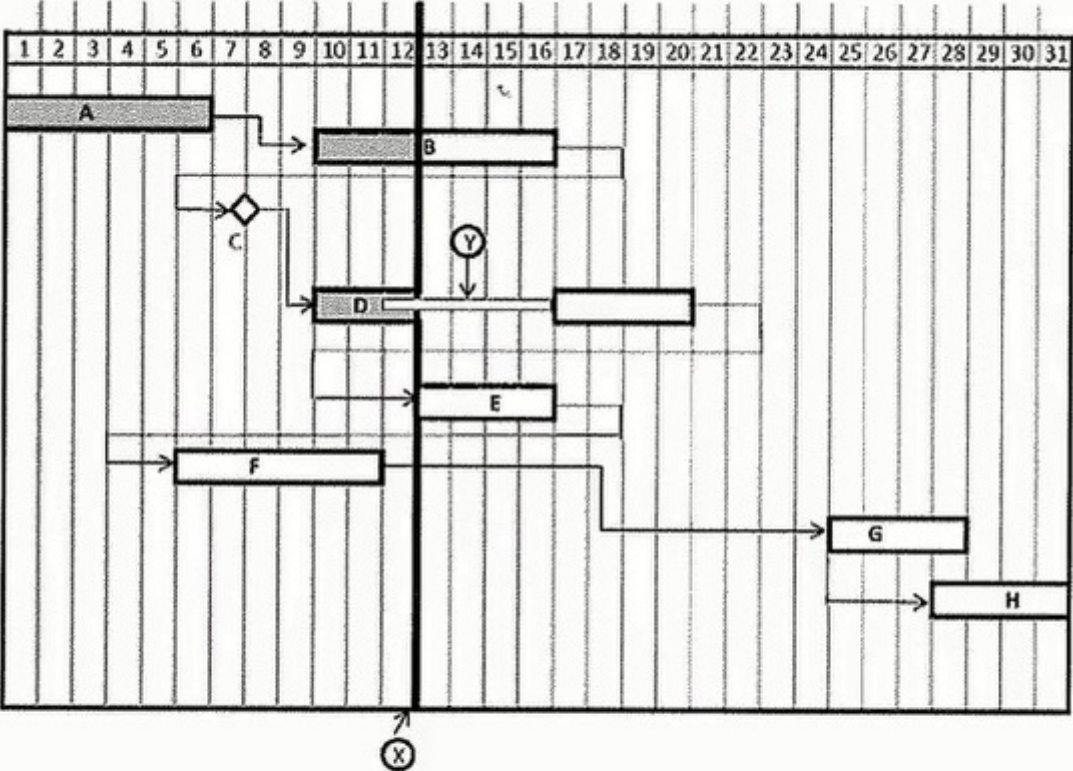
D

Question 8

Question Type: MultipleChoice

What is the actual duration as of the status date or data date of Activity B?

Refer to the time-scaled network diagram and other information to answer the following questions. Please consider this to be the entire network.



	Original Duration
Activity A	5
Activity B	5
Activity C	0
Activity D	5
Activity E	4
Activity F	3
Activity G	4

Options:

A- 7.

B- 3.

C- 0.

D- 4.

Answer:

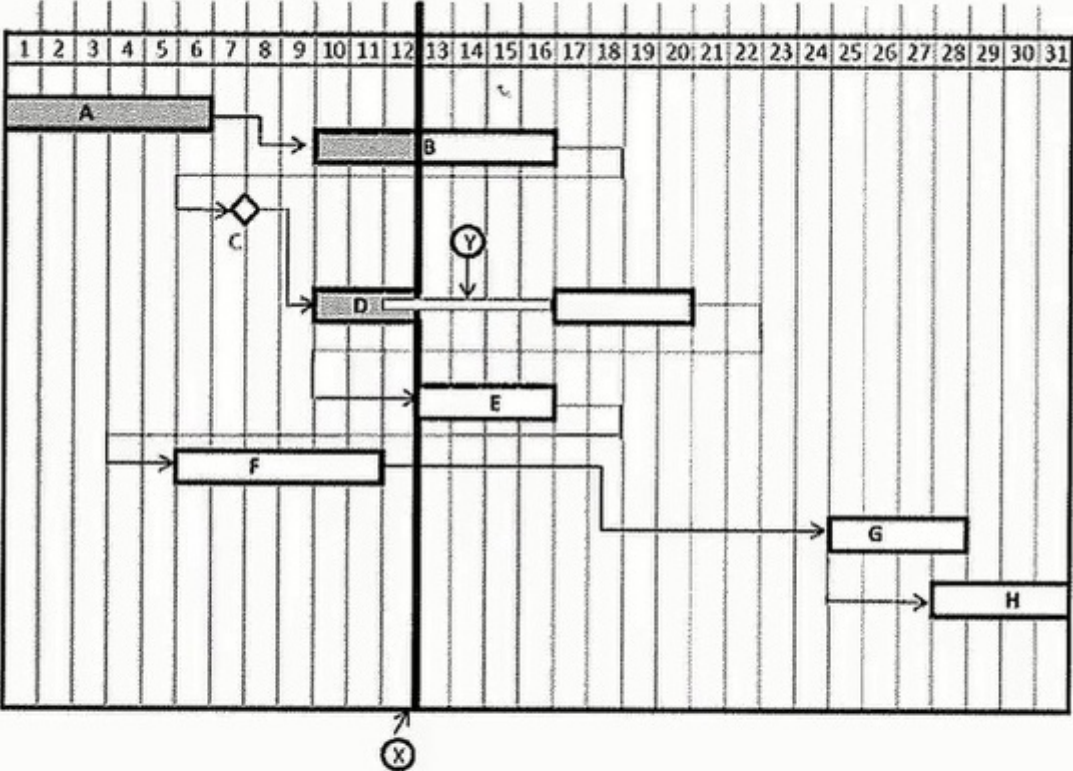
B

Question 9

Question Type: MultipleChoice

What does the narrow band at "Y" represent?

Refer to the time-scaled network diagram and other information to answer the following questions. Please consider this to be the entire network.



	Original Duration
Activity A	5
Activity B	5
Activity C	0
Activity D	5
Activity E	4
Activity F	3
Activity G	4

Options:

- A- Resource limitation period.
- B- A rework period.
- C- Activity inactivity.
- D- You cannot tell with the information supplied.

Answer:

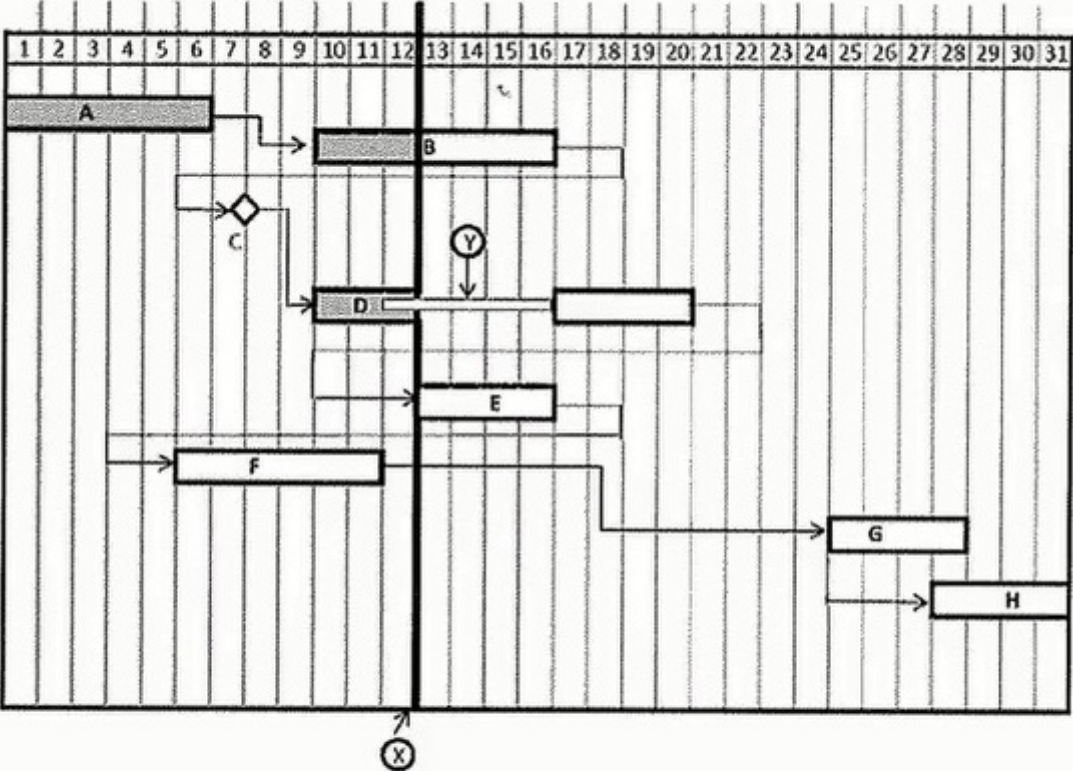
D

Question 10

Question Type: MultipleChoice

What is the relationship depicted between Activity G and Activity H?

Refer to the time-scaled network diagram and other information to answer the following questions. Please consider this to be the entire network.



	Original Duration
Activity A	5
Activity B	5
Activity C	0
Activity D	5
Activity E	4
Activity F	3
Activity G	4

Options:

- A- You cannot tell with the supplied information.
- B- Start-to-start.
- C- Finish-to-start.
- D- Finish-to-finish.

Answer:

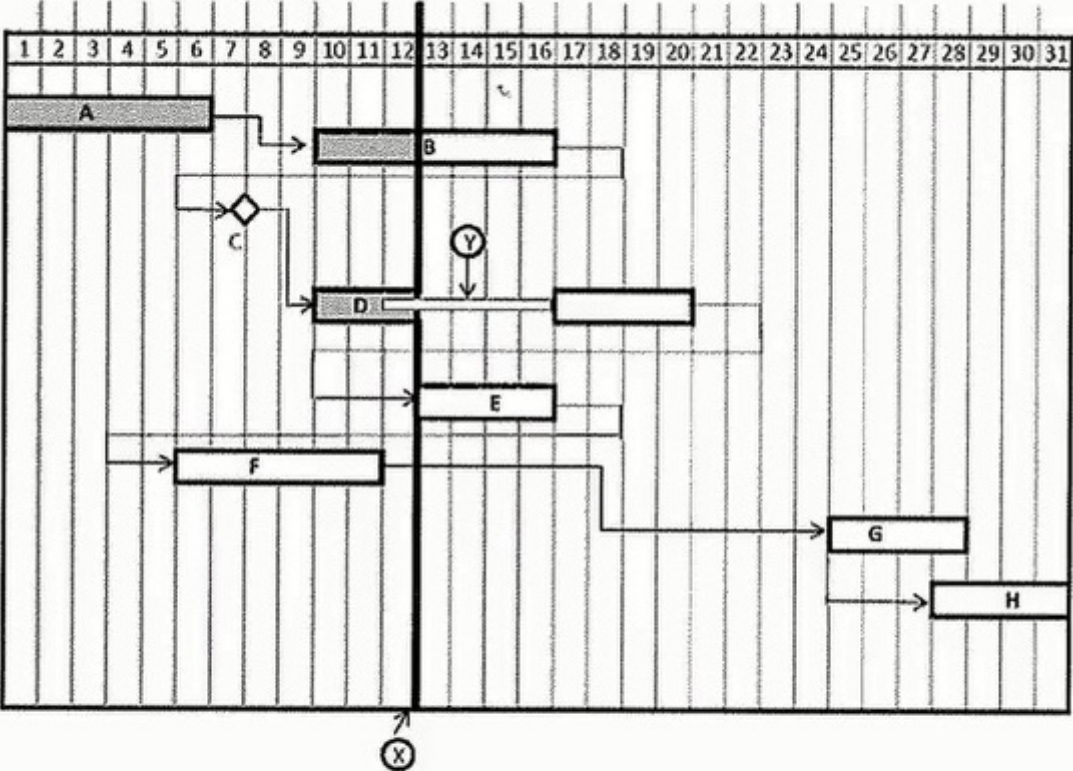
B

Question 11

Question Type: MultipleChoice

What is the remaining work duration of Active D?

Refer to the time-scaled network diagram and other information to answer the following questions. Please consider this to be the entire network.



	Original Duration
Activity A	5
Activity B	5
Activity C	0
Activity D	5
Activity E	4
Activity F	3
Activity G	4

Options:

A- 4.

B- 11

C- 8.

D- 3.

Answer:

A

To Get Premium Files for AACE-PSP Visit

<https://www.p2pexams.com/products/aace-psp>

For More Free Questions Visit

<https://www.p2pexams.com/aace-international/pdf/aace-psp>

