



**Free Questions for *ASDEV01* by *go4braindumps***

**Shared by *Harris* on *24-05-2024***

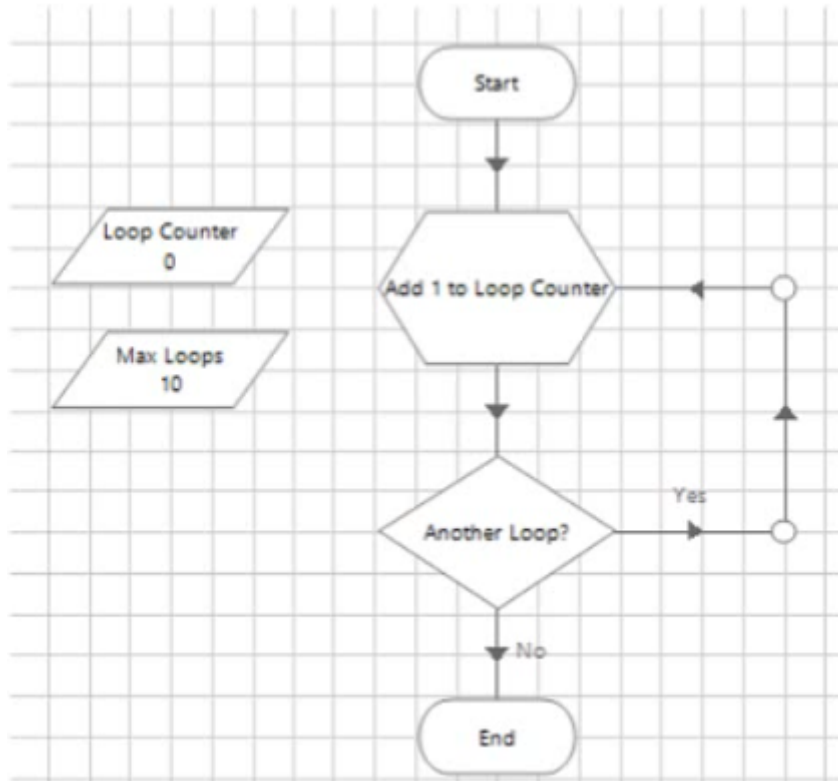
**For More Free Questions and Preparation Resources**

***Check the Links on Last Page***

# Question 1

Question Type: MultipleChoice

Examine the following diagram from a Blue Prism Process:



This is an example of a common looping diagram which you will see within Blue Prism Processes What is the name given for this type of flow diagram?

### Options:

---

- A- Blue Prism Loop stage
- B- Circular Path
- C- Infinite Loop
- D- Layers of Logic

### Answer:

---

B

### Explanation:

---

A circular path is a type of flow diagram that uses links to create a loop in the process flow, which can be repeated until a certain condition is met or an exception is thrown<sup>2</sup>. A circular path typically consists of a decision stage, a loop end stage and a loop start stage<sup>3</sup>. Reference:<sup>2</sup><https://bpdocs.blueprism.com/bp-6-10/en-us/helpProcessFlow.htm><sup>3</sup><https://bpdocs.blueprism.com/bp-6-10/en-us/helpLooping.htm>

## Question 2

---

**Question Type: MultipleChoice**

---

A Blue Prism Process reads data about a customer from an online form which includes their date of birth A Process must determine if the customer is under the age of 18 before processing the customer request

What type of Blue Prism stage would you use to test the customers age?

**Options:**

---

- A- Calculation stage
- B- Business Rule stage
- C- Validation stage
- D- Decision stage

**Answer:**

---

D

**Explanation:**

---

A decision stage is used to evaluate process rules or logic and branch the process flow based on the outcome of the evaluation. A decision stage can have multiple outcomes and can use expressions to compare values or check conditions<sup>1</sup>. In this case, a decision stage can be used to compare the customer's date of birth with the current date and determine if they are under 18 or not.

## Question 3

---

**Question Type:** MultipleChoice

---

What is a Blue Prism Expression?

### Options:

---

- A- The output from a Calculation stage
- B- The output from a Decision stage
- C- It is information provided in a Note stage
- D- A formula used to produce a value

### Answer:

---

D

## **Explanation:**

---

A Blue Prism expression is a formula that can be entered into any stage to produce a value or perform an action. It can use data items, operators, functions and constants to create complex expressions that can manipulate data or control the flow of the process<sup>1</sup>.

Reference: <sup>1</sup><https://bpdocs.blueprism.com/bp-6-10/en-us/helpCalculationsAndDecisions.htm>

## **Question 4**

---

### **Question Type: DragDrop**

---

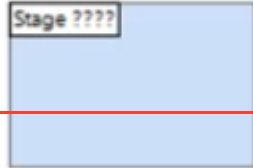
Drag and drop the Blue Prism stage names on the left into the placement boxes (A - E) so that the dropped stage names correspond with the image of the Blue Prism stage beside it:

Process Stage  
Answer:

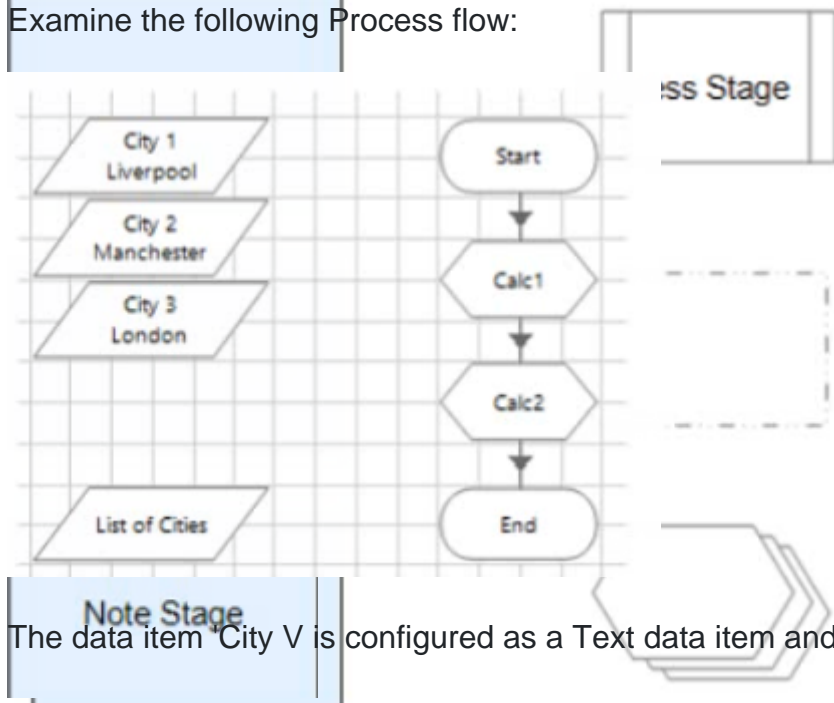


## Question 5

Question Type: Multiple Choice



Examine the following Process flow:



Note Stage  
The data item 'City V' is configured as a Text data item and has an initial value of 'Liverpool'.

The data item 'City 2' is configured as a Text data item and has an initial value of 'Manchester'.

The data item 'City 3\*' is configured as a Text data item and has an initial value of 'London'.

The data item 'List of Cities' is configured as a Text data item and has no initial value.

The 'Calc 1' stage is configured as follows:



Name: Calc1

Description:

Expression

[City 1] & ";" & [City 2]

Validate Evaluate Expression Store Result In  List of Cities

The 'Calc 2' stage is configured as follows:

Calculation Properties

Name: Calc2

Description:

Expression

[City 2] & ";" & [City 3]

Validate Evaluate Expression Store Result In  List of Cities

What will the value of the list of Cities' data item be after the Process flow has run?

### Options:

---

- A- Manchester. London
- B- An Exception will be thrown as a data item with a Text data type cannot store a list of text values
- C- Liverpool Manchester.London

### Answer:

---

C

### Explanation:

---

The calculation stage will append the values of City 1, City 2 and City 3 to the List of Cities data item, separated by spaces. The text data type can store words or phrases as well as numerical identifiers, and it has no character limit if the data is input by another method than manual. Reference: [1https://bpdocs.blueprism.com/bp-7-0/en-us/helpDatatypes.htm](https://bpdocs.blueprism.com/bp-7-0/en-us/helpDatatypes.htm)

## Question 6

---

### Question Type: MultipleChoice

---

Which of the following items can be used in Blue Prism to transmit values between Process Pages?

(Select all items which apply)

### Options:

---

- A- Input Parameters
- B- Lookup Stages
- C- Output Parameters
- D- Calculation Stages
- E- Data Items

### Answer:

---

A, C, E

### Explanation:

---

Input parameters, output parameters and data items can be used to transmit values between process pages by passing or returning values from one page to another<sup>2</sup>. Lookup stages and calculation stages are not used for this purpose, as they are used to retrieve values from collections or perform calculations on values<sup>3</sup>. Reference:<sup>2</sup><https://bpdocs.blueprism.com/bp-6-10/en-us/helpProcessPages.htm><sup>3</sup><https://bpdocs.blueprism.com/bp-6-10/en-us/helpCalculationsAndDecisions.htm>

**To Get Premium Files for ASDEV01 Visit**

**<https://www.p2pexams.com/products/asdev01>**

**For More Free Questions Visit**

**<https://www.p2pexams.com/blue-prism/pdf/asdev01>**

