



Free Questions for I40-420 by dumpsheet

Shared by Griffith on 24-05-2024

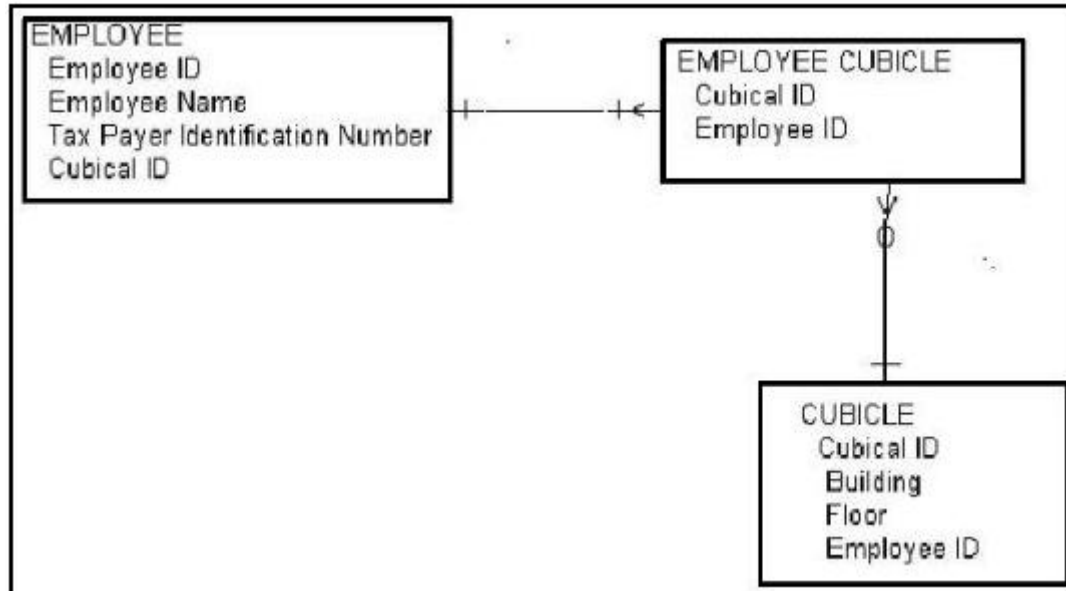
For More Free Questions and Preparation Resources

Check the Links on Last Page

Question 1

Question Type: MultipleChoice

Consider the following diagram.



The business requirement states that an employee must have at least one cubicle, but may have an unlimited number of cubicles assigned. A cubicle can also be occupied by more than one employee at a time. How many total DETs are depicted?

Options:

- A- 4
- B- 6
- C- 8
- D- 10

Answer:

B

Question 2

Question Type: MultipleChoice

Conversion software is developed to convert data from the Account application to the new Relationship Management application. Five logical files in the Account application are referenced by the conversion software to create the new Client Master File in the Relationship Management application. How is the data conversion counted for the development project?

Options:

A- 1 EI

B- 1 EQ, 1 EI

C- 5 EQs, 1 EI

D- 5 EQs, 5 EIs

Answer:

A

Question 3

Question Type: MultipleChoice

The team has been asked to size the software associated with porting the Order Management system from one operating system to a different operating system. The project includes a one-time data conversion activity. Which of the following is true?

Options:

A- FP approach can be used to size both the operating system upgrade and the data conversion activity

B- FP approach can be used to size the operating system upgrade. The data conversion activity cannot be sized using FP approach

C- FP approach can be used for sizing the data conversion activity. FP approach is not suitable for sizing the operating system upgrade

D- FP approach cannot be applied to size either the operating system upgrade or the one-time data conversion activity

Answer:

C

Question 4

Question Type: MultipleChoice

During the requirements phase for a new application, the user identified 3 logical groups of data. During the construction phase, our database technicians combined the 3 logical groups of data into 1 physical table. How many ILFs would be counted?

Options:

- A-** 3 ILFs during requirements phase, 3 ILFs during construction phase
- B-** 3 ILFs during requirements phase, 1 ILFs during construction phase
- C-** 1 ILF during requirements phase, 1 ILFs during construction phase
- D-** 1 ILF during requirements phase, 0 ILFs during construction phase

Answer:

A

Question 5

Question Type: MultipleChoice

An application originally valued at 327 FP was enhanced. The enhancement added 3 low EQs, 2 low EIs, 2 high EOs, and changed 3 low ILFs. What is the enhancement project functional size?

Options:

A- 29

B- 50

C- 356

D- 377

Answer:

B

Question 6

Question Type: MultipleChoice

An enhancement project adds one new attribute to each of 10 ILFs. The 10 EIs that maintain these ILFs also include the new attribute. Before the enhancement, the ILFs each had 1 RET and 15 DETs, and the EIs each had 1 FTR and 15 DETs. What is the EFP for the enhancement project?

Options:

A- 100

B- 110

C- 130

D- 140

Answer:

B

Question 7

Question Type: MultipleChoice

An application originally valued at 327 FP was enhanced. The enhancement added 3 low EQs, 2 low EIs and 2 high EOs. What is the AFPA?

Options:

- A- 29
- B- 32
- C- 356
- D- 359

Answer:

C

Question 8

Question Type: MultipleChoice

In an enhancement project an EI is counted as changed because an additional attribute is sent across the boundary. Before the enhancement the EI referenced 2 FTRs and 15 attributes crossed the boundary. How many FPs are measured for the enhancement project?

Options:

- A- 4 FP
- B- 6 FP
- C- 3 FP
- D- 7 FP

Answer:

B

Question 9

Question Type: MultipleChoice

An enhancement project involves changing validations in the interest calculation module, adding users to the access permissions, and changing the operating system (and all related system calls in the system) from version 1.0 to the higher version 2.0 to improve system

performance. Which functions would be sized from a FP perspective?

Options:

- A- Interest calculation, adding permission, changing the operating system
- B- Interest calculation, adding permissions
- C- Interest calculation
- D- Adding permissions

Answer:

C

Question 10

Question Type: MultipleChoice

A Human Resources application screen allows the user to control three aspects of report processing: sort sequence, printer port, and the choice of generating a DVD. The options within the three aspects are mutually exclusive. A confirmation message is sent back to the user after the control information has been saved in the Parameter ILF. How many DETs are counted?

Job Location Report Request			
Sort	Printer	Generate DVD	
<input type="checkbox"/> By Site	<input type="checkbox"/> LPT1	<input type="checkbox"/> Yes	<input type="radio"/> OK
<input type="checkbox"/> By Job Type	<input type="checkbox"/> LPT2	<input type="checkbox"/> No	<input type="radio"/> Cancel
	<input type="checkbox"/> Network		

Options:

A- 10

B- 9

C- 5

D- 4

Answer:

C

Question 11

Question Type: MultipleChoice

A Purchasing application prior to the enhancement had 204 FP. An enhancement project contributed the following:

Added FP = 12

Change Before FP = 30

Deleted FP = 0

Change After FP = 31

Conversion FP = 0

What is the EFP?

Options:

A- 13

B- 42

C- 43

D- 236

Answer:

C

To Get Premium Files for I40-420 Visit

<https://www.p2pexams.com/products/i40-420>

For More Free Questions Visit

<https://www.p2pexams.com/ifpug/pdf/i40-420>

