



Free Questions for JN0-682 by actualtestdumps

Shared by Thompson on 24-05-2024

For More Free Questions and Preparation Resources

Check the Links on Last Page

Question 1

Question Type: MultipleChoice

A VTEP requires which two interfaces? (Choose two.)

Options:

- A- a logical interface for a Layer 3 network
- B- a physical interface for a Layer 3 network
- C- a logical interface for a Layer 2 network
- D- a physical interface for a Layer 2 network

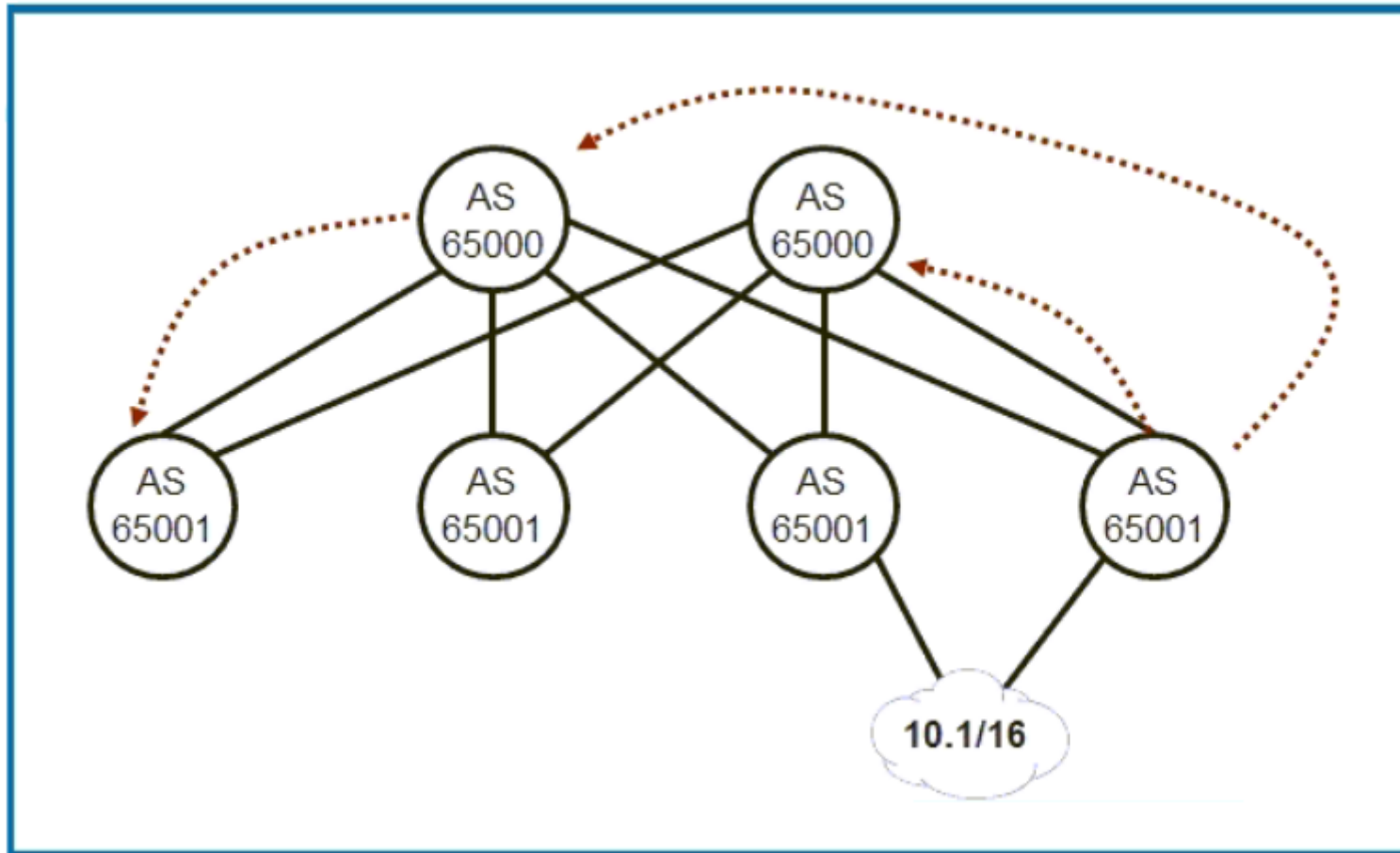
Answer:

C, D

Question 2

Question Type: MultipleChoice

Exhibit.



You choose the EBGP fabric design as shown in the exhibit. In addition to a load-balancing policy, you want to ensure that the 10.1/16 prefix is sent to the leaf nodes.

Which two commands on the spine will accomplish this task? (Choose two.)

Options:

A- loops 2

B- as-override

C- add-path send

D- advertise-peer-as

Answer:

B, D

Question 3

Question Type: MultipleChoice

Which two statements about a DHCP relay in an EVPN-VXLAN fabric are correct? (Choose two.)

Options:

- A- The DHCP client and the DHCP server can reside in different routing instances.
- B- The DHCP client and the DHCP server must reside in the same routing instance.
- C- Anycast gateway addressing is not supported.
- D- Virtual gateway and anycast gateway addressing are both supported.

Answer:

A, D

Question 4

Question Type: MultipleChoice

You are deploying your data center switches using ZTP.

A brand new QFX5120 switch has been booted for the first time. It is failing to upgrade to the desired Junos OS version.

In this scenario, which two actions would you take to troubleshoot this problem? (Choose two.)

Options:

- A-** Ensure that the correct Juniper default FTP password is defined under the DHCP configuration option and restart the FTP service.
- B-** Log in to the switch through the console and look for log messages that might indicate the cause of the issue.
- C-** Ensure that anonymous login is enabled on the FTP server and that the FTP service is running.
- D-** From the configuration mode, issue the load factory-default and commit commands to re-initiate the ZTP request.

Answer:

B, C

Question 5

Question Type: MultipleChoice

Refer to the exhibit.



```

{master:0}[edit vlans]
user@leaf1# show
v100 {
  vlan-id 10;
  vxlan {
    vni 5010;
    encapsulate-inner-vlan;
    decapsulate-accept-inner-vlan
  }
}
  
```

Which statement is correct about the highlighted code segment and VXLAN frame shown in the exhibit?

Options:

A- This statement is optional and keeps the VLAN header in the Original L2 Frame, if included.

- B-** This statement is optional and removes the VLAN header in the Original L2 Frame, if included.
- C-** This statement is required and removes the VLAN header in the Original L2 Frame, if included.
- D-** This statement is required and keeps the VLAN header in the Original L2 Frame, if included.

Answer:

A

Question 6

Question Type: MultipleChoice

You must advertise reachability between two firewalls with unique IP subnets that terminate security services through your EVPN-VXLAN environment.

In this scenario, which EVPN route type should you enable to accomplish this task?

Options:

A- type-4

B- type-2

C- type-5

D- type-3

Answer:

B

Question 7

Question Type: MultipleChoice

You are implementing a second data center and must have some of your VLANs active in both data centers. You must provide high availability, fast reconvergence, and avoid tromboning traffic on these VLANs.

In an over-the-top DCI strategy, which two statements are correct? (Choose two.)

Options:

A- A single type-5 route for the subnet must be advertised from both data centers.

B- The VLAN ID and VNI must be the same in both data centers for these VLANs.

C- The VLAN ID must be the same in both data centers, but the VNI can be different.

D- A type-5 route for each host must be advertised from the data center where the host resides.

Answer:

A, B

Question 8

Question Type: MultipleChoice

Refer to the exhibit.

```
{master:0}
user@switch> show evpn database origin remote
Instance: default-switch
VLAN  DomainId  MAC address      Active source      Timestamp          IP address
-----
5010   5010         00:0c:29:08:04:a0 00:21:22:23:24:25:26:27:28:22 Dec 07 18:13:04 10.1.1.2
5010   5010         00:0c:29:e8:b7:39 192.168.100.11     Dec 07 17:35:04 10.1.1.1
```

Referring to the exhibit, which two statements are correct in a seamless EVPN-VXLAN stitching DCI design? (Choose two.)

Options:

- A-** The 00:21:22:23:24:25:26:27:28:22 value represents the interconnect ESI.
- B-** The 10.1.1.2 host is reachable in a remote data center POD.
- C-** The 10.1.1.1 host is reachable in a remote data center POD.
- D-** The 00:21:22:23:24:25:26:27:28:22 value represents the local ESI.

Answer:

A, C

Question 9

Question Type: MultipleChoice

What are three functions supported by the Contrail Command user interface?

Options:

- A-** Integrated syslog collector

- B-** Enabling VM-to-BMS bridging
- C-** Configuring management domains
- D-** Onboarding of an IP fabric
- E-** Creating virtual network

Answer:

A, C, E

Explanation:

The Contrail Command user interface supports various functions including configuring management domains and creating virtual networks. It provides an integrated platform for managing and configuring network resources in a centralized manner.

Juniper Networks - Contrail Networking Documentation

Question 10

Question Type: MultipleChoice

What are three advantages of using MPLS for data center interconnects? (Choose two.)

Options:

- A-** Dedicated MPLS backbones for Layer 1 and Layer 3 DCIs
- B-** Any to any connectivity
- C-** Dedicated connections between customer sites
- D-** Sub 50 ms failover times
- E-** Traffic engineering

Answer:

B, D, E

Explanation:

Any to any connectivity is a key advantage of using MPLS for data center interconnects (DCIs). It allows for flexible and efficient connectivity options between various data center locations.

Traffic engineering is another significant advantage. MPLS allows for the control and optimization of traffic flows within the network, providing enhanced performance and efficient use of network resources

Question 11

Question Type: MultipleChoice

You are asked to deploy 20 QFX Series devices using ZTP. Each QFX5100 requires FTP server. In this scenario, which two components must you configure on the DHCP Server? (Choose two.)

Options:

- A- The MAC address of the FTP server
- B- The IP address of the FTP server
- C- The MAC address of each QFX5100
- D- The MAC address of each QFX5100

Answer:

B, D

Explanation:

B) The IP address of the FTP server must be specified so that the QFX Series devices know where to retrieve their configuration files.

D) The MAC address of each QFX5100 is necessary to ensure that each switch receives the correct configuration file. This can be specified in the DHCP server to map each MAC address to its corresponding configuration file.

To Get Premium Files for JN0-682 Visit

<https://www.p2pexams.com/products/jn0-682>

For More Free Questions Visit

<https://www.p2pexams.com/juniper/pdf/jn0-682>

