



**Free Questions for 4A0-102 by dumpshq**

**Shared by Trujillo on 24-05-2024**

**For More Free Questions and Preparation Resources**

**Check the Links on Last Page**

## Question 1

---

**Question Type:** MultipleChoice

---

Which of the following regarding the withdrawal of routes from one BGP speaker to another is TRUE?

### Options:

---

- A- An update message is used. Only a single prefix can be withdrawn at a time.
- B- An update message is used. Multiple prefixes can be withdrawn at a time.
- C- A withdraw message is used. Only a single prefix can be withdrawn at a time.
- D- A withdraw message is used. Multiple prefixes can be withdrawn at a time.

### Answer:

---

B

## Question 2

---

**Question Type:** MultipleChoice

---

Which of the following is TRUE if the local state of BGP is OpenConfirm?

**Options:**

---

- A- The local system has received a Keepalive message and is ready to exchange updates.
- B- The local system is exchanging Update messages with its neighbor.
- C- The local system has sent a Keepalive message to its neighbor and is waiting to receive one back.
- D- The local system has sent an Open message to its neighbor and is waiting to receive one back.

**Answer:**

---

C

## Question 3

---

**Question Type: MultipleChoice**

---

Which of the following is NOT a BGP message type?

**Options:**

---

- A- Route-Refresh
- B- OpenSent
- C- Notification
- D- Update
- E- Keepalive

**Answer:**

---

B

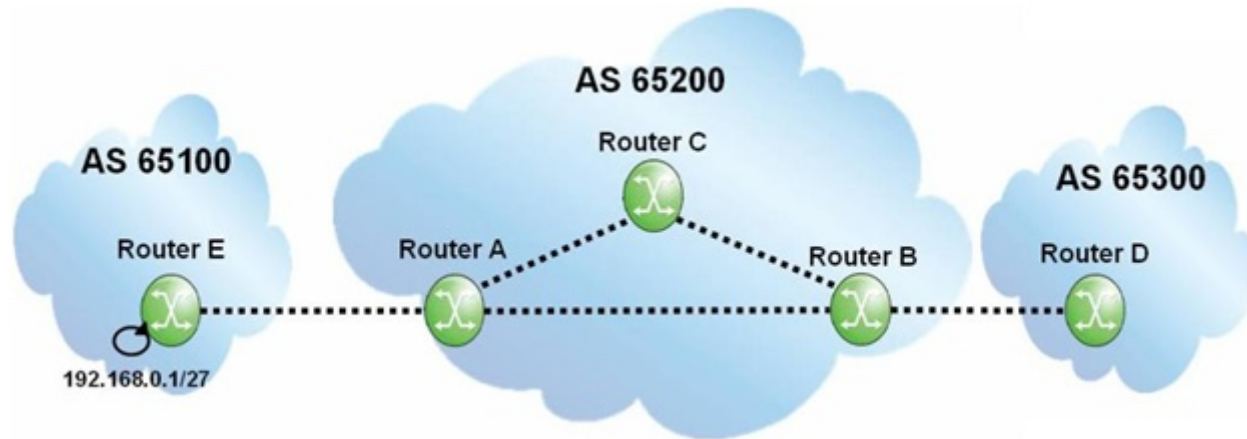
## Question 4

---

**Question Type: MultipleChoice**

---

Click the exhibit.



Assuming that none of the routers within AS 65200 is configured with next-hop-self", what will the BGP update for the 192.168.0.1/27 prefix contain when it arrives at router B?

### Options:

---

- A- AS Path of 65200 65100, Next Hop of router A
- B- AS Path of 65200 65100, Next Hop of router E
- C- AS Path of 65100, Next Hop of router E
- D- AS Path of 65100, Next Hop of router A

### Answer:

---

C

## Question 5

---

**Question Type:** MultipleChoice

---

Which of the following routes is NOT considered an internal route?

### Options:

---

- A- A route received from a BGP peer within the same AS
- B- A route originated by a router in a different cluster of the same AS
- C- A route received from a BGP peer from a different member AS of a confederation.
- D- A route received from a BGP peer from the same member AS of a confederation.

### Answer:

---

C

## Question 6

---

**Question Type:** MultipleChoice

---

Which of the following statements regarding BGP FRR is FALSE?

**Options:**

---

- A- The router must receive several BGP routes to compute a backup path.
- B- BGP FRR can be triggered by BFD
- C- The backup path can use the same next hop as the primary path.
- D- BGP peer-tracking can be used to improve BGP FRR failure detection times.

**Answer:**

---

C

**To Get Premium Files for 4A0-102 Visit**

**<https://www.p2pexams.com/products/4a0-102>**

**For More Free Questions Visit**

**<https://www.p2pexams.com/nokia/pdf/4a0-102>**

