



Free Questions for 4A0-104 by dumpssheet

Shared by Coleman on 09-08-2024

For More Free Questions and Preparation Resources

Check the Links on Last Page

Question 1

Question Type: MultipleChoice

Click the exhibit.

```
R1# show router 100 fib 1
=====
FIB Display
=====
Prefix                               Protocol
  NextHop
-----
10.1.5.0/24                           [ ]
  10.1.5.0 (R1-R5)
10.6.4.0/24                           [ ]
  10.10.10.4 (VPRN Label:131065 Transport:LDP)
10.10.10.5/32                         [ ]
  10.1.5.5 Indirect (R1-R5)
10.10.10.6/32                         [ ]
  10.10.10.4 (VPRN Label:131065 Transport:LDP)
192.168.10.0/24                       [?]
  10.1.5.5 Indirect (R1-R5)
192.168.20.0/24                      [ ]
  10.10.10.4 (VPRN Label:131065 Transport:LDP)
-----
Total Entries : 6
```

Based on the output from PE router R1 about VPRN 100, by which protocol was 192.168.10.0/24 learned?

Options:

- A- BGP
- B- MP-BGP
- C- LDP
- D- MPLS

Answer:

A

Explanation:

Topic 4, Volume D

Question 2

Question Type: MultipleChoice

Which of the following about the VPRN data plane is TRUE?

Options:

- A- A packet receives a service label and a transport label at the ingress PE.
- B- A packet has its service label swapped at each P router.
- C- The egress PE pops the service label, and the transport label is forwarded.
- D- The service label is popped by the remote CE.

Answer:

A

Question 3

Question Type: MultipleChoice

On an Nokia 7750 SR, the OAM command 'svc-ping' can be used with options 'bcal-sdp' and 'remote-sdp'. Which of the following is TRUE?

Options:

- A- 'local-sdp' and 'remote-sdp' indicate that all services using these SDPs are pinged.

- B-** 'local-sdp' and remote-sdp' indicate that pings are initiated from both local and remote routers.
- C-** Both 'local-sdp' and 'remote-sdp' take parameters to specify which SDPs are used for the test.
- D-** 'local-sdp' indicates that the ping is sent in-band, and remote-sdp' indicates the return ping is in-band.

Answer:

D

Question 4

Question Type: MultipleChoice

What is the minimum Ethernet physical network MTU required for a Layer 2 service on an MPLS encapsulated SDP with a service MTU of 1500?

Options:

- A-** 1500
- B-** 1508
- C-** 1514

D- 1522

Answer:

D

Question 5

Question Type: MultipleChoice

Which of the following about the Nokia 7750 SR's sdp-ping utility is FALSE?

Options:

- A-** It tests uni-directional or round-trip in-band connectivity.
- B-** It tests the reachability of hosts that are using an SDP.
- C-** It tests the reachability of the far-end IP address of an SDP through its tunnel.
- D-** It can be used by specifying only an SDP ID.

Answer:

B

Question 6

Question Type: MultipleChoice

Which one of the following items CANNOT be used as a mirror source on an Nokia 7750 SR?

Options:

A- IP filter

B- MAC filter

C- Egress label

D- Ingress label

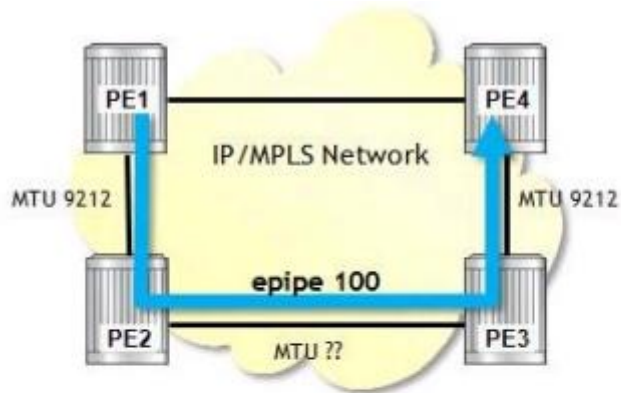
Answer:

C

Question 7

Question Type: MultipleChoice

Click the exhibit.



```
PE1# oam sdp-mtu 4 size-inc 1550 1570 step 1
Size      Sent      Response
-----
1550      .          Success
1551      .          Success
1552      .          Success
1553      .          Success
1554      .          Success
1555      .          Success
1556      .          Success
1557      ...       Request Timeout

Maximum Response Size: 1556
```

E-pipe 100 is using an SDP with an LSP that uses the path shown (PE1-PE2-PE3-PE4). Based on the OAM command output, which of the following is FALSE?

Options:

- A-** The E-pipe can support a maximum MTU size of 1578.
- B-** The ports of the link PE2-PE3 have an MTU of 1578.
- C-** An svc-ping of the E-pipe will succeed.
- D-** If the step size was 2, the maximum response size would be the same.

Answer:

A

To Get Premium Files for 4A0-104 Visit

<https://www.p2pexams.com/products/4a0-104>

For More Free Questions Visit

<https://www.p2pexams.com/nokia/pdf/4a0-104>

