



Free Questions for 4A0-106 by certsinside

Shared by Chase on 24-05-2024

For More Free Questions and Preparation Resources

Check the Links on Last Page

Question 1

Question Type: MultipleChoice

Which of the following about inter-AS model A VPRN is FALSE?

Options:

- A- It requires the configuration of back-to-back VRFs between ASBR routers in different autonomous systems
- B- It is the most scalable of the Inter-AS models.
- C- Most routers that support VPRN functionality support model A by default.
- D- It uses conventional eBGP to distribute unlabeled IPv4 routes between ASBR routers in different autonomous systems.

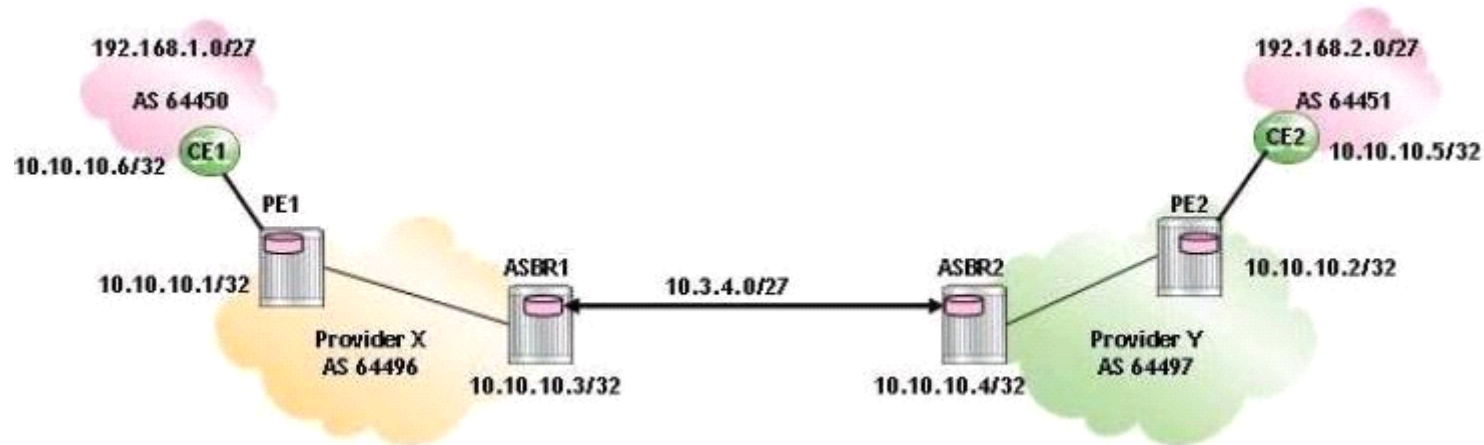
Answer:

B

Question 2

Question Type: MultipleChoice

Click the exhibit.



For the inter-AS model A VPRN shown, which of the following about the route advertisement of 192.168.1.0/27 is FALSE?

Options:

- A- PE1 advertises 64496:1:192.168.1.0/27 route update to ASBR1.
- B- PE2 advertises 192.168.1.0/27 route update to CE2.
- C- ASBR1 advertises 64496:1:192.168.1.0/27 route update to ASBR2.
- D- ASBR2 advertises 64497:1:192.168.1.0/27 route update to PE2.

Answer:

C

Question 3

Question Type: MultipleChoice

Click the exhibit.

```
*A:ASBR1# show router 10 bgp summary
=====
BGP Router ID:10.10.10.3      AS:64496      Local AS:64496
=====
BGP Admin State      : Up          BGP Oper State      : Up
Total Peer Groups    : 1           Total Peers          : 1
Total BGP Paths       : 5           Total Path Memory    : 660
Total IPv4 Remote Rts : 3           Total IPv4 Rem. Active Rts : 3
Total IPv6 Remote Rts : 0           Total IPv6 Rem. Active Rts : 0
Total Suppressed Rts  : 0           Total Hist. Rts      : 0
Total Decay Rts       : 0
=====
BGP Summary
=====
Neighbor
      AS Pkt Rcvd InQ  Up/Down  State|Rcv/Act/Sent (Addr Family)
      Pkt Sent OutQ
-----
10.3.4.4
      -----      106      0 00h50m09s 3/3/3 (IPv4)
                        104      0
=====
```

The displayed output is from an ASBR supporting an inter-AS model A VPRN. Which of the following statements about this output is TRUE?

Options:

- A- The neighbor shown is an ASBR router.
- B- The address family between the peers should be VPN-IPv4 instead of IPv4.
- C- The neighbor address cannot be the interface address 10.3.4.4.
- D- The omitted AS number under 'BGP summary' must be equal to 64496.

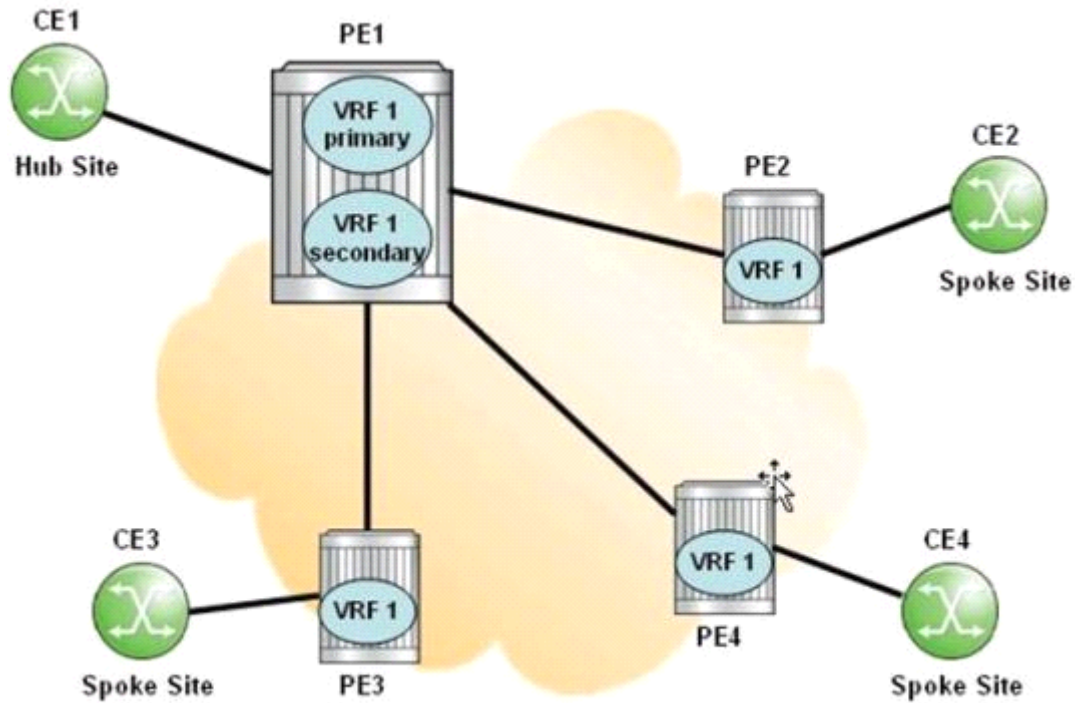
Answer:

A

Question 4

Question Type: MultipleChoice

Click the exhibit.



Which of the following statements about the implementation of the CE hub and spoke topology is FALSE?

Options:

- A- PE1 advertises spoke routes to CE1.
- B- The primary VRF on PE1 is used to route data packets from the hub CE to the spoke sites.
- C- The secondary VRF on PE1 contains routes learned from the spoke sites.

D- Spoke sites do not learn routes from other spoke sites directly.

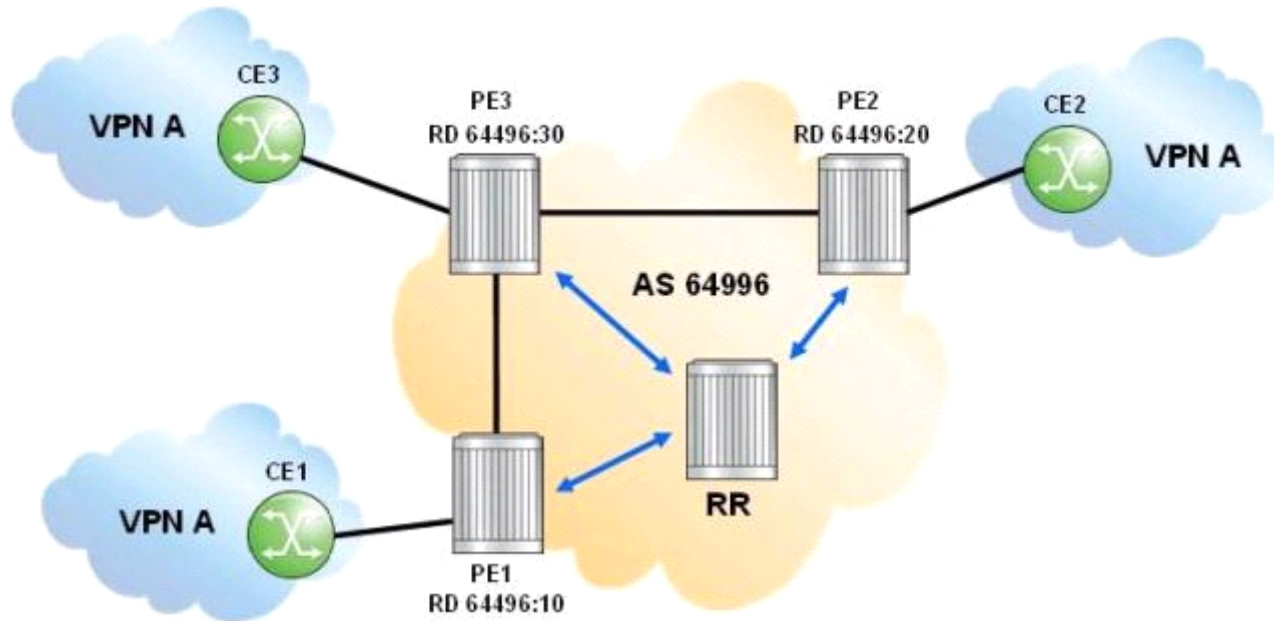
Answer:

C

Question 5

Question Type: MultipleChoice

Click the exhibit.



One Route Distinguisher is assigned per VRF. If CE1 and CE2 advertise prefix 10.1.1.0/24, which of the following statements is FALSE?

Options:

- A- PE1 and PE2 advertise the same VPN route to the route reflector.
- B- The route reflector receives two routes for prefix 10.1.1.0/24; one from PE1 and one from PE2.
- C- The route reflector reflects two routes for prefix 10.1.1.0/24.
- D- PE3 receives two routes and is able to load balance traffic across PE1 and PE2.

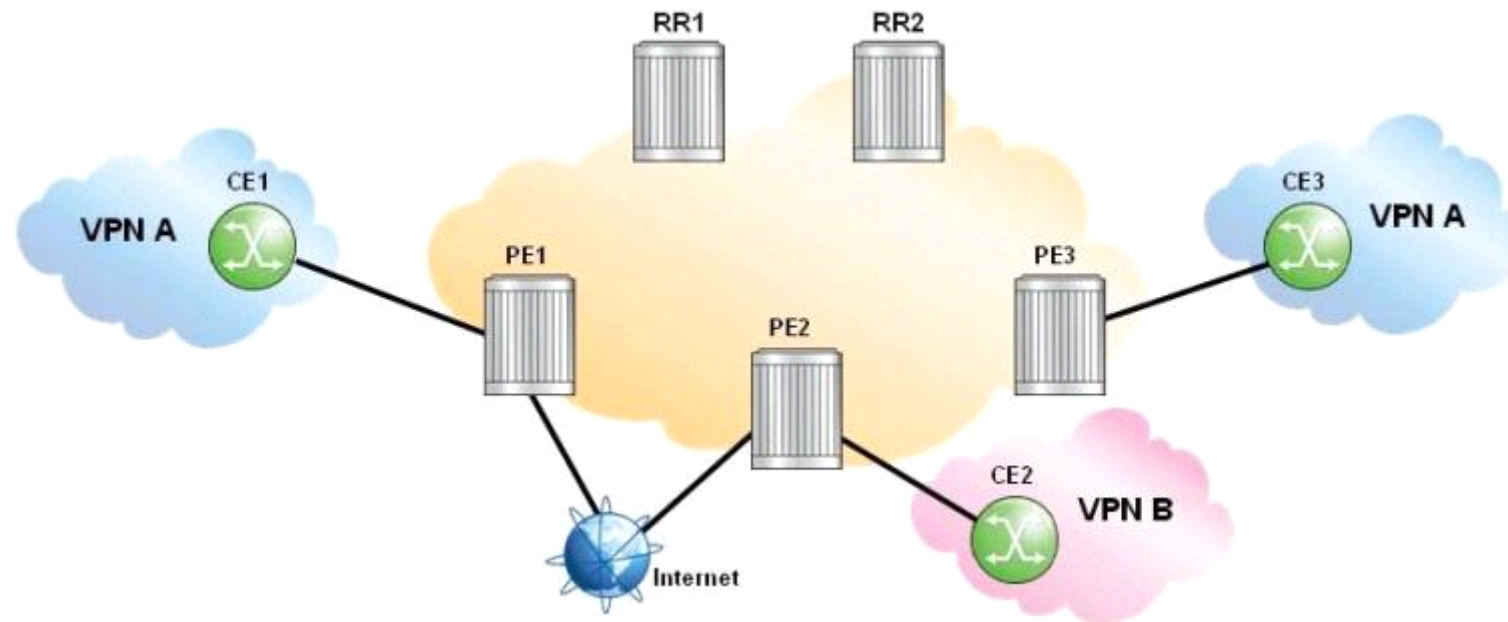
Answer:

A

Question 6

Question Type: MultipleChoice

Click the exhibit.



All sites in the displayed network require Internet access. Route reflector 1(RR1) is used for Internet routes only and route reflector 2(RR2) is used for VPN routes only. Which of the following is FALSE?

Options:

- A-** BGP sessions between RR1 and PE routers support only the IPv4 address family.
- B-** BGP sessions between RR2 and PE routers support only the VPN-IPv4 address family.
- C-** RR2 establishes BGP sessions with PE1, PE2 and PE3.
- D-** RR1 establishes BGP sessions only with PE1 and PE2.

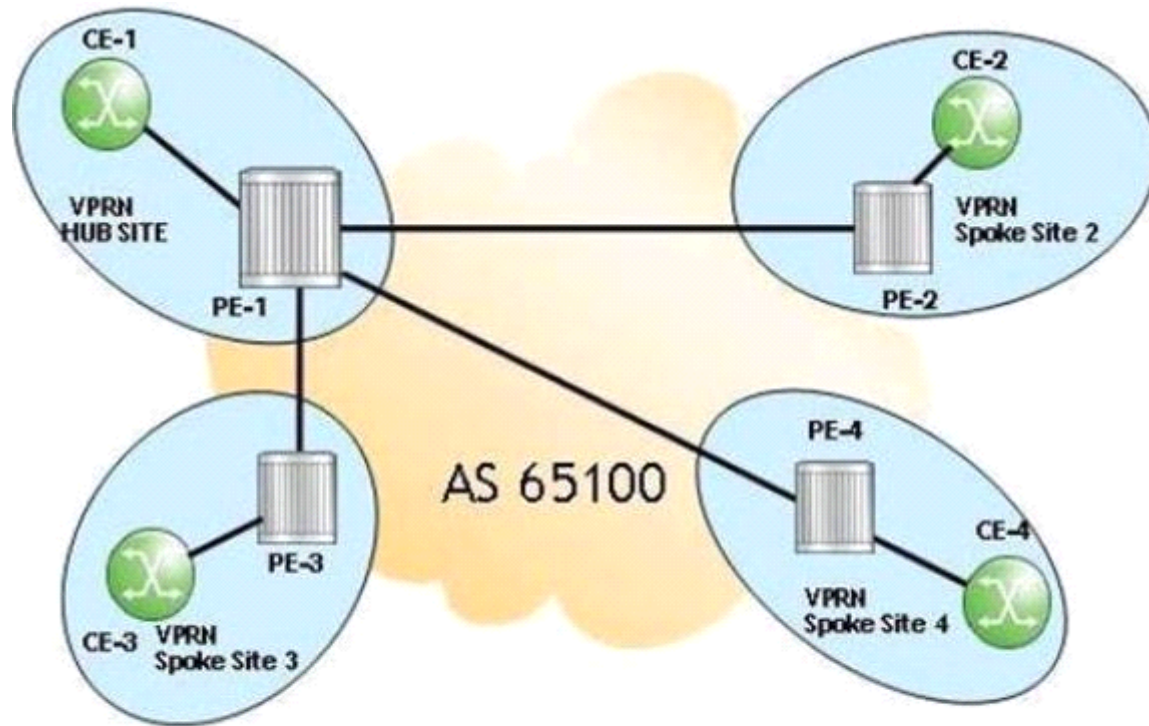
Answer:

D

Question 7

Question Type: MultipleChoice

Click the exhibit.



```
community "Hub_Site" members "target:65100:1"  
community "Spoke_Sites" members "target:65100:2"
```

For the PE hub and spoke VPRN, which communities should be imported under the VPRN service on PE2?

Options:

- A- 'Spoke.Sites' and 'Hub_Site'
- B- 'Hub_Site'
- C- 'Spoke_Sites'
- D- No communities should be imported

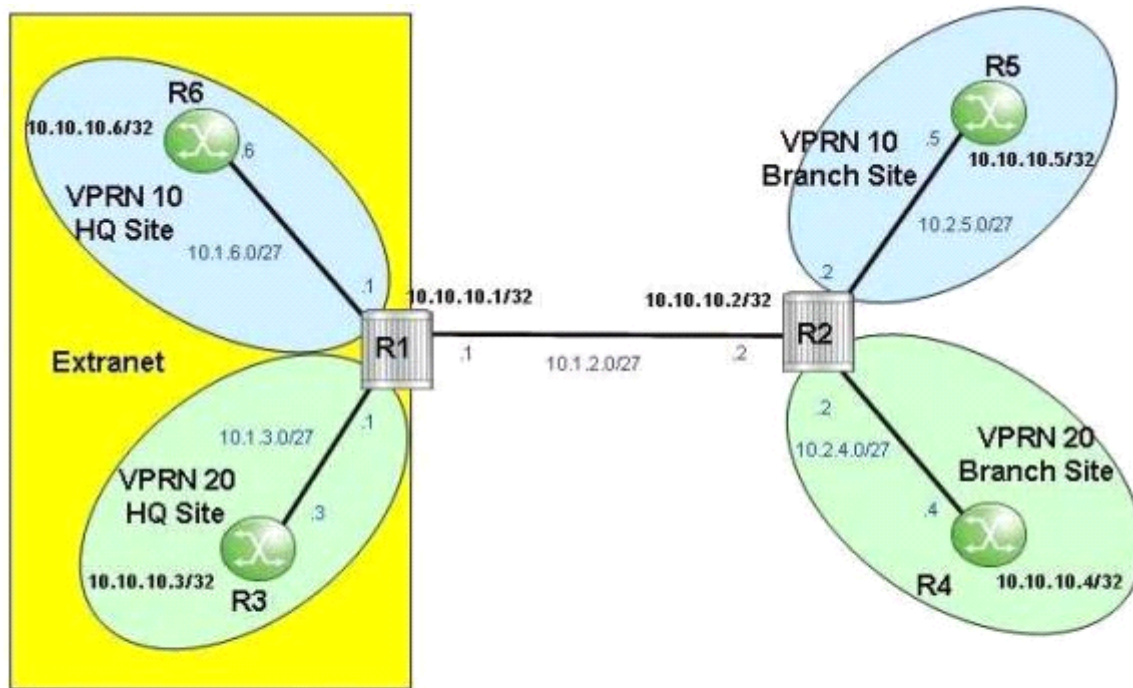
Answer:

B

Question 8

Question Type: MultipleChoice

Click the exhibit.



```
community "Blue-Only" members "target:65100:1"
community "Green-Only" members "target:65100:2"
community "Blue-Green" members "target:65100:3"
community "Extranet-VPN-Blue" members "target:65100:1" "target:65100:3"
community "Extranet-VPN-Green" members "target:65100:2" "target:65100:3"
```

The headquarter sites of VPRN 10 and VPRN 20 are part of an extranet VPRN. Which of the following communities are included in the export policy applied to VPRN 10 on router R1?

Options:

A- 'Extranet-VPN-Blue' and 'Extranet-VPN-Green'

B- 'Blue-Only'

C- 'Extranet-VPN-Blue'

D- 'Blue-Green'

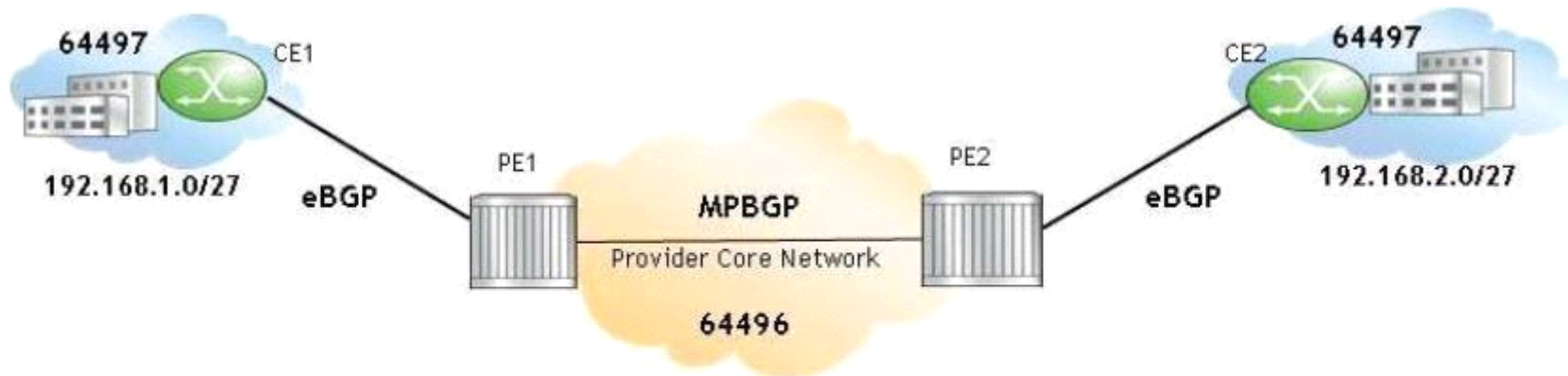
Answer:

C

Question 9

Question Type: MultipleChoice

Click the exhibit.



```

PE1# configure service vpn 10
PE1>config>service>vpn# bgp
PE1>config>service>vpn>bgp# group "toCE1"
PE1>config>service>vpn>bgp>group# neighbor 10.1.3.3
PE1>config>service>vpn>bgp>group# as-override

```

AS-override is configured on PE1 to eliminate the BGP loops. What is the expected AS-Path in the VPN-IPv4 route 64496:10:192.168.2.0/27 received by PE1?

Options:

- A- 64496 64497
- B- 64496
- C- 64497
- D- 64497 64497

Answer:

C

Question 10

Question Type: MultipleChoice

Which of the following about BGP loops in a VPRN environment is TRUE?

Options:

- A-** Traditional BGP loop detection mechanisms are unable to detect a loop in a VPRN scenario.
- B-** BGP loops are detected in a VPRN when the customer has separate sites using the same BGP autonomous system number.
- C-** The Nokia 7750 SR rejects routes containing AS_PATH loops by default.
- D-** When 'remove-private' is configured at a PE, all routes received from the associated CE will have private AS numbers removed.

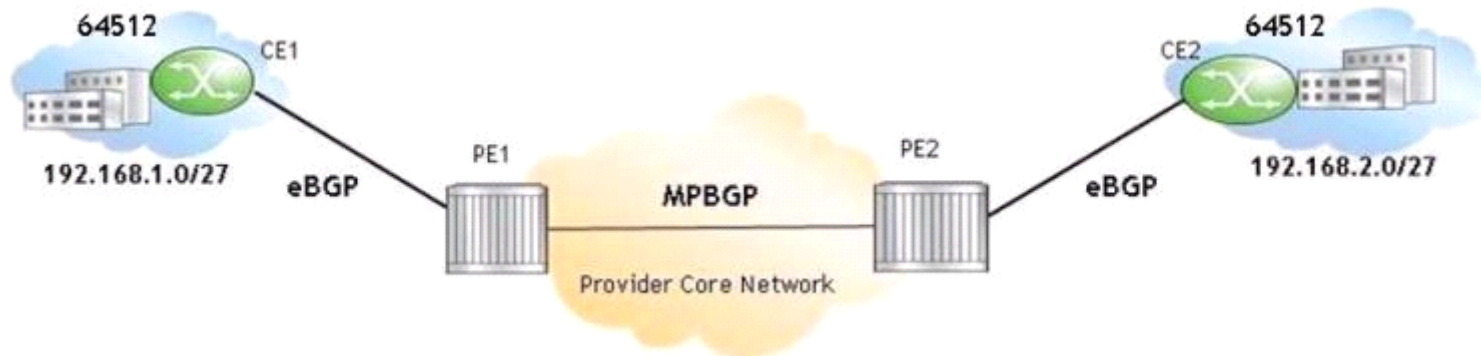
Answer:

B

Question 11

Question Type: MultipleChoice

Click the exhibit.



The AS-path nullification method is used to prevent CE2 from discarding routes received from CE1. On which router should the AS-path nullification policy be configured?

Options:

A- CE1

B- PE2

C- PE1

D- CE2

Answer:

C

Question 12

Question Type: MultipleChoice

When VPRN Outbound Route Filtering (ORF) is enabled, each PE sends its ORF list to its peer using which of the following BGP message types?

Options:

A- Open

B- Update

C- Route Refresh

D- Notification

Answer:

C

To Get Premium Files for 4A0-106 Visit

<https://www.p2pexams.com/products/4a0-106>

For More Free Questions Visit

<https://www.p2pexams.com/nokia/pdf/4a0-106>

