



Free Questions for 4A0-108 by certsdeals

Shared by Melendez on 09-08-2024

For More Free Questions and Preparation Resources

Check the Links on Last Page

Question 1

Question Type: MultipleChoice

Which of the following pairs correctly completes the sentence below?

When Draft Rosen is deployed, PEs exchange CEs' unicast routing information via_____and exchange CEs'multicast group information via_____.

Options:

A- MP-BGP, PIM

B- MP-BGP, MP-BGP

C- mLDP, PIM

D- MP-BGP, mLDP

Answer:

A

Question 2

Question Type: MultipleChoice

Click the exhibit.

```
A:PE1>config>service>vprn# info
...
  mvpn
    provider-tunnel
      inclusive
        pim asm 239.1.1.1
      exit
    exit
    selective
      data-threshold 224.0.0.0/4 1
      pim-ssm 239.1.2.0/24
    exit
  exit
```

The configuration is applied to the ingress PE, but receivers at the remote PE site do not receive multicast traffic. Which of the following is a possible cause?

Options:

- A-** The selective tunnel signaling must be pim-asm.
- B-** The data-threshold group range must match the s-pmsi group range.

C- The selective tunnel configuration must be applied to the egress PEs as well.

D- The MVPN configuration is correct, so there may be a problem with PIM in the core.

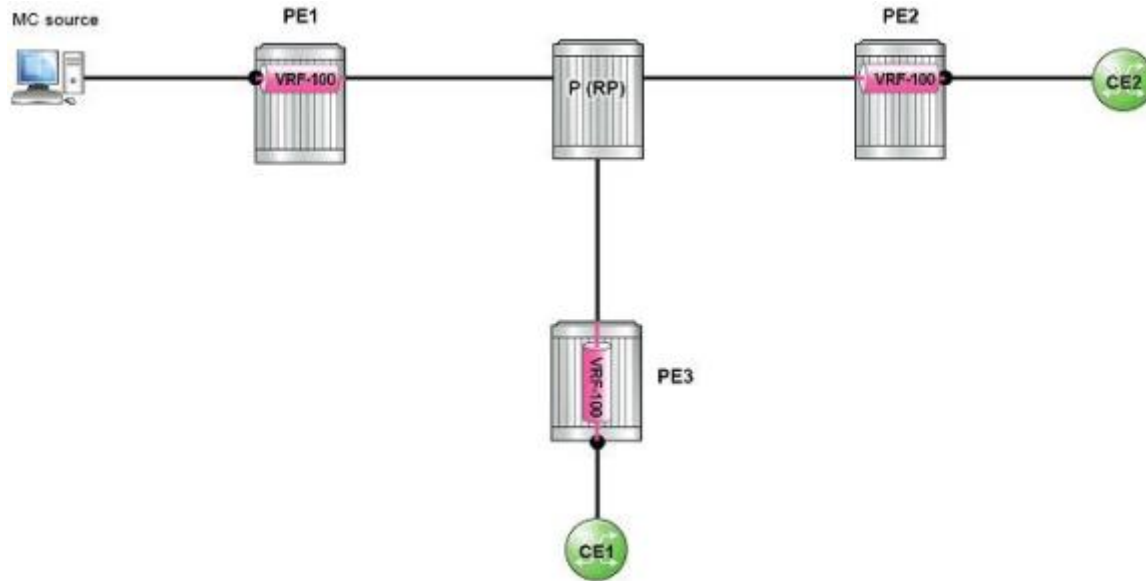
Answer:

D

Question 3

Question Type: MultipleChoice

Click the exhibit.



Assume the I-PMSI group address is G. How many PIM (S,G) entries are on the P (RP) router?

Options:

- A- Only one, and S is PE1.
- B- Only one, and S is the MC source server's IP address.
- C- None, as ROnly maintains (*,G) state.
- D- Three, and S is PE1, PE2 and PE3 respectively.

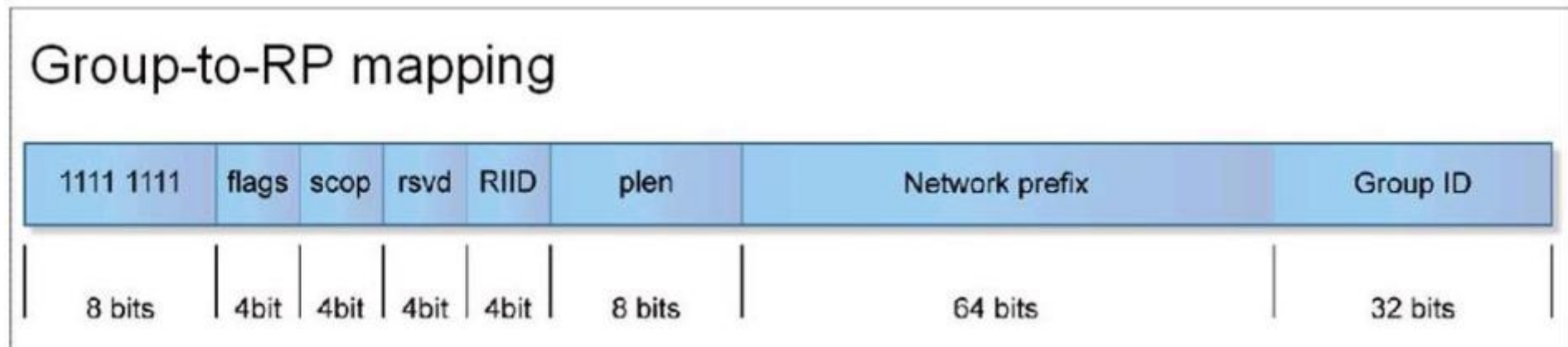
Answer:

D

Question 4

Question Type: MultipleChoice

Click the exhibit.



What is the embedded RP for group FF7E:130:2000:2001:2002:2003::1000? (Please note: the exhibit shows the group-to-RP mapping for your reference only.)

Options:

A- 2000:2001:2002:2003: :1

B- 2000:2001:2002:2003::3

C- 2000:2001:2002: :1

D- 2000:2001:2002::3

Answer:

C

Question 5

Question Type: MultipleChoice

Which of the following ranges is reserved for IPv6 SSM multicast addresses?

Options:

A- FF1X::/16

B- FF3X::/16

C- FF3X::/96

D- FF7X::/16

Answer:

C

Question 6

Question Type: MultipleChoice

Which of the following about PIM messages for IPv6 multicast routing is FALSE?

Options:

- A- Hello and Join/Prune messages use All-PIM-Routers multicast address (FF02::D) as destination.
- B- Register messages use the RP's global unicast IPv6 address as destination.
- C- Hello and Join/prune messages use the outgoing interface's global unicast IPv6 address as source address.
- D- Register messages use the outgoing interface's global unicast IPv6 address as source address.

Answer:

C

Question 7

Question Type: MultipleChoice

Click the exhibit.

```
configure router mcac
  policy "mCac_1"
    bundle "bundle_1" create
      bandwidth 6000
      channel 239.1.1.1 239.1.1.2 bw 2000 type mandatory
      channel 239.1.1.3 239.1.1.4 bw 2000
      no shutdown
    exit
  bundle "bundle_2" create
    bandwidth 6000
    channel 239.1.1.5 239.1.1.6 bw 2000 class high type mandatory
    channel 239.1.1.7 239.1.1.8 bw 2000
    no shutdown
  exit
  default-action discard
exit
```

```
configure router igmp
  interface toReceiver
    mcac
      policy "mCac_1"
      unconstrained-bw 10000 mandatory-bw 6000
    exit
  exit
exit
```

Based on the configuration, channels 239.1.1.1, 239.1.1.2, 239.1.1.3 and 239.1.1.5 have already been established. What happens when this router receives an IGMP report to join group 239.1.1.6?

Options:

- A-** The router tears down channel 239.1.1.3 first, and then establishes a new channel for 239.1.1.6.
- B-** The router tears down either channel 239.1.1.1 or 239.1.1.2 first, and then establishes a new channel for 239.1.1.6.
- C-** No existing channel is torn down, and the new channel for 239.1.1.6 is established as there are enough resources.
- D-** The new channel 239.1.1.6 cannot be established, and a log is generated.

Answer:

D

To Get Premium Files for 4A0-108 Visit

<https://www.p2pexams.com/products/4a0-108>

For More Free Questions Visit

<https://www.p2pexams.com/nokia/pdf/4a0-108>

