



Free Questions for 4A0-114 by [certsinside](#)

Shared by [Knapp](#) on [22-07-2024](#)

For More Free Questions and Preparation Resources

[Check the Links on Last Page](#)

Question 1

Question Type: MultipleChoice

In the diagram, the BGP import policy "north-and-south" is applied to router R5. Router R1 advertises the prefix 140.100.1.0/24 with a community set to "65200:1". Which of the following statements about how router R5 processes the received route update for prefix 140.100.1.0/24 is TRUE?

```

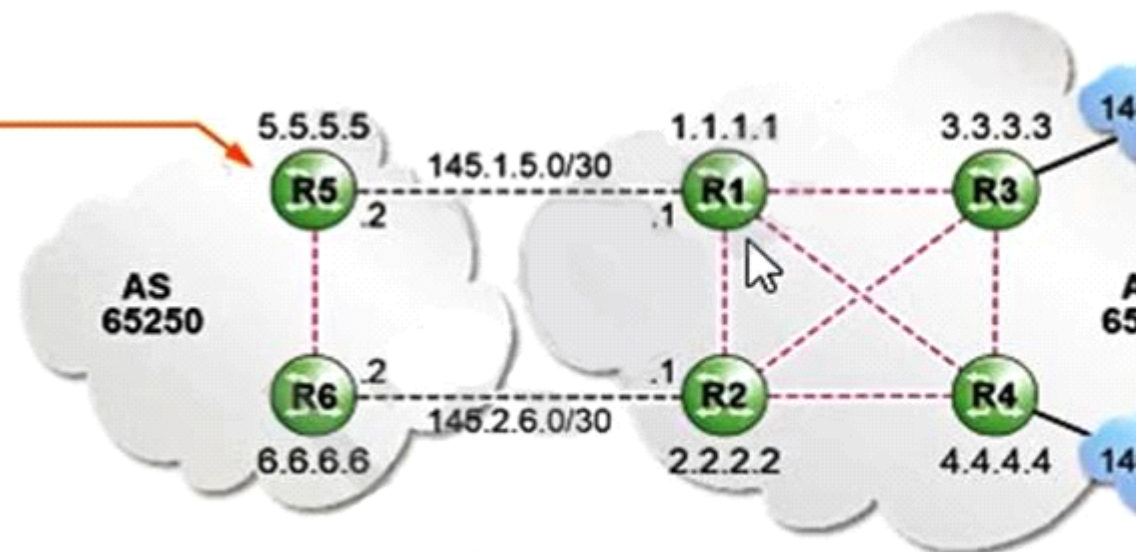
(ex)[configure policy-options]
A:admin@R5# info
  community "north" {
    member "65200:1" ( )
  }
  community "south" {
    member "65200:2" ( )
  }
  policy-statement "north-and-south" {
    entry 10 {
      from {
        community {
          name "north"
        }
      }
      action {
        action-type accept
        local-preference 20
      }
    }
    entry 20 {
      from {
        community {
          name "south"
        }
      }
      action {
        action-type accept
        local-preference 10
      }
    }
  }
}

```

```

(ex)[configure router "Base"]
A:admin@R5# info
  autonomous-system 65250
  ...
  bgp {
    group "eBGP" {
      peer-as 65200
      family {
        ipv4 true
      }
      import {
        policy ["north-and-south"]
      }
    }
    neighbor "145.1.5.1" {
      group "eBGP"
    }
  }
}

```



Legend:

- - - - - iBGP session
- - - - - eBGP session

Options:

- A- The prefix is rejected.
- B- The prefix's local preference is set to 20.
- C- The prefix's community value is removed.
- D- The prefix's community value is modified to 65200:2.

Answer:

D

Question 2

Question Type: MultipleChoice

An export policy is applied on a router to advertise a prefix to its eBGP peers. By default, which of the following updates are made to the route attributes?

Options:

- A- LOCAL_PREFERENCE is set to 100.
- B- NEXT_HOP is set to the neighbor router's interface IP address.
- C- The local AS number is added to AS_PATH.
- D- COMMUNITY is set to the local AS number.

Answer:

C

Question 3

Question Type: MultipleChoice

Which of the following statements about the MED BGP path attribute is FALSE?

Options:

- A- The MED BGP path attribute is transitive.
- B- The MED BGP path attribute is optional.
- C- Routes having lower values in their MED BGP path attribute are preferred.

D- The MED BGP path attribute's value is set by a router at the edge of an AS.

Answer:

D

Question 4

Question Type: MultipleChoice

A BGP router receives the following routes. Which route is selected as best route?

1: 192.169.20.0/24 with local preference 100, MED 150, AS Path 65300 65200 from an eBGP neighbor

2: 192.169.20.0/24 with local preference 100, MED 100, AS Path 63200 from an iBGP neighbor

3: 192.169.20.0/24 with local preference 200, MED 150, AS Path 65400 63200 from an iBGP neighbor

4: 192.169.20.0/24 with local preference 200, MED 100, AS Path 63700 from an eBGP neighbor

Options:

A- Route 1

B- Route 2

C- Route 3

D- Route 4

Answer:

B

Question 5

Question Type: MultipleChoice

Which of the following statements about BGP peering sessions is FALSE?

Options:

A- BGP peers need IP reachability between them.

B- iBGP peers can be non-adjacent.

C- eBGP peers have to be adjacent to each other.

D- BGP peers can be configured with different AS numbers.

Answer:

C

Question 6

Question Type: MultipleChoice

What kind of BGP path attribute is AS_PATH?

Options:

- A- Optional transitive
- B- Optional non-transitive
- C- Well-known discretionary
- D- Well-known mandatory

Answer:

D

To Get Premium Files for 4A0-114 Visit

<https://www.p2pexams.com/products/4a0-114>

For More Free Questions Visit

<https://www.p2pexams.com/nokia/pdf/4a0-114>

