



Free Questions for 4A0-C01 by actualtestdumps

Shared by Hart on 22-07-2024

For More Free Questions and Preparation Resources

Check the Links on Last Page

Question 1

Question Type: MultipleChoice

Which of the following is TRUE when a service uses a GRE transport tunnel?

Options:

- A- The service takes a route determined by the IGP.
- B- The tunnel does not use a service label.
- C- The service label is swapped at each hop in the transport network.
- D- The tunnel is bidirectional and only requires configuration at one end of the service.

Answer:

A

Question 2

Question Type: MultipleChoice

Which of the following about SDPs is TRUE?

Options:

- A- SDP IDs must be locally unique.
- B- SDPs are specific to one service type.
- C- SDPs must use MPLS for their encapsulation.
- D- An SDP is required for a local service.

Answer:

A

Question 3

Question Type: MultipleChoice

Which protocol can be used to signal the outer label for a VPN service?

Options:

A- IPCP

B- LDP

C- PPP

D- TLDP

Answer:

B

Question 4

Question Type: MultipleChoice

Which of the following about 6VPE is FALSE?

Options:

A- To advertise VPN-IPv4 and VPN-IPv6 routes, two MP-BGP sessions are required.

- B-** PE routers must support both IPv4 and IPv6 addresses; customer routers can use either one.
- C-** MP-BGP is used to advertise IPv6 prefixes and the associated VPRN labels.
- D-** The provider core routers are IPv6-unaware.

Answer:

A

Question 5

Question Type: MultipleChoice

Which of the following about VPRNs is FALSE?

Options:

- A-** A VPRN is a Layer 3 service.
- B-** A PE maintains a separate forwarding table for each VPRN.
- C-** The service provider manages the customers IP addressing.
- D-** Multiple VPRNs can be deployed over the same IP/MPLS network infrastructure.

Answer:

C

Question 6

Question Type: MultipleChoice

Which of the following about VPRN labels is FALSE?

Options:

- A-** The outer label allows traffic to transit across the MPLS network.
- B-** The inner label identifies the VPRN service.
- C-** MP-BGP is used to signal VPRN labels.
- D-** The VPRN service label contains the customer's IP address.

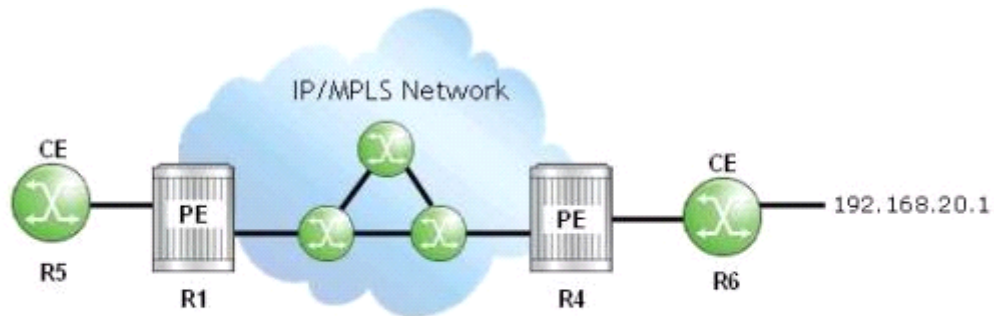
Answer:

D

Question 7

Question Type: MultipleChoice

Click the exhibit.



```
A:R5# traceroute 192.168.20.1
traceroute to 192.168.20.1, 30 hops max, 40 byte packets
<output omitted>
```

R1 and R4 are providing a VPRN for the CEs. Which of the following about the traceroute run on router R5 is TRUE?

Options:

- A- The traceroute will only show one hop: R5-R6.
- B- The traceroute will only show 2 hops; R5-R1 and R4-R6.

- C-** The traceroute will only show 3 hops: R5-R1, R1-R4 and R4-R6.
- D-** The traceroute will show one hop for each router in the provider core and one for each CE-PE hop.

Answer:

C

Question 8

Question Type: MultipleChoice

On the Alcatel-Lucent 7750 SR, which of the following statements about MP-BGP used for a VPRN is TRUE?

Options:

- A-** Routes from different customers with the same IPv4 address prefix are treated as equivalent by MP-BGP.
- B-** MP-BGP will advertise routes to other BGP sessions on the same PE without the need of policies.
- C-** The multi-protocol nature of MP-BGP allows VPRN routes to be converted into IPv4 routes in the provider core network.
- D-** MP-BGP is an enhanced version of BGP that can carry customer route prefixes for multiple VPRNs.

Answer:

D

To Get Premium Files for 4A0-C01 Visit

<https://www.p2pexams.com/products/4a0-c01>

For More Free Questions Visit

<https://www.p2pexams.com/nokia/pdf/4a0-c01>

