



**Free Questions for PEGAPCRSA80V1\_2019 by dumpssheet**

**Shared by Kaufman on 24-05-2024**

**For More Free Questions and Preparation Resources**

**Check the Links on Last Page**

# Question 1

---

## Question Type: MultipleChoice

---

You created an RDA solution for a company that uses an application bar with various buttons that trigger robotic automations. Some of the users complained that the application bar often locks up during automation processing. Others complained that the automations enter the same data two to three times each iteration.

You suspect that the users are triggering the crashes and duplicate automation behavior by double-clicking the buttons on the application bar.

How do you resolve the situation?

### Options:

---

- A-** Hide the application bar as soon as the user clicks one of the buttons, and allow the application bar to reappear once the automation completes.
- B-** After the initial click, disable the application bar buttons, display an automation progress bar, and then re-enable the buttons once the automation completes.
- C-** Talk with the management team about the existing application bar behavior and user error at the company.
- D-** Modify the automations so that they display a full message using the MessageManifest when the automations complete.

**Answer:**

---

C

## Question 2

---

**Question Type:** MultipleChoice

---

There are two basic types of automations: events and procedures.

Which three statements describe a procedure automation? (Choose three.)

**Options:**

---

- A- It performs business logic and may interact with applications.
- B- It is triggered by a user or application action.
- C- It may contain more than one starting block.
- D- It contains an entry point and should contain at least one exit point.
- E- It should return a string value for messaging.

**Answer:**

---

C, D, E

## Question 3

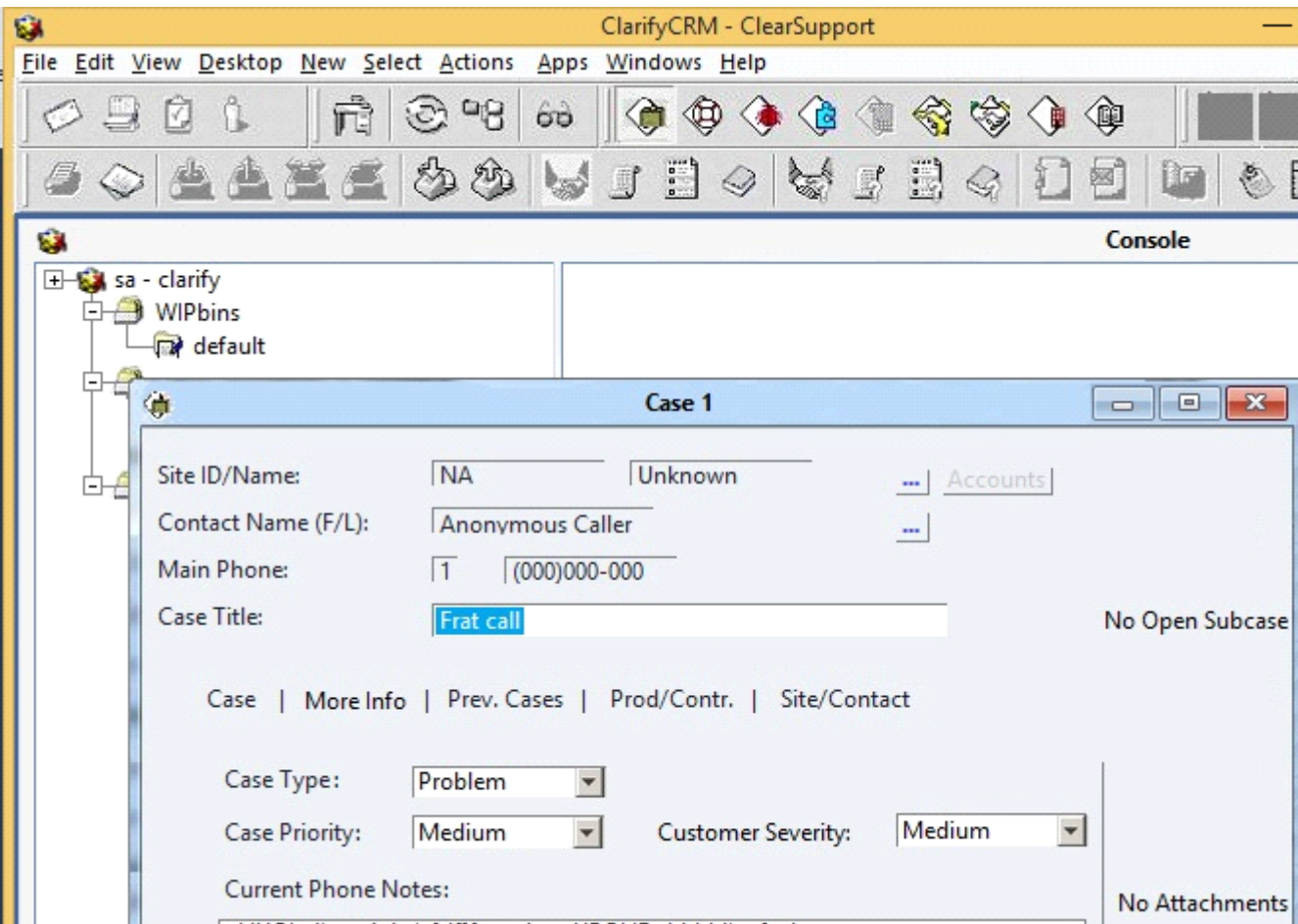
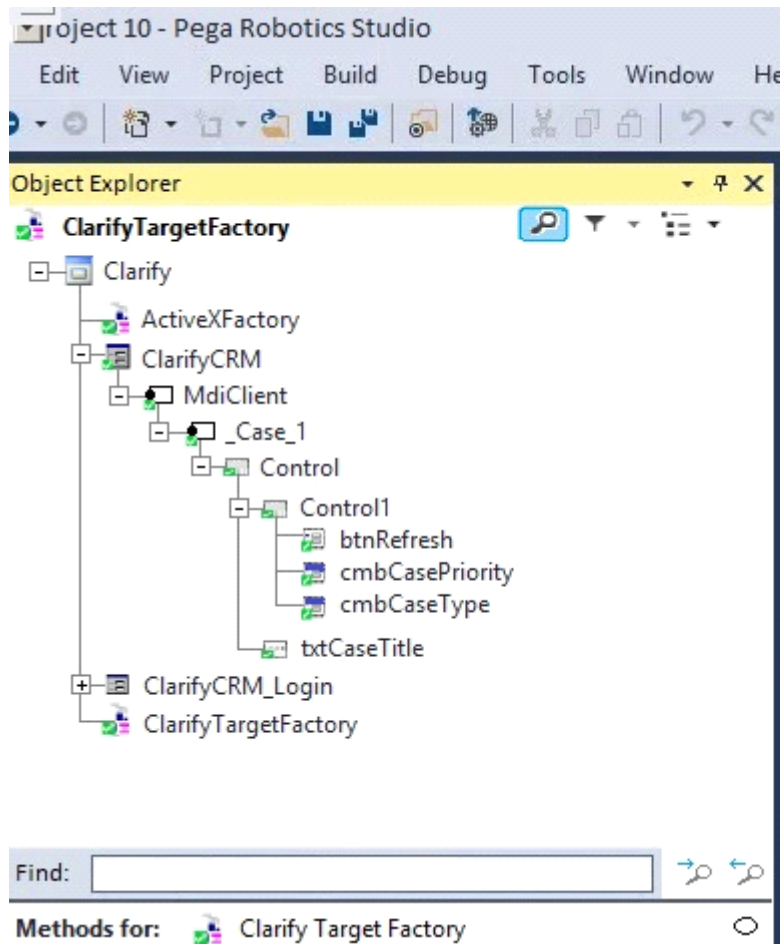
---

**Question Type:** MultipleChoice

---

During application discovery of a Clarify application, you determine that the user accesses more than one customer case concurrently within the application, which creates multiple windows of the same type. This requires you to enable the UseKeys property on an application's object.

Based on the image that shows the application and the matched controls in the Object Explorer, which control's UseKeys property must be set to True?



## Options:

A- ClarifyCRM

**B-** MdiClient

**C-** \_Case\_1

**D-** Control

**Answer:**

---

A

## Question 4

---

**Question Type:** MultipleChoice

---

You are automating the login process for a web application. There are three possible scenarios that may occur: (1) You may successfully login, (2) you may not be successful logging in, or (3) you may log in but go to the change password screen.

Which control from the Toolbox do you use to determine which page you were on after performing the login function?

**Options:**

---

**A-** WaitAll

**B-** Switch

C- WaitAny

D- Signal

**Answer:**

---

C

## Question 5

---

**Question Type: MultipleChoice**

---

You need to configure an application to store encrypted login credentials in the user's local profile. You also need to automate the login using these encrypted credentials.

How do you fulfill this requirement without creating an automation?

**Options:**

---

A- Create a robot activity that performs the application login.

B- Set the necessary adapter credential properties prior to interrogating the target controls.

C- Interrogate the target controls and set the necessary adapter credential properties.

**D-** Interrogate the target controls and create a script to perform the login functionality.

**Answer:**

---

A

## Question 6

---

**Question Type: Hotspot**

---

Pega Robot Studio provides five rules on how to differentiate between cloneable application objects when using key assignments in automations. The first rule states that an event creates the instance to set the context of a cloneable object. The remaining four rules state the requirements for a key assignment.

In the Answer Area, determine if each rule description requires a key assignment.



## Answer Area

### Rule Description

### Key Assignment Required?

Answer: An event from Child Context to Parent Context

Requires a key assignment  
Does not require a key assignment

## Question 7

~~An event from Parent Context to Child Context~~

Question Type: Multiple Choice

~~Requires a key assignment  
Does not require a key assignment~~

Which of the following controls cannot be added to the Windows form?  
Logic within the same context

Requires a key assignment  
Does not require a key assignment

### Options:

- A- ComboBox An event from No Context to a Context
- B- ProgressBar
- C- Pointer
- D- PictureBox

Requires a key assignment  
Does not require a key assignment

### Answer:

C

## Question 8

---

**Question Type:** MultipleChoice

---

Pega Robotic Coding Standards suggest organization of project components. You have added the `_GC_CRM` project item to the `CRMPj`.

Which three components are recommended to be placed in the `_GC_CRM` project item? (Choose three.)

### Options:

---

- A- ForLoop
- B- Switch
- C- stringUtils
- D- messageDialog
- E- dateTimeUtils

### Answer:

---

C, D, E

## Question 9

---

**Question Type:** MultipleChoice

---

You are designing an automation that adds new customers to an online insurance web site. If a customer exists, a pop-up window is displayed with an error message, which closes automatically after 35 seconds.

While debugging the automation, you notice that you are receiving a control not created exception message in the Add Customer procedure after a page navigation occurs.

How do you resolve the exception?

### Options:

---

- A-** Add a missing created event in the Add Customer procedure.
- B-** Ensure the waitForCreate timeout is longer than 35 seconds in the Add Customer procedure.
- C-** Ensure the isCreated timeout is longer than 35 seconds in the Add Customer procedure.
- D-** Add a missing waitForEvent.Exists method in the Add Customer procedure.

### Answer:

---

D

**To Get Premium Files for PEGAPCRSA80V1\_2019 Visit**

**[https://www.p2pexams.com/products/pegapcrsa80v1\\_2019](https://www.p2pexams.com/products/pegapcrsa80v1_2019)**

**For More Free Questions Visit**

**<https://www.p2pexams.com/pegasystems/pdf/pegapcrsa80v1-2019>**

