



Free Questions for 830-01 by certsdeals

Shared by Graham on 24-05-2024

For More Free Questions and Preparation Resources

Check the Links on Last Page

Question 1

Question Type: MultipleChoice

What type of problem does the error message below indicate:

Aug 30 18:19:27 SH pm[18716]: [pm.ERR]: Output from sport:

/opt/rbt/bin/sport (pid 11304) received signal 6 (SIGABRT) dumping core

Options:

- A- It is not a problem, but part of the regular operation
- B- The management process crashed
- C- The optimization process crashed
- D- The management process received permission to connect to a Granite Core device
- E- The sport process received permission to connect to a Granite Core device

Answer:

C

Question 2

Question Type: MultipleChoice

What type of problem does the error message below indicate:

Sep 13 03:50:51 SH alarmd[18371]: [alarmd.NOTICE]: Alarm 'admission_mem'triggering

Sep 13 03:50:51 SH alarmd[18371]: [alarmd.NOTICE]: Alarm 'admission_control' triggering

Sep 13 03:50:51 SH alarmd[18371]: [alarmd.NOTICE]: Alarm 'health'severity changed to 'Admission Control'

Options:

- A- High CPU Utilization
- B- Paging alarm
- C- Admission control on connections
- D- Admission control on memory
- E- Admission control on system

Answer:

D

Question 3

Question Type: MultipleChoice

How can you verify that encrypted Lotus Notes traffic is correctly optimized?

Options:

- A- Looking at the Current Connections report for a successful connection that should appear as NOTES-ENCRYPT.
- B- Double checking that encrypted Lotus Notes is enabled.
- C- Restarting the service.
- D- Looking at the Current Connections report for an unsuccessful connection that should appear as NOTES-ENCRYPT.

Answer:

A

Question 4

Question Type: MultipleChoice

What is required for the Embedded Cascade Shark function to work? (Select 3)

Options:

- A-** TCP port 61898 should be open between the Steelhead and the remote Cascade Pilot.
- B-** You must give the username Shark a password.
- C-** You must enable Cascade Shark on the Management Console TCP Dumps menu.
- D-** The optimization service needs to be restarted.

Answer:

A, B, C

Question 5

Question Type: MultipleChoice

TCP-over-IPv6 traffic is not optimized although you have enabled packet-mode optimization and restarted the optimization service. What could be causing this issue? (Select 2)

Options:

- A- You need to configure in-path rules for the traffic you wish to optimize on the client-side Steelheadappliance.
- B- in-path rules are bidirectional and only need to be configured on the client-side Steelheadappliance.
- C- You need to configure in-path rules for the traffic you wish to optimize on the server-side Steelheadappliance.
- D- You need to configure auto-discovery in-path rules for the traffic you wish to optimized on the server-side Steelheadappliance.
- E- It isnot possible to optimize TCP-over-IPv6 traffic with packet-mode optimization.

Answer:

A, C

Question 6

Question Type: MultipleChoice

Branch office users live streaming video URL fragment requests are not optimized even though Microsoft Silverlight stream splitting is enabled. What could be the causing this? (Select 3)

Options:

- A- The client-side Steelhead appliance optimization service wasn't restarted.
- B- HTTP optimization is disabled on the client-side Steelhead appliance.
- C- The server-side Steelhead appliance optimization service wasn't restarted.
- D- HTTP optimization is disabled on the server-side Steelhead appliance.

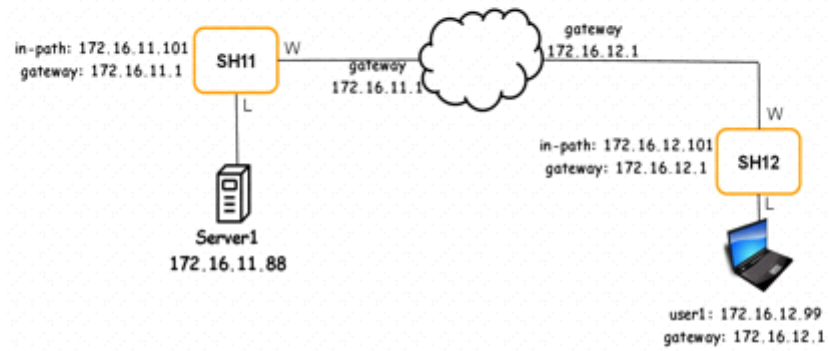
Answer:

A, B, D

Question 7

Question Type: MultipleChoice

-- Exhibit --



-- Exhibit --

Refer to the exhibit. On the Current Connections report, what does the number under "WAN KB" represent?

Options:

A- Segments

B- Datagrams

C- References

D- Packets

Answer:

C

Question 8

Question Type: MultipleChoice

-- Exhibit --

Jul 27 15:29:43	0	Rcvd connection rsp for 172.16.12.99:57907->172.16.19.88:80. Action = Redirect Load balancing to SteelHead 172.16.10.101.Using Enhanced Auto Discovery.SYN PROBE is being GRE'd to SteelHead.
Jul 27 15:29:43	1	Connection is assigned to Steelhead 172.16.10.101

-- Exhibit --

Refer to the exhibit. A Steelhead administrator has decided to implement two Interceptor appliances and one Steelhead appliance on his data center. After configuring the Interceptor appliances, and the Steelhead appliance, he decided to check if the connections are being forwarded appropriately. Which Interceptor diagnostic tool did the administrator use?

Options:

- A- Connection diagnostic.
- B- Connection tracer.
- C- Optimization tracing.
- D- Connection tracing.
- E- Debug validate deployment.

Answer:

D

Question 9

Question Type: MultipleChoice

-- Exhibit --

Manage > Appliances ?

+ New Group		+ New Appliance		- Remove Selected		⇅ Move Selected		Filter		Appliance Operations	
<input type="checkbox"/>	Groups and Managed Appliances	Product / Model	Connection	⋮	+*	≠	Optimization Policy				
<input type="checkbox"/>	▼ Global										
<input type="checkbox"/>	🔍 SH10 / 192.168.99.10 (V70SJ000C84AE)	SH V250H	Connected: Degraded			≠					
<input type="checkbox"/>	🔍 SH11 / 192.168.99.11 (V70HP000C84B0)	SH V250H	Connected: Needs Attention			≠					
<input type="checkbox"/>	🔍 SH12 / 192.168.99.12 (V70MG000C74FE)	SH V250H	Connected: Needs Attention			≠					
<input type="checkbox"/>	🔍 SH13 / 192.168.99.13 (V70JQ000C7488)	SH V250H	Connected: Healthy								

-- Exhibit --

Refer to the exhibit. According to the screenshot, what does the highlighted symbol represent? (Select 2)

Options:

- A-** The configuration of the Steelhead appliances on that cluster are not the same.
- B-** The configuration of each one of those Steelhead appliances are different than the one on the CMC.
- C-** It's missing a Push.
- D-** It's not missing a Push.

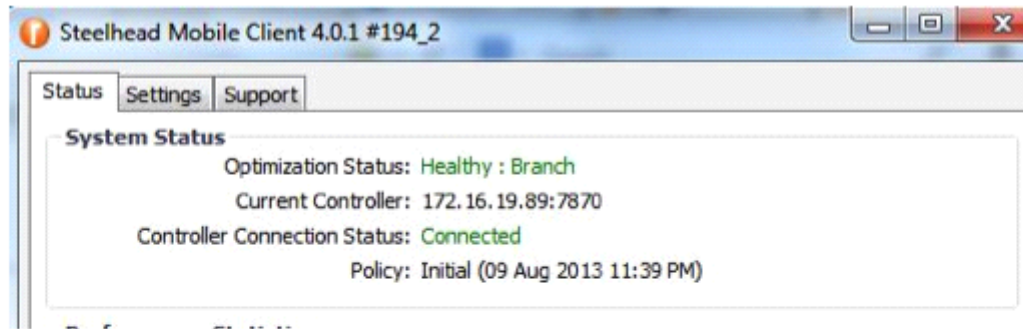
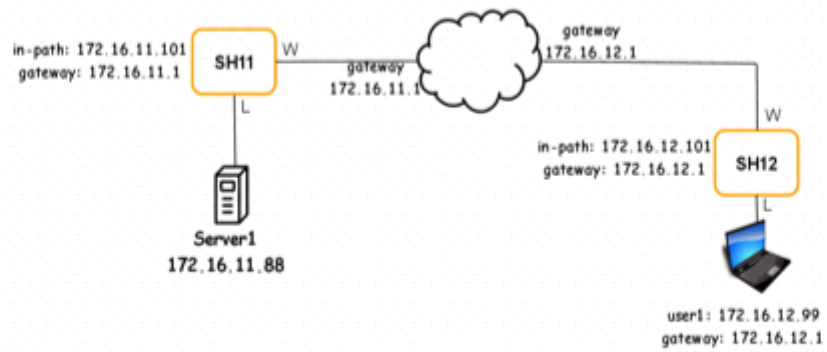
Answer:

B, C

Question 10

Question Type: MultipleChoice

-- Exhibit --



-- Exhibit --

Refer to the exhibit. When USER1 tried to access Server 1, the user sees the shown message on his Steelhead MobileClient. What does this represent?

Options:

- A- The Steelhead Mobileclient does not have enough licenses.
- B- The Steelhead Mobileclient policy is configured with the 'location awareness' feature.
- C- There are pass-through rules not allowing optimization.
- D- The Steelhead Mobile client did not initialize properly and needs to be reset.

Answer:

B

Question 11

Question Type: MultipleChoice

-- Exhibit --

```
SH11 # sh wccp interface inpath0_0 service-group 94 detail
  Protocol:                tcp

  Router IP Address:       172.16.11.3
  Identity:                172.254.1.3
  State:                   Read Error
  Redirect Negotiated:    gre
  Return Negotiated:      gre
  Assignment Negotiated:  hash
  i-see-you Message Count: 454
  Last i-see-you Message: 2013/07/24 21:14:20 (225 second(s) ago)
  Removal Query Message Count: 1
  Last Removal Query Message: 2013/07/24 21:14:45 (200 second(s) ago)
  here-i-am Message Count: 479
  Last here-i-am Message: 2013/07/24 21:18:00 (5 second(s) ago)
  Redirect Assign Message Count: 0
  Last Redirect Assign Message: N/A (0 second(s) ago)

  Web Cache Client Id: 172.16.10.101
  Weight:                25
  Distribution:          51 (19.92%)
  Hash Assignment Map:
  421084210842108421084210842108421084210842108421084210842108421

  Web Cache Client Id: 172.16.11.101
  Weight:                100
  Distribution:          205 (80.08%)
  Hash Assignment Map:
  FBDEF7BDEF7BDEF7BDEF7BDEF7BDEF7BDEF7BDEF7BDEF7BDEF7BDEF7BDEF7BDE
```

-- Exhibit --

In a WCCP environment with R3, SH10 and SH11, it was observed that SH11's WCCP state is "read error". What is the possible cause?

Options:

- A- The Steelhead is not receiving i-see-you messages from the router
- B- The Steelhead is not sending here-i-am messages to the router
- C- The Steelhead is not receiving removal query messages from the router
- D- Everything is in order -- working properly

Answer:

A

Question 12

Question Type: MultipleChoice

A Steelhead administrator has recently decided to implement Steelhead Mobile clients on some of his company employees PCs. Most of the PCs only have 5 GB of disk space available. What would you do in this case? (Select 2)

Options:

- A-** Nothing can be done. The Steelhead Mobile client needs at least 10 GB of hard drive space.
- B-** Change the data store settings on the Steelhead Mobile Controller's policy and choose a smaller size for the data store size.
- C-** Change the data store settings on the data center Steelhead appliance's policy and choose a smaller size for the data store size.
- D-** Create a new endpoint policy with a smaller data store size.

Answer:

B, D

To Get Premium Files for 830-01 Visit

<https://www.p2pexams.com/products/830-01>

For More Free Questions Visit

<https://www.p2pexams.com/riverbed/pdf/830-01>

