



**Free Questions for [Salesforce-MuleSoft-Developer-I](#) by  
[ebraindumps](#)**

**Shared by [Osborn](#) on [20-05-2024](#)**

**For More Free Questions and Preparation Resources**

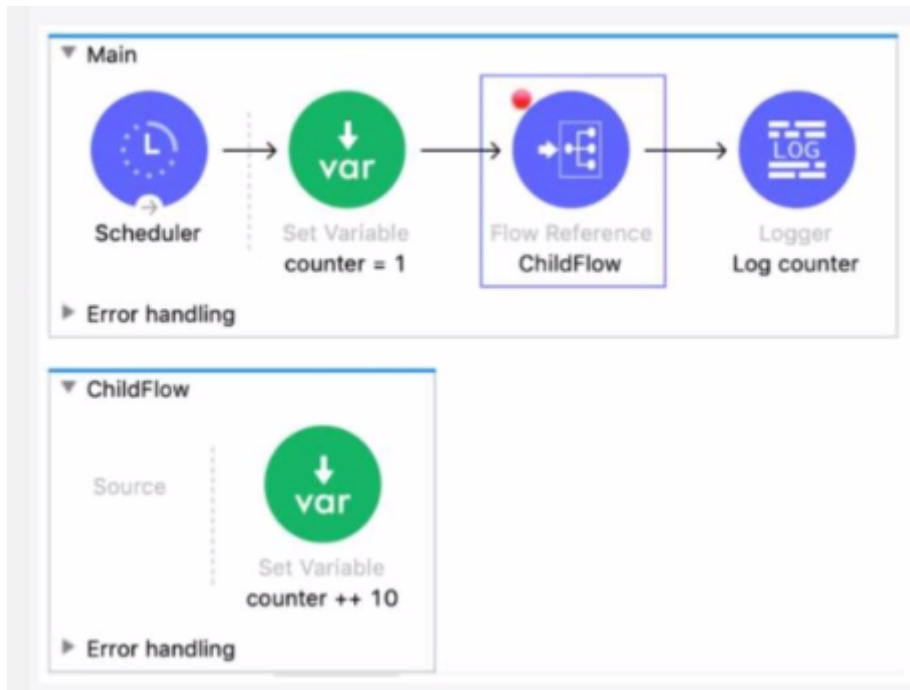
**[Check the Links on Last Page](#)**

# Question 1

Question Type: MultipleChoice

Refer to the exhibits. The Mule application is stopped at the breakpoint in Anypoint Studio. A watch expression is set to the counter variable.

What value is displayed for this watch expression?



### Options:

---

A- 1

B- 11

C- 110

D- null

### Answer:

---

A

## Question 2

---

### Question Type: MultipleChoice

---

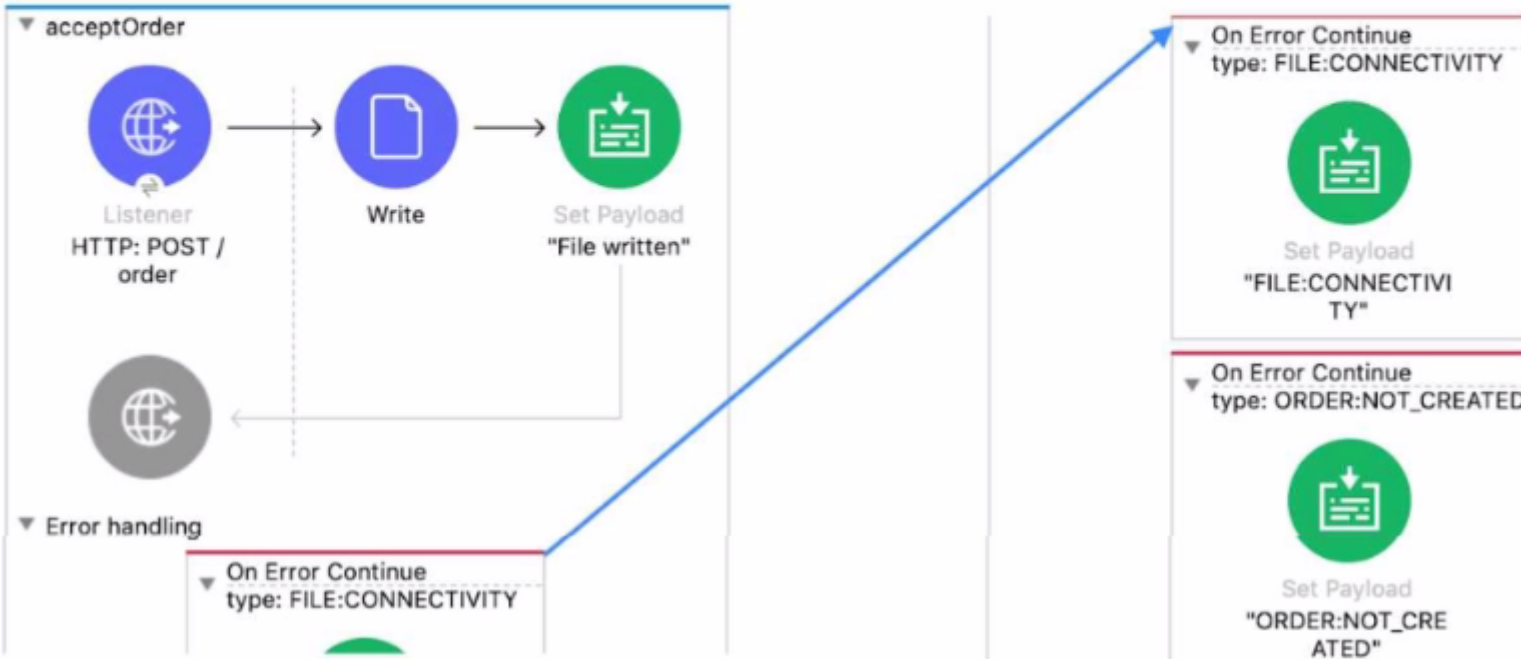
Refer to the exhibits. The Mule application does NOT define any global error handlers.

A web client sends a POST request to the Mule application with this input payload. The File Write operation throws a FILE: CONNECTIVITY error.

What response message is returned to the web client?

Input payload:

```
{ "oid": "1000", "itemid": "AC200", "qty": "4" }
```



**Write** X

There are no errors.

General

Advanced

**Error Mapping**

Metadata

Notes

Error types to be mapped:  Map to:

```
<flow name="acceptOrder">  
  <http:listener doc:name="HTTP: POST /order" config-ref="HTTP_Listener_config"  
    path="/order" allowedMethods="POST">  
    <http:error-response >
```

**Options:**

---

- A- 'FILE: CONNECTMTV'
- B- 'OTHER ERROR'
- C- 'File written'
- D- 'ORDER: NOT CREATED'

**Answer:**

---

D

## Question 3

---

**Question Type: MultipleChoice**

---

Refer to the exhibits. A database Address table contains a ZIPCODE column and an increasing ID column. The Address table currently contains four (4) records. The On Table Row Database listener is configured with its watermark set to the Address table's ZIPCODE column and then the Mule application is run in Anypoint Studio for the first time, and the On Table Row Database listener polls the Address table.

A new row is added to the database with ID=5 and ZIPCODE-90006, and then the On Table Row Database listener polls the database again.

Alter the next execution of the On Table Row Database listener polling, what database rows have been processed by the Mule flow since the Mule application was started?



### Options:

A- ID ZIPCODE

1 90001

2 90005

3 90009

4 90001

**B-** ID ZIPCODE

1 90001

2 90005

3 90009

5 90006

**C-** ID ZIPCODE

1 90001

2 90005

3 90009

**D-** ID ZIPCODE

1 90001

2 90005

3 90009

4 90001

5 90006

**Answer:**

---

A

## Question 4

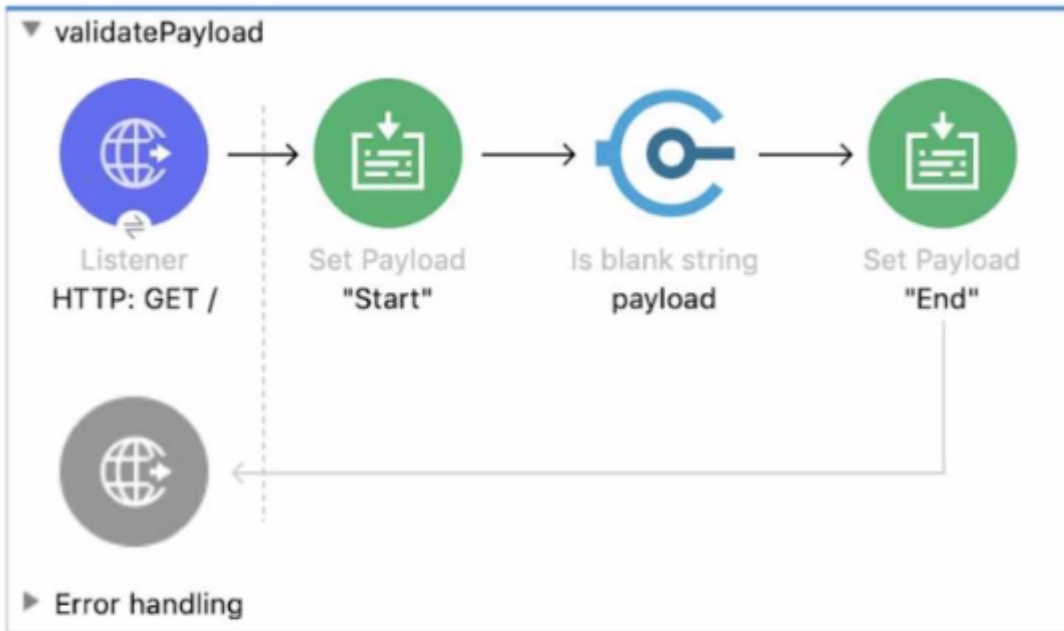
---

**Question Type:** MultipleChoice

---

Refer to the exhibits. The Mule application does NOT define any global error handler elements. A web client sends a GET request to the HTTP Listener. What response message is returned to the web client?





```

<flow name="validatePayload" >
  <http:listener doc:name="HTTP: GET /" config-ref="HTTP_Listener_config" path="/" />
  <set-payload value="Start" doc:name="'Start'" />
  <validation:is-blank-string doc:name="payload" value="#[payload]" />
  <set-payload value="End" doc:name="'End'" />
</flow>

```

Options:

---

- A- 'End'
- B- 'Start'
- C- -...
- D- 'Siring is not blank'

**Answer:**

---

D

## Question 5

---

**Question Type:** MultipleChoice

---

Refer to the exhibit. This RAML fragment defines a Book data type that is used in a RAML API specification.

An API implementation is created for this RAML API specification.

What is valid JSON input for a request from a web client to an implementation of this RAML API specification?

```
##RAML 1.0 DataType
```

```
type: object  
properties:  
  ID?: integer  
  title: string  
  author: string  
  publisher?: string  
  year: integer  
  ISBN:  
    type: string  
    required: true
```

A.

```
{  
  "ISBN": "0471767840",  
  "year": 2007,  
  "title": "Shakespeare",  
  "author": "Encyclopedia Britannica"  
}
```

B.

```
{
  "ID?": 101,
  "title": "Shakespeare",
  "author": "Encyclopedia Britannica",
  "publisher?": "Dunwich House Publishing",
  "year": 2007,
  "ISBN": "0471767840"
}
```

C.

```
{
  "ISBN": "0471767840"
}
```

D.

```
{
  "ID": 101
  "publisher": "Dunwich House Publishing",
  "ISBN": "0471767840"
}
```

## Options:

---

A- Option A

**B-** Option B

**C-** Option C

**D-** Option D

**Answer:**

---

B

## Question 6

---

**Question Type:** MultipleChoice

---

An API was designed in API Designer, published to Anypoint Exchange, then imported into API Manager.

A Mule application implements this API and is deployed to CloudHub. API Manager manages this deployed API implementation.

What is the easiest and most idiomatic (used for its intended purpose) way to enforce a Client ID Enforcement policy on this Mule application?

**Options:**

---

- A-** In API Manager, apply a Client ID Enforcement policy for the API instance
- B-** In Anypoint Studio, code a custom policy for Client ID Enforcement and then add the custom policy to Runtime Manager for the Mule application deployment
- C-** In Anypoint Design Center, code a custom policy for Client ID Enforcement and then publish the custom policy to the API portal in Anypoint Exchange
- D-** In API Designer, add Client ID Enforcement policy requirements to the API specification

**Answer:**

---

A

## Question 7

---

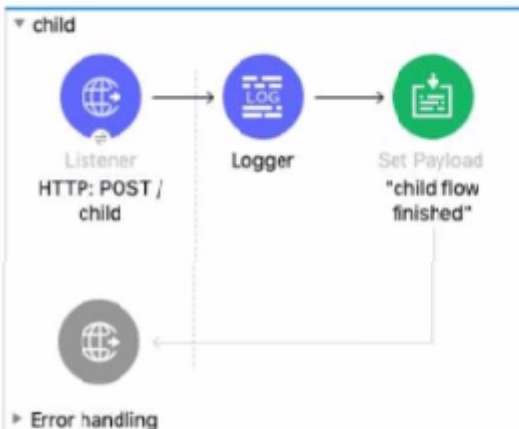
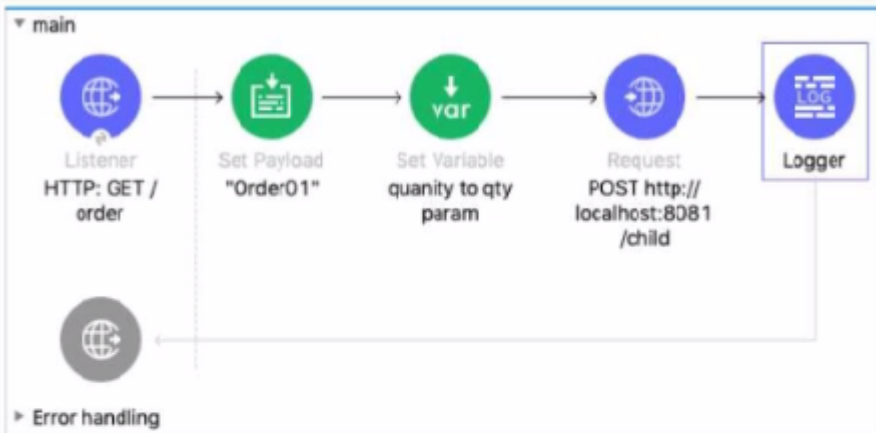
**Question Type:** MultipleChoice

---

Refer to the exhibits. The main flow contains an HTTP Request operation configured to call the child flow's HTTP Listener.

A web client sends a GET request to the HTTP Listener with the sty query parameter set to 30.

After the HTTP Request operation completes, what parts of the Mule event at the main flow's Logger component are the same as the Mule event that was input to the HTTP Request operation?



```

<http:listener-config name="HTTP_Listener_config" doc:name="HTTP Listener config" >
  <http:listener-connection host="0.0.0.0" port="8081" />
</http:listener-config>

<flow name="main" >
  <http:listener doc:name="HTTP: GET /order" config-ref="HTTP_Listener_config" path="order"/>
  <set-payload value='Order01' doc:name='Order01' />
  <set-variable value="#[attributes.queryParams.qty]" doc:name="quantity to qty param"
  variableName="quantity"/>
  <http:request method="POST" doc:name="POST http://localhost:8081/child"
  url="http://localhost:8081/child"></http:request>
  <logger level="INFO" doc:name="Logger" message='#[output application/json ---
  { flow: "parent", qtyAttribute: attributes.queryParams.qty, quantityVar: vars.quantity, payload: payload }]' />
</flow>

<flow name="child" >
  <http:listener doc:name="HTTP: POST /child" config-ref="HTTP_Listener_config" path="/child"/>
  <logger level="INFO" doc:name="Logger"
  message='#[output application/json ---
  { flow: "child", qtyAttribute: attributes.queryParams.qty, quantityVar: vars.quantity, payload: payload }]' />
  </flow>
  
```

**Options:**

---

- A- The payload and all variables
- B- All variables
- C- The entire Mule event
- D- The payload and all attributes

**Answer:**

---

A

## Question 8

---

**Question Type:** MultipleChoice

---

Refer to the exhibit. APIkit is used to generate flow components for the RAML specification.

How many apikit:router XML elements are generated to handle requests to every endpoint defined in the RAML specification?



```
orders.raml

/orders:
  get:
  post:
  /order:
    get:
    patch:
/reports:
  get:
```

**Options:**

---

A- 3

B- 5

C- 2

D- 1

**Answer:**

---

D

**Question 9**

---

**Question Type: MultipleChoice**

---

Refer to the exhibits. The webClient flow sends requests to the mockServer Row's HTTP Listener.

An HTTP: METHOD\_NOT\_ALLOWED error is thrown each time the webClient flow executes.

What attribute value must be changed in the webClient flow's HTTP Request operation to prevent this error from being thrown?

**Options:**

---

- A-** Change the method attribute's value to 'POST'
- B-** Change the path attribute's value to '/api/partners/fastShopping'
- C-** Change the protocol attribute's value to 'HTTPS'
- D-** Change the method attribute's value to '\*'

**Answer:**

---

A

## Question 10

---

**Question Type: MultipleChoice**

---

Refer to the exhibits.

The screenshot displays the MuleSoft Studio interface. On the left, a flow diagram shows a 'Listener HTTP: GET' component connected to a 'Set Payload' component, with an 'Error handling' section below. The main workspace is divided into three panels:

- Global Element Properties:** Shows the configuration for the 'HTTP Listener config'. The 'Name' is 'HTTP\_Listener\_global\_config'. The 'Connection' section is expanded to show 'Protocol: HTTP (Default)', 'Host: acme.com', and 'Port: 8081'. The 'General' section shows 'Base path: /' and 'Listener interceptors: None'.
- HTTP: GET:** Shows the configuration for the event source. A red error message states 'Attribute 'path' is required'. The 'Display Name' is 'HTTP: GET'. The 'Basic Settings' section shows 'Connector configuration: HTTP\_Listener\_config'. The 'General' section has an empty 'Path' field.

The Mule application implements a REST API that accepts GET requests from web clients on the URLs: <http://acme.com/order/status> and <http://vacme.com/customer/status>.

What path value can be set in the HTTP GET event source to accept web client requests from both of these URLs?

**Options:**

---

A- \*[order,customer]/status

B- \*/status

C- ?[order,customer]/status

D- \*status

**Answer:**

---

B

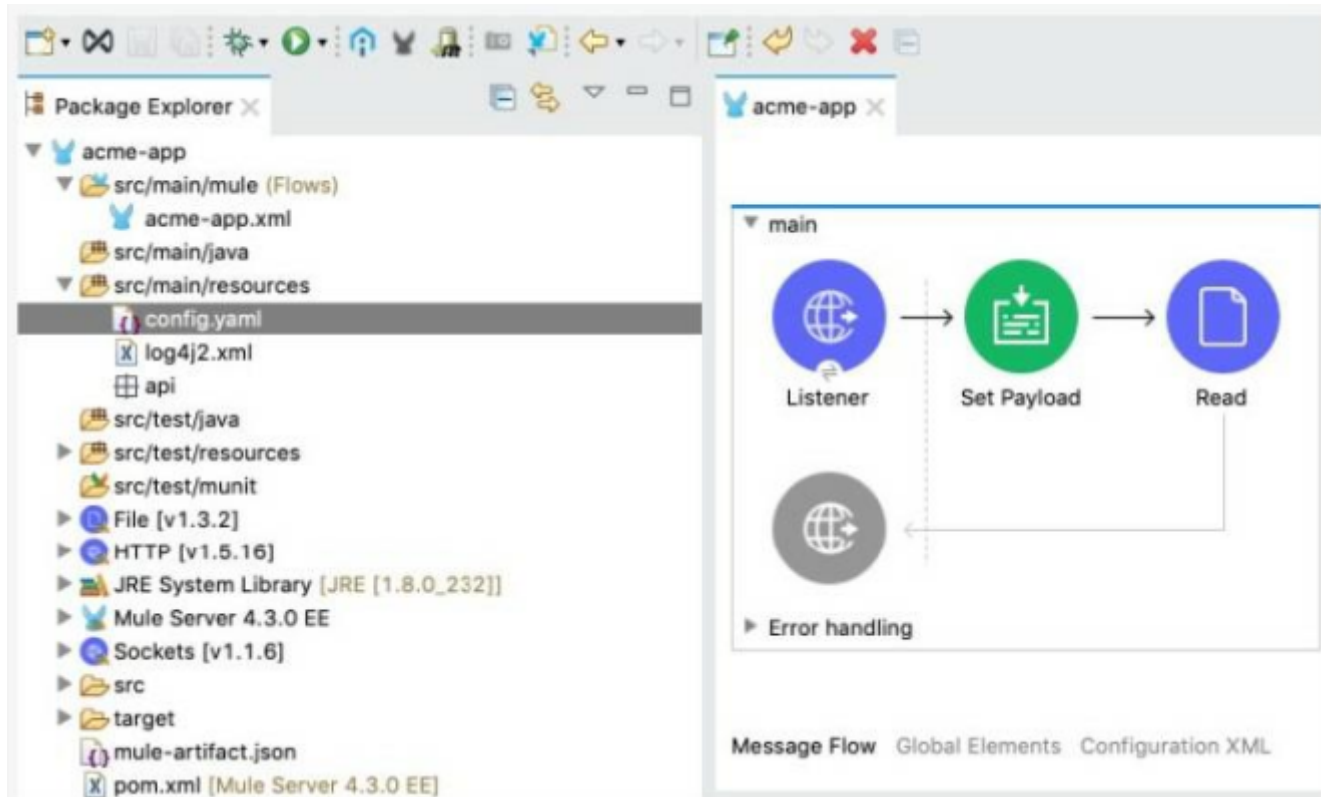
## Question 11

---

**Question Type:** MultipleChoice

---

Refer to the exhibit.



The Mule application's connectors are configured with property placeholders whose values are set in the config.yaml file

What must be added to the Mule application to link the config.yaml file's values with the property placeholders?

### Options:

**A-** A configuration-properties element in the acme-app xml file

- B-** A dependency element in the pom xml file
- C-** A file-config element in the acrne-app xml file
- D-** A propertiesFile key/value pair in the mule-artifact json file

**Answer:**

---

A

**To Get Premium Files for Salesforce-MuleSoft-Developer-I Visit**

**<https://www.p2pexams.com/products/salesforce-mulesoft-developer-i>**

**For More Free Questions Visit**

**<https://www.p2pexams.com/salesforce/pdf/salesforce-mulesoft-developer-i>**

