

# **Free Questions for 4A0-104**

**Shared by Rivas on 04-10-2024**

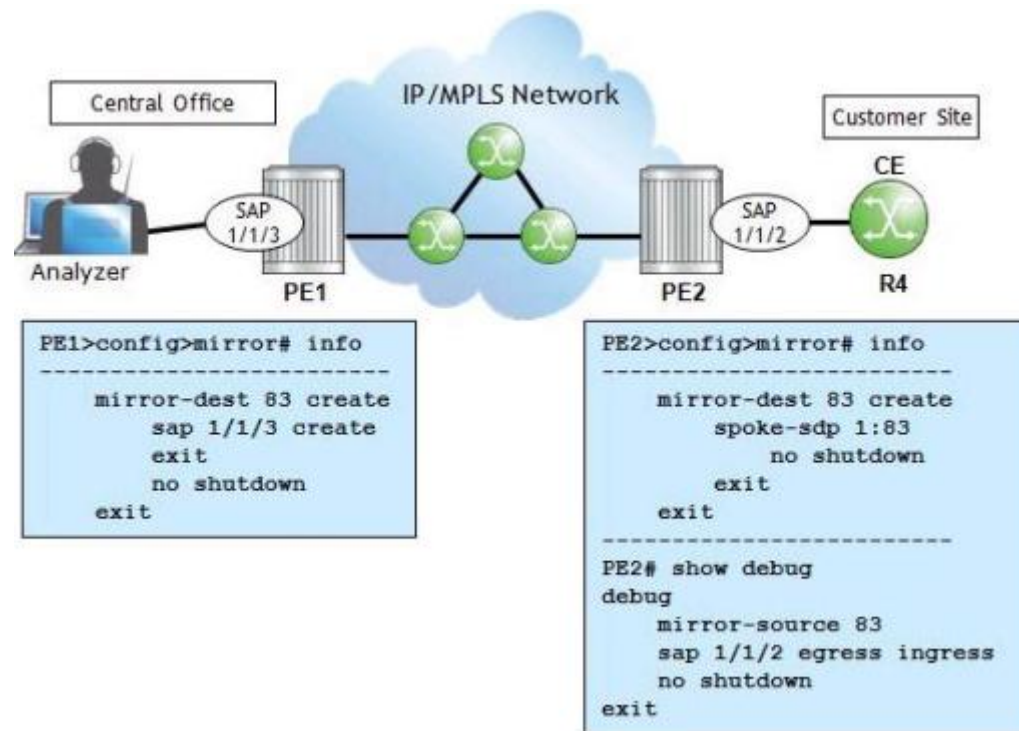
**For More Free Questions and Preparation Resources**

**Check the Links on Last Page**

# Question 1

Question Type: MultipleChoice

Click the exhibit.



PE1 and PE2 are Nokia 7750 SRs. What needs to be added to PE1's configuration to mirror traffic between PE2 and the customer site?

## Options:

---

- A- A 'remote-source' needs to be added to the mirror destination on PEL
- B- A mirror source needs to be added to PE1 with a 'remote-source'.
- C- This is not possible since the protocol analyzer is located at the Central Office. It needs to be at the customer site.
- D- A mirror source with SAP 1/1/2 needs to be added on PEL

## Answer:

---

A

## Question 2

---

### Question Type: MultipleChoice

---

Click the exhibit.

```
A:R1# oam  "clockwise"  
0 hops min, 0 hops max, 116 byte packets  
1 10.10.10.2 rtt=0.470ms rc=8(DSRtrMatchLabel)  
2 10.10.10.4 rtt=0.784ms rc=8(DSRtrMatchLabel)  
3 10.10.10.3 rtt=0.887ms rc=3(EgressRtr)  
A:R1#
```

Which OAM tool produced this output?

**Options:**

---

- A- vprn-ping
- B- sdp-ping
- C- traceroute
- D- lsp-trace

**Answer:**

---

D

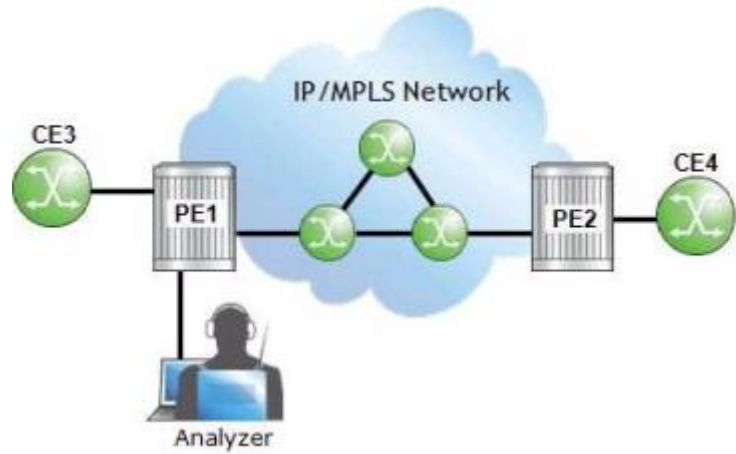
## Question 3

---

**Question Type:** MultipleChoice

---

Click the exhibit.



The operator at PE1 wants to analyze the traffic between PE2 and CE4. On an Nokia 7750 SR, which of the following is required as part of the configuration?

**Options:**

---

- A- PE2 needs a mirror source with the remote source specified.
- B- PE1 needs a mirror destination with the remote source specified.
- C- PE1 needs a mirror source with the remote source specified.
- D- PE1 and PE2 need a mirror source specified.

**Answer:**

---

B

## Question 4

---

Question Type: MultipleChoice

---

How many service labels must be signaled to bring up a fully-meshed VPLS among five PE routers?

Options:

---

A- 1

B- 5

C- 10

D- 20

Answer:

---

D

## Question 5

---

**Question Type: MultipleChoice**

Click the exhibit.

```
R4# show service id 333 base
=====
Service Basic Information
=====
Service Id      : 333          Vpn Id          : 0
Service Type    : VPLS
<..output omitted..>
Admin State     : Up          Oper State       : Up
MTU             : 1514        Def. Mesh VC Id : 333
SAP Count       : 0          SDP Bind Count  : 3
<..output omitted..>
=====
Service Access & Destination Points
=====
Identifier                                     Type           AdmMTU  OprMTU  Adm  Opr
-----
sdp:1:333 M(10.10.10.1)                       Mesh           0       1556   Up   Down
sdp:2:333 M(10.10.10.2)                       Mesh           0       1556   Up   Up
sdp:3:333 M(10.10.10.3)                       Mesh           0       1556   Up   Up
=====

R4# show router ldp bindings service-id 333
LDP Service FEC 128 Bindings
=====
Type  VCId   SvcId  SDPId  Peer           IngLbl  EgrLbl  LMTU  RMTU
-----
V-Eth 333   333    1      10.10.10.1    131061U 131061  1500 1386
V-Eth 333   333    2      10.10.10.2    131064U 131068  1500 1500
V-Eth 333   333    3      10.10.10.3    131063U 131063  1500 1500
=====
```

Both clips of output are from router R4. The show service command indicates that an SDP is down. What might be the cause?

**Options:**

---

- A-** The mesh SDP on router R4 has been shutdown.
- B-** The mesh SDP on 10.10.10.1 has been shutdown.
- C-** The service MTU on 10.10.10.1 has been set to a different value.
- D-** The IngLbl and EgrLbl that router R4 has for 10.10.10.1 are identical.

**Answer:**

---

C

## Question 6

---

**Question Type: MultipleChoice**

---

Which of the following best describes the flooding of traffic on a PE when unknown traffic is received on a SAP of a VPLS?

**Options:**

---

- A-** Traffic is flooded to all SAPs in the service.



- B-** Traffic is flooded to all SAPs and spoke SDPs in the service.
- C-** Traffic is flooded to all SAPs and mesh SDPs in the service.
- D-** Traffic is flooded to all SAPs, spoke SDPs, and mesh SDPs in the service.
- E-** The traffic is not flooded.

**Answer:**

---

D

## Question 7

---

**Question Type:** MultipleChoice

---

Which of the following best describes how a MAC FDB is populated in a VPLS service?

**Options:**

---

- A-** A VPLS service does not use a MAC FDB.
- B-** The router reads the destination MAC address of frames passing through the service.
- C-** The router reads the source MAC address of frames passing through the service.

- D- The router uses reverse ARP (RARP) to resolve the MAC addresses for unknown destinations.
- E- The router is programmed with MAC addresses by the network administrator.

**Answer:**

---

C

## Question 8

---

**Question Type: MultipleChoice**

---

Which of the following about an E-pipe terminating on a VPLS is FALSE?

**Options:**

---

- A- The VC-IDs used between the E-pipe and VPLS must match.
- B- The E-pipe must maintain a MAC FDB in order to connect to the VPLS.
- C- The service ID of the E-pipe can be different from that of the VPLS.
- D- The service MTU of the VPLS and E-pipe must match.

**Answer:**

---

B

## Question 9

---

**Question Type:** MultipleChoice

---

Consider a network that has four PE routers. If a customer wants a VPLS that has sites on only three of the PEs, how many mesh SDPs need to be configured for this service?

**Options:**

---

A- 3

B- 4

C- 6

D- 12

**Answer:**

---

C

## Question 10

---

**Question Type:** MultipleChoice

---

By default, what does an Nokia 7750 SR do to support VPLS services for different customers?

### Options:

---

- A- Dedicates a separate port for each customer.
- B- Performs ARP look-ups for each service.
- C- Maintains a different IP routing table for each service.
- D- Maintains a different MAC Forwarding Database for each service.

### Answer:

---

D

**To Get Premium Files for 4A0-104 Visit**

**<https://www.p2pexams.com/products/4a0-104>**

**For More Free Questions Visit**

**<https://www.p2pexams.com/nokia/pdf/4a0-104>**

