

Free Questions for 1Z0-521

Shared by Hopper on 04-10-2024

For More Free Questions and Preparation Resources

Check the Links on Last Page

Question 1

Question Type: MultipleChoice

Employee information in Oracle E-Business Suite Release 12 is partitioned by _____.

Options:

- A- Legal Entity
- B- Operating Unit
- C- Business Group
- D- HR Organization
- E- Inventory Organization

Answer:

C

Question 2

Question Type: MultipleChoice

Identify two types of regions in daily Business Intelligence. (Choose two)

Options:

A- Menu

B- Table

C- Folder

D- Report

E- Graph

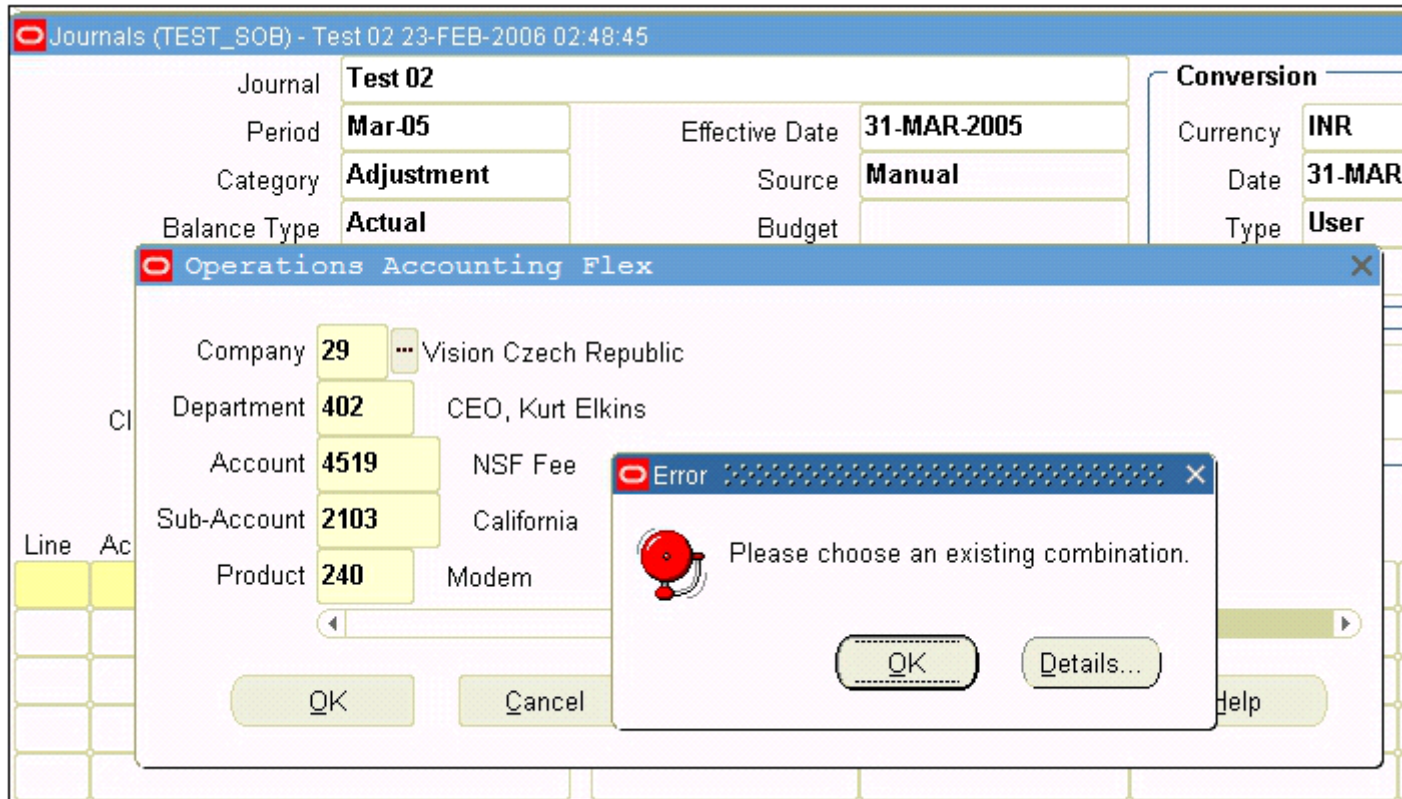
Answer:

B, E

Question 3

Question Type: MultipleChoice

Exhibit



View the exhibit while entering a journal in Journal form, you enter a code combination of 29.402.4519.2103.240 in the five-segment Accounting Flexfield. However you are unable to proceed after entering this account combination.

What could be problem in the structure definition of accounting Flexfield?

Options:

- A- The "Freeze Rollup Groups" check box is selected
- B- The "Allow Dynamic Inserts" check box is deselected
- C- The "Freeze Flexfield definition" check box is selected
- D- The "Cross Validate Segment" check box is selected

Answer:

B

Question 4

Question Type: MultipleChoice

ABC Corp has determined its Accounting Key Flexfield structure for the implementation of Oracle E-Business Suite Release 12. The Accounting Key Flexfield structure contains five Segments: Company, Business Unit, Department, Account, and Product.

They have the following requirements:

- 1) The Department values should be based on the Business Units
- 2) They want to produce a quarterly Balance Sheet for each Company.

Which three statements are true? (Choose three)

Options:

- A- The Product Value Set is dependent on the Accounts
- B- The Business Unit Value Set is defined as Independent
- C- The Account Segment has a Value Set with no Validation
- D- The Company Segment is qualified as the Balancing Segment
- E- The Department Segment is qualified as an Intercompany Segment
- F- Cross-validation rules are required to enforce dependency of departments on the business units.

Answer:

B, D, F

Question 5

Question Type: MultipleChoice

You are the Human Resource Lead for the ERP implementation of ABC Corporation. You have defined the employees in Oracle Human Resources select three activities that utilize the employee record. (Choose three)

Options:

- A- Approvals
- B- Asset assignment
- C- Organization creation
- D- Journal Entry creation
- E- AutoCreate Purchase Order

Answer:

A, B, E

Question 6

Question Type: MultipleChoice

Identify two correct statements related to key performance indicators and KPI region in daily Business intelligence. (Choose two)

Options:

- A- Can be of table format only

- B-** Can be configured for each dashboard
- C-** Organizes data into reporting hierarchies
- D-** Is a strategic business factor that is used for reporting
- E-** Contains a unique set of graphical information on a dashboard

Answer:

B, D

To Get Premium Files for 1Z0-521 Visit

<https://www.p2pexams.com/products/1z0-521>

For More Free Questions Visit

<https://www.p2pexams.com/oracle/pdf/1z0-521>

