

# **Free Questions for UiPath-ASAPv1**

**Shared by Mooney on 04-10-2024**

**For More Free Questions and Preparation Resources**

**Check the Links on Last Page**

# Question 1

---

**Question Type:** MultipleChoice

---

What is the scope of the Decision Pipeline step within the Automation Pipeline (in UiPath Automation Hub)?

## Options:

---

- A- Check ideas and automation drafts you have saved but not shared yet.
- B- Make good decisions about which ideas go to implementation.
- C- Review automations in the Business Review and Technical Review phases.
- D- Reflect on the overall score indicating how good a candidate's idea is for automation.

## Answer:

---

B

## Explanation:

---

UiPath Automation Hub documentation discusses the various stages of the automation lifecycle, including the Decision Pipeline step. This step is crucial for evaluating and deciding which automation ideas will proceed to the implementation phase based on their potential impact, feasibility, and alignment with business goals. This ensures that resources are allocated to the most valuable and viable

automation projects. (Source: <https://docs.uipath.com/automation-hub/docs/idea-lifecycle>)

## Question 2

---

**Question Type:** MultipleChoice

---

In machine learning, what is the process of allowing a model to adjust its parameters based on data to improve its performance?

### Options:

---

- A- Model training.
- B- Feature engineering.
- C- Hyperparameter tuning.
- D- Model deployment.

### Answer:

---

A

## Explanation:

---

In the context of machine learning, as described in UiPath's AI Fabric documentation, model training is the process where a machine learning model learns from the data provided to it, allowing it to adjust its parameters to improve its performance in making predictions or decisions based on new data. This is a fundamental step in developing AI capabilities within UiPath solutions. (Source: <https://docs.uipath.com/ai-fabric/docs/about-ai-fabric>)

## Question 3

---

### Question Type: MultipleChoice

---

A Solution Architect created the following estimation for a low-complexity process:

1 Sub-Process 3 Components Estimation (days)Q Notes

Dispatcher Config file configuration 0.25

System 1

Login/Logout 0.25

Navigate to CO report 0.125

Extract Data 0.25

Orchestrator

Configure assets/queue 0.125

Upload queue items 0.125

Performer Config file configuration 0.125

System 1

Login/Logout 0.25

Navigate to CO report 0.125

Search Person by ID 0.125

Person Details - Extract data 0.125

Current Performance Details + Extract data 0.5

Check Level Info 0.1

System2

Create Confirmation file 0.1

ReadMNOPfile 0.1

System?

Create Confirmation file 0.1

Read MNOPfile 0.1

Convert MNOPfile data into structured Data 0.5

Compare data between files 0.5

System 1

Navigate to CO report 0.125

Search Person by ID 0.125

Update Date & Save 0.125

Navigate back to search 0.125

Dispatcher/Performer Integration, functional testing 2

Dispatcher/Performer General best practices 2

Total Estimation All + Contingency (30%) 11.0

Based on the Best Practices a Solution Architect should follow when creating an estimation and having the Solution Design in mind, what is one significant mistake that the Solution Architect made?

### Options:

---

- A- The Solution Architect included too many details related to the sub-processes.
- B- The Solution Architect did not split the process accurately between the Dispatcher and the Performer.
- C- The Solution Architect could have added a smaller Contingency time.
- D- The Solution Architect did not take into account the reusability of the components.

### Answer:

---

B

### Explanation:

---

In UiPath's documentation regarding the Dispatcher and Performer model, it is emphasized that the Dispatcher is responsible for adding items to the queue, while the Performer processes these items. An accurate split between Dispatcher and Performer tasks is crucial for efficient process design. The given estimation table should clearly distinguish tasks that add items to the queue (Dispatcher) from those that process items from the queue (Performer). Mixing or inaccurately assigning these tasks can lead to inefficiencies and confusion in process execution. (Source: <https://docs.uipath.com/orchestrator/docs/about-queues-and-transactions>)

## Question 4

---

Question Type: MultipleChoice

---

What is the advantage of having a clear separation between the logic layer and the application layer for UiPath Solution Accelerators?

**Options:**

---

- A-** It improves maintainability and reusability, making it easier to work with specialized libraries for each application.
- B-** It encourages the mixing of logic and application layers for seamless automation flow.
- C-** It reduces the number of workflows, reusable components, and libraries, simplifying the overall code structure.
- D-** It eliminates the need for modular processes, fostering a single-process approach.

**Answer:**

---

A

**Explanation:**

---

The UiPath documentation on the ReFramework (Robotic Enterprise Framework) outlines best practices for developing robust, scalable, and maintainable automations. A key principle is the separation of concerns, which is implemented by distinguishing between the logic layer (business rules) and the application layer (interaction with applications). This separation enhances maintainability by allowing changes in business logic or application interfaces to be made independently, thereby also improving reusability of components. (Source: <https://docs.uipath.com/developer/docs/about-the-reframework>)



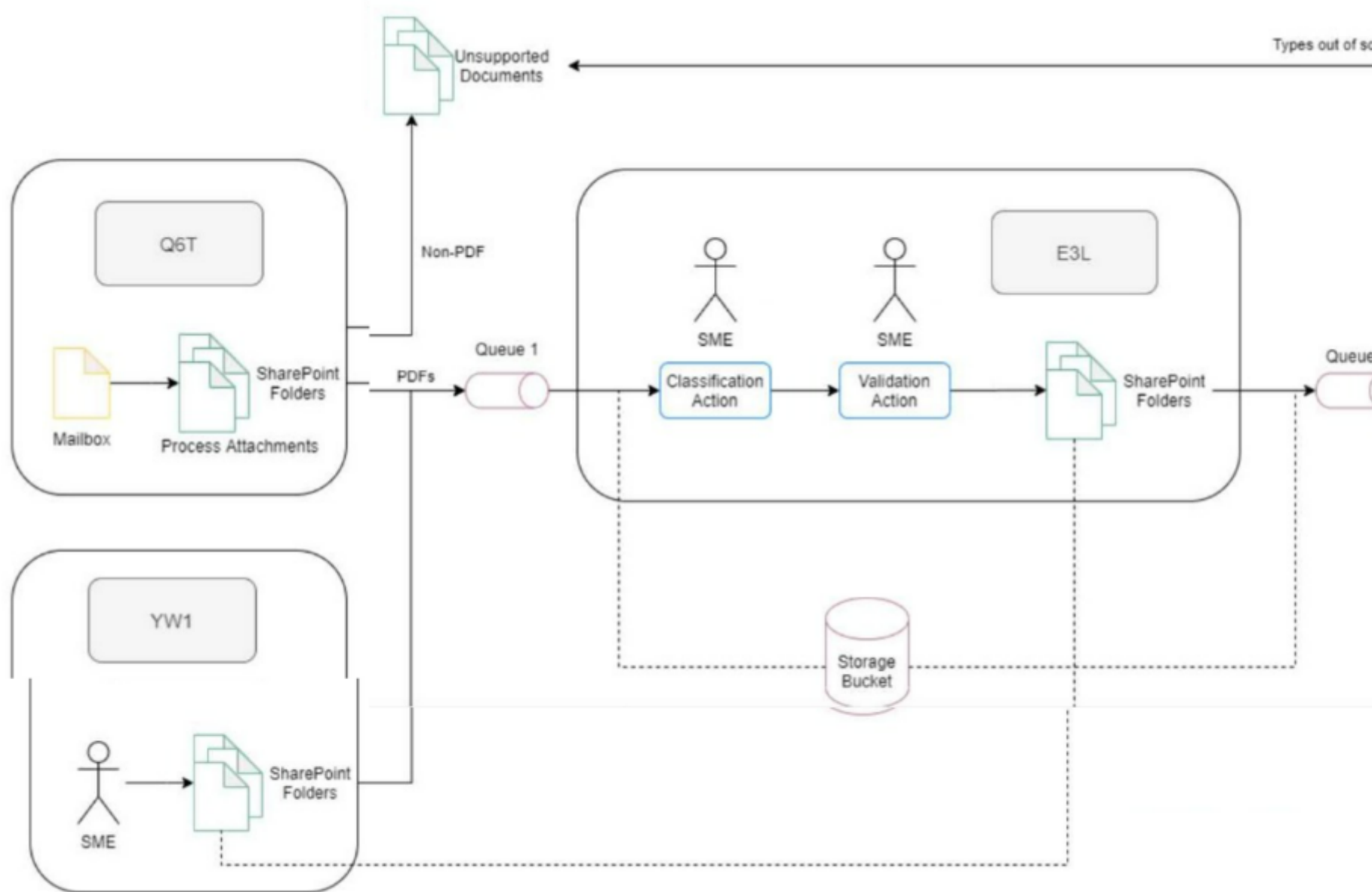
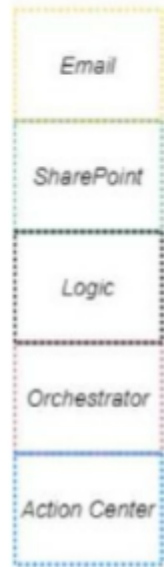
## Question 5

---

**Question Type:** MultipleChoice

---

What is the use case of the following diagram?



**Options:**

---

- A- Credit Note Processing
- B- Invoice Processing
- C- Natural Language Processing
- D- Human Action Processing

**Answer:**

---

B

**Explanation:**

---

The use case of the diagram is Invoice Processing. The diagram represents a typical workflow in a document processing scenario using UiPath RPA tools. It shows the process starting from document collection from emails and SharePoint folders, processing attachments, classifying documents, and handling exceptions until the final step of invoice type classification.

The workflow involves various components of UiPath such as queues in Orchestrator for managing work items, actions by Subject Matter Experts (SMEs) for validation, and use of the Storage Buckets for storing information. It also shows the handling of different document types and exceptions, which is typical in invoice processing scenarios where not all documents are standardized and may require human intervention.

## Question 6

---

**Question Type: MultipleChoice**

---

Which UiPath Studio main entry file and project settings are correct for implementing the following high-level solution diagram?

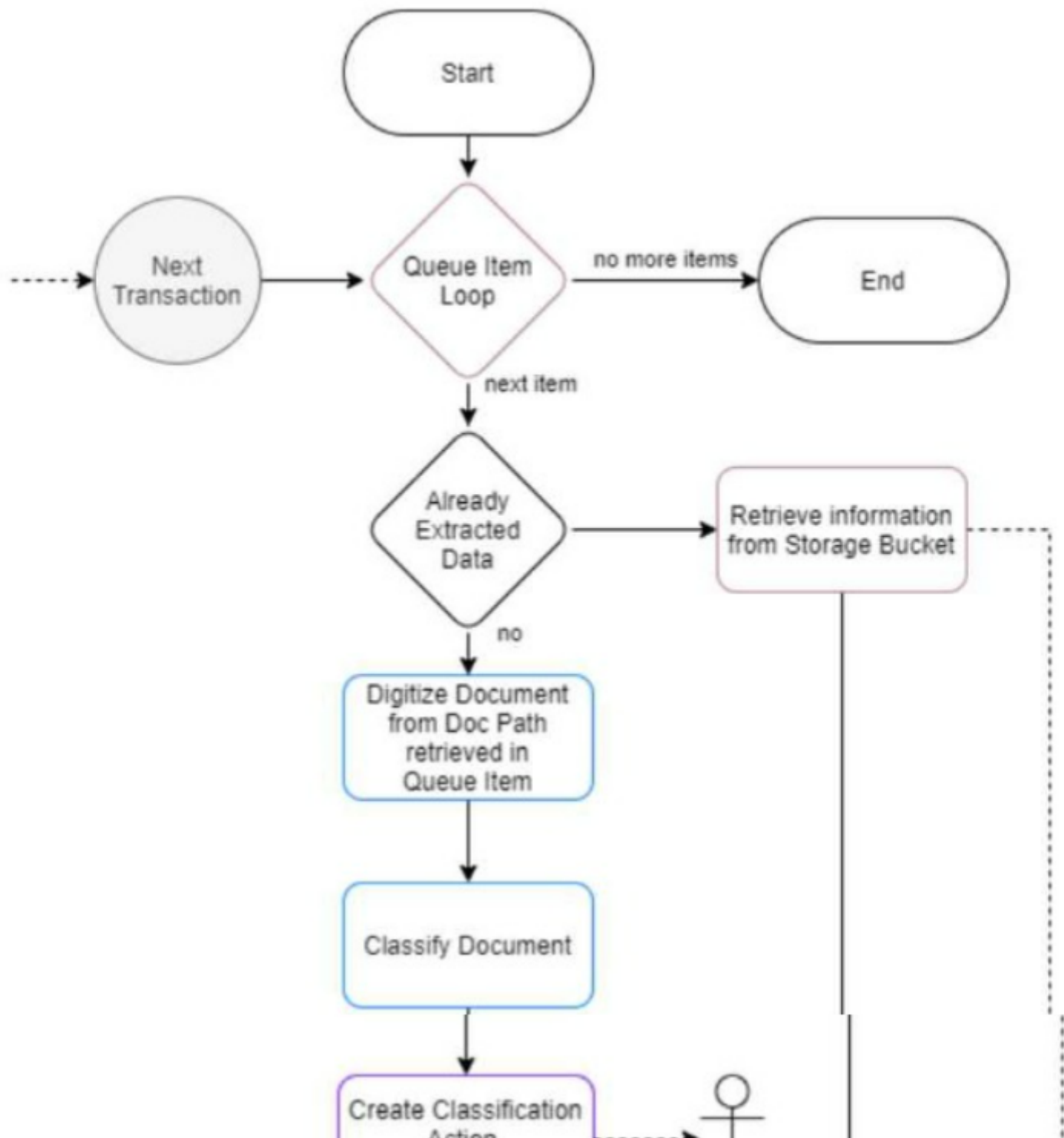
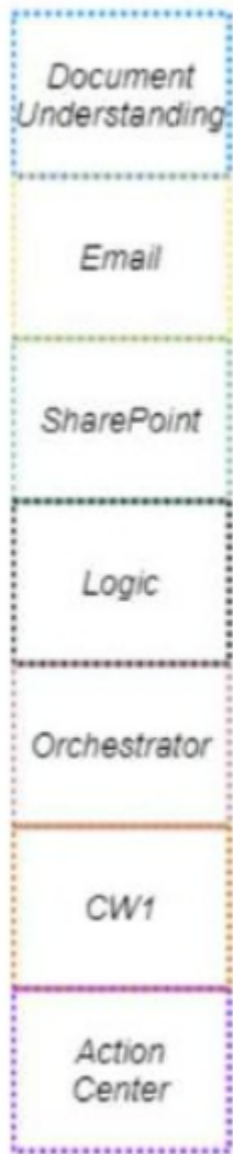


Exhibit A

Project



Search project (Ctrl+Alt+P)

- Exam
  - Dependencies (Windows)
  - Entities
  - Templates
  - .project
  - .settings
  - .tmh
  - Data
  - DocumentProcessing
  - Framework
  - UserGuide
  - LICENSE
  - Main-ActionCenter.xaml
  - Main-Attended.xaml**
  - project.json

Activities Settings

- UI Automation Modern
- OCR
- UI Automation Classic
- System
- Computer Vision
- Excel Modern

Name \*

Exam

Description

Project tags ?

Start typing to get a list of p

Automation Hub URL

Insert URL to link to an Auto

Package Icon ?



Optional Package Icon

Disable Pause ?

Attended Automation ?

Starts in Background ?

Supports Persistence ?

Exhibit B



Project

Search project (Ctrl+Alt+P)

- Exam
  - Dependencies (Windows)
  - Entities
  - Templates
  - .project
  - .settings
  - .tmh
  - Data
  - DocumentProcessing
  - Framework
  - UserGuide
  - LICENSE
  - Main-ActionCenter.xaml**
  - Main-Attended.xaml

Activities Settings

- UI Automation Modern
- OCR
- UI Automation Classic
- System
- Computer Vision
- Excel Modern

Name \*

Exam

Description

Project tags ?

Automation Hub URL ?

Package Icon ?

Disable Pause ?

Attended Automation ?

Starts in Background ?

Exhibit C

Project



Search project (Ctrl+Alt+P)

Exam

Dependencies (Windows)

Entities

Templates

.project

.settings

.tmh

Data

DocumentProcessing

Framework

UserGuide

LICENSE

Main-ActionCenter.xaml

**Main-Attended.xaml**

project icon

Activities Settings

UI Automation Modern

OCR

UI Automation Classic

System

Computer Vision

Excel Modern

Name \*

Exam

Description

Project tags ?

Start typing to get a list of

Automation Hub URL

Insert URL to link to an A

Package Icon ?



Optional Package Icon

Disable Pause ?

Attended Automation ?

Starts in Background ?

Supports Persistence ?

Exhibit D

Project



Search project (Ctrl+Alt+P)

- Exam
  - Dependencies (Windows)
  - Entities
  - Templates
  - .project
  - .settings
  - .tmh
  - Data
  - DocumentProcessing
  - Framework
  - UserGuide
  - LICENSE
  - Main-ActionCenter.xaml**
  - Main-Attended.xaml
  - project.json

Activities Settings

- UI Automation Modern
- OCR
- UI Automation Classic
- System
- Computer Vision
- Excel Modern

Name \*

Exam

Description

Project tags ?

Start typing to get a list of poss

Automation Hub URL

Insert URL to link to an Autom

Package Icon ?



Optional Package Icon

Disable Pause ?

Attended Automation ?

Starts in Background ?

Supports Persistence ?

**Options:**

---

A- Exhibit A

B- Exhibit B

C- Exhibit C

D- Exhibit D

**Answer:**

---

C

## Question 7

---

**Question Type: DragDrop**

---

Arrange the flow steps in UiPath Test Manager before deployment in the right order.

Instructions: Drag the Description found on the left and drop on the correct Step Sequence found on the right.



**Answer:**

---

## Question 8

---

**Question Type: MultipleChoice**

---

Which of the following feeds can be used to deploy a package? Select the option that members all that apply:

**Options:**

---

- A-** Tenant feed, External feed, Custom feed.
- B-** Tenant feed, External feed.
- C-** Tenant feed, Folder feed, Personal workspace feed. Custom feed.
- D-** Tenant feed, custom feed

**Answer:**

---

C



## **Explanation:**

---

According to the UiPath documentation and the UiPath Academy course, there are four types of feeds that can be used to deploy a package in Orchestrator:

**Tenant feed:** This is the default feed for all tenants in Orchestrator. It is hosted on the Orchestrator server and can store both processes and libraries. It can be accessed by all users within the tenant<sup>12</sup>.

**Folder feed:** This is a feed that can be configured for a specific folder in Orchestrator. It can store only processes and can be accessed only by users within the folder. It can be useful for isolating packages for different environments or projects<sup>13</sup>.

**Personal workspace feed:** This is a feed that can be configured for a personal workspace in Orchestrator. It can store only processes and can be accessed only by the user who owns the workspace. It can be useful for testing and debugging packages before publishing them to other feeds<sup>14</sup>.

**Custom feed:** This is a feed that can be configured by adding an external source, such as Azure DevOps, Artifactory, MyGet, etc. It can store both processes and libraries and can be accessed by users who have the credentials for the external source. It can be useful for integrating with third-party tools or services<sup>1</sup>.

[Automation Ops - Orchestrator Feeds - UiPath Documentation Portal](#)<sup>1</sup>

[Queues and Transactions - UiPath Documentation Portal](#)<sup>2</sup>

[Folders - UiPath Documentation Portal](#)<sup>3</sup>

[Personal Workspaces - UiPath Documentation Portal4](#)

[External Feed For Packages - UiPath Community Forum](#)

## Question 9

---

**Question Type:** MultipleChoice

---

In which model is the Admin Portal and Analyzer used with UiPath unassisted Task Mining delivered, and where is it built and hosted?

### Options:

---

- A- Oracle Cloud infrastructure
- B- Microsoft Azure
- C- Google Cloud
- D- Amazon Web Services

### Answer:

---

B

## Explanation:

---

UiPath Unassisted Task Mining is a cloud-based service that collects and analyzes employee desktop data to identify tasks with high automation potential. The Admin Portal and Analyzer are web applications that are used to manage and review the Unassisted Task Mining projects. They are delivered as part of the UiPath Automation Cloud, which is built and hosted on Microsoft Azure. Microsoft Azure is a cloud computing platform that provides various services and solutions for building, deploying, and managing applications and data. UiPath Automation Cloud leverages Microsoft Azure's security, scalability, and reliability features to offer a seamless and secure user experience. (<https://docs.uipath.com/task-mining/automation-cloud/latest/user-guide/unassisted-task-mining-introduction>)

[Unassisted Task Mining - Introduction - UiPath Documentation Portal](#)

[UiPath Automation Cloud - Introduction - UiPath Documentation Portal](#)

[Microsoft Azure - Overview](#)

## Question 10

---

**Question Type:** MultipleChoice

---

What is the definition of Artificial intelligence?

## Options:

---

- A-** Artificial intelligence is an area of machine learning concerned with artificial neural networks. These are a series of algorithms that aim to recognize relationships in a set of data through a process that mimics biological neural networks.
- B-** Artificial intelligence is the theory and development of computer system that are able to perform tasks that normally require human intelligence and decision making.
- C-** Artificial intelligence is a field of computer science that focuses on enabling computers to identify and understand objects and people in images and videos. It can be seen as the eyes that enable the computer to observe and understand
- D-** Artificial intelligence is a machine learning technology that gives computer the ability to interpret, manipulate, and comprehend human language.

## Answer:

---

B

## Explanation:

---

Artificial intelligence (AI) is a broad term that covers various technologies that enable machines to perform tasks that traditionally require human intelligence, such as reasoning, learning, problem-solving, and using language. AI can be classified into different types, such as weak AI, strong AI, and artificial general intelligence (AGI), depending on the level of intelligence and the scope of tasks that the machines can perform<sup>2</sup>. Some of the common applications of AI include natural language processing, computer vision, speech recognition, machine learning, and deep learning<sup>3</sup>.

[1: Artificial intelligence \(AI\) | Definition, Examples, Types, Applications, Companies, & Facts | Britannica](#)

[2: What Is Artificial Intelligence? Definition, Uses, and Types | Coursera](#)

[3: What is Artificial Intelligence \(AI\) ? | IBM](#)

## Question 11

---

**Question Type:** MultipleChoice

---

What are long-running workflows?

### Options:

---

- A-** Processes are designed to run continuously for an extended period of time.
- B-** Workflow intended to be used only by attended robots.
- C-** Master projects that supports orchestration and human intervention.
- D-** Workflow for which one can set a Stop Time

### Answer:

---

C

### **Explanation:**

---

This answer is correct because long-running workflows are processes that require logical fragmentation or human intervention (validations, approvals, exception handling) such as invoice processing and performance reviews. They are handled with a set of instruments in the UiPath suite: a dedicated project template in Studio called Orchestration Process, actions and resource allocation capabilities in Orchestrator. Long-running workflows use a pair of activities to introduce a condition that suspends the main job until the condition is met, and then resumes the job with the obtained data. The condition can be a job, a queue item, a form action, or an external action<sup>12</sup>

[Orchestrator - Working With Long-running Workflows](#)

[Designing long-running workflows - UiPath Documentation Portal](#)

## **Question 12**

---

**Question Type:** MultipleChoice

---

Consider the following estimation. What criteria from the below is not taken into account?

Sub-processes	Components	Estimation (hours)
<b>Dispatcher</b>	<b>ACME</b>	
	Login, logout	2
	Navigate inside ACME website	2
	Extract WI4 items	2
	Add to queue	0.25
<b>Performer</b>	<b>ACME</b>	
	Login, logout	reuse
	Navigate inside ACME website	4
	Get vendor details for a WI4 item	2
	Download monthly reports for a specific WI4	5
	Upload report for a specific WI4	2
	Update status for a WI4 item	2
	<b>Excel</b>	
	Merge reports	4
<b>Dispatcher / Performer</b>	<b>Integration, functional tests</b>	6
Total Estimation	All + Contingency (30%)	40.625
Total Estimation (days)		5

### Options:

- 
- A-** Number of clicks in the application(s).
  - B-** Integration with ACME System 1 App tested successfully.
  - C-** Number of sub-processes:2 (Dispatcher and performer).
  - D-** Number of applications used: 2 (ACME System 1, Excel).

**Answer:**

---

A

**Explanation:**

---

The estimation table in the image shows the breakdown of hours required for different sub-processes and components in a UiPath automation project. The criteria that are taken into account are the number of sub-processes, the number of applications used, the integration and functional tests, and the contingency. The number of clicks in the application(s) is not a relevant criterion for the estimation, as it does not reflect the complexity or the effort of the automation. Moreover, the number of clicks may vary depending on the selectors, the UI elements, and the data inputs.

[UiPath Automation Solution Architect Course, Module 3: Estimation and Planning](#)

[Roles of a Solution Architect in Automation, RPA Setting, section: The importance of solution architecture](#)



**To Get Premium Files for UiPath-ASAPv1 Visit**

**<https://www.p2pexams.com/products/uipath-asapv1>**

**For More Free Questions Visit**

**<https://www.p2pexams.com/uipath/pdf/uipath-asapv1>**

